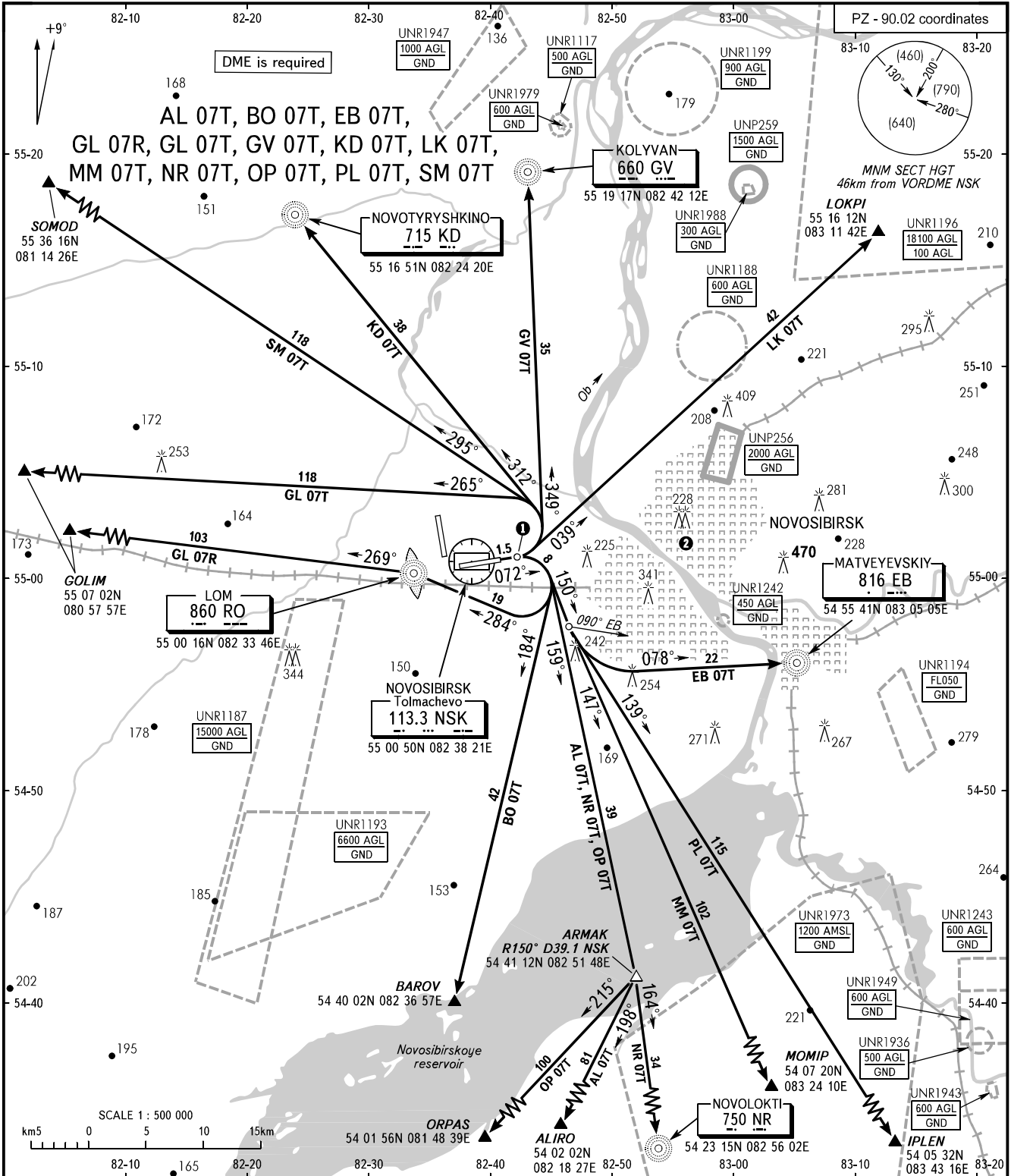


STANDARD DEPARTURE CHART
INSTRUMENT (SID) - ICAO

TRANSITION
HEIGHT : (1300)

NOVOSIBIRSK, RUSSIA
TOLMACHEVO
RWY 07



TOWER	118.500
RADAR	122.000
APPROACH FL060-190	127.500
FL060-070 (by ATC)	127.100

- ① Initial turn shall be executed at D4.0 NSK. When necessary, flaps and gear retraction shall be made after or in the process of turn.
- ② Flights of civil ACFT over the central part of the city below (1200) are PROHIBITED.

WARNING

Take-off shall be carried out using noise abatement procedure for the area according to the Aeroplane Flight Manual.

BEARINGS AND TRACKS ARE MAGNETIC
ALTITUDES, HEIGHTS AND ELEVATIONS ARE IN METRES
DISTANCES ARE IN KILOMETRES

CHANGE: LOM