

AERODROME
CHART - ICAO

ARP
55°02'00"N
082°35'57"E

ELEV
112m

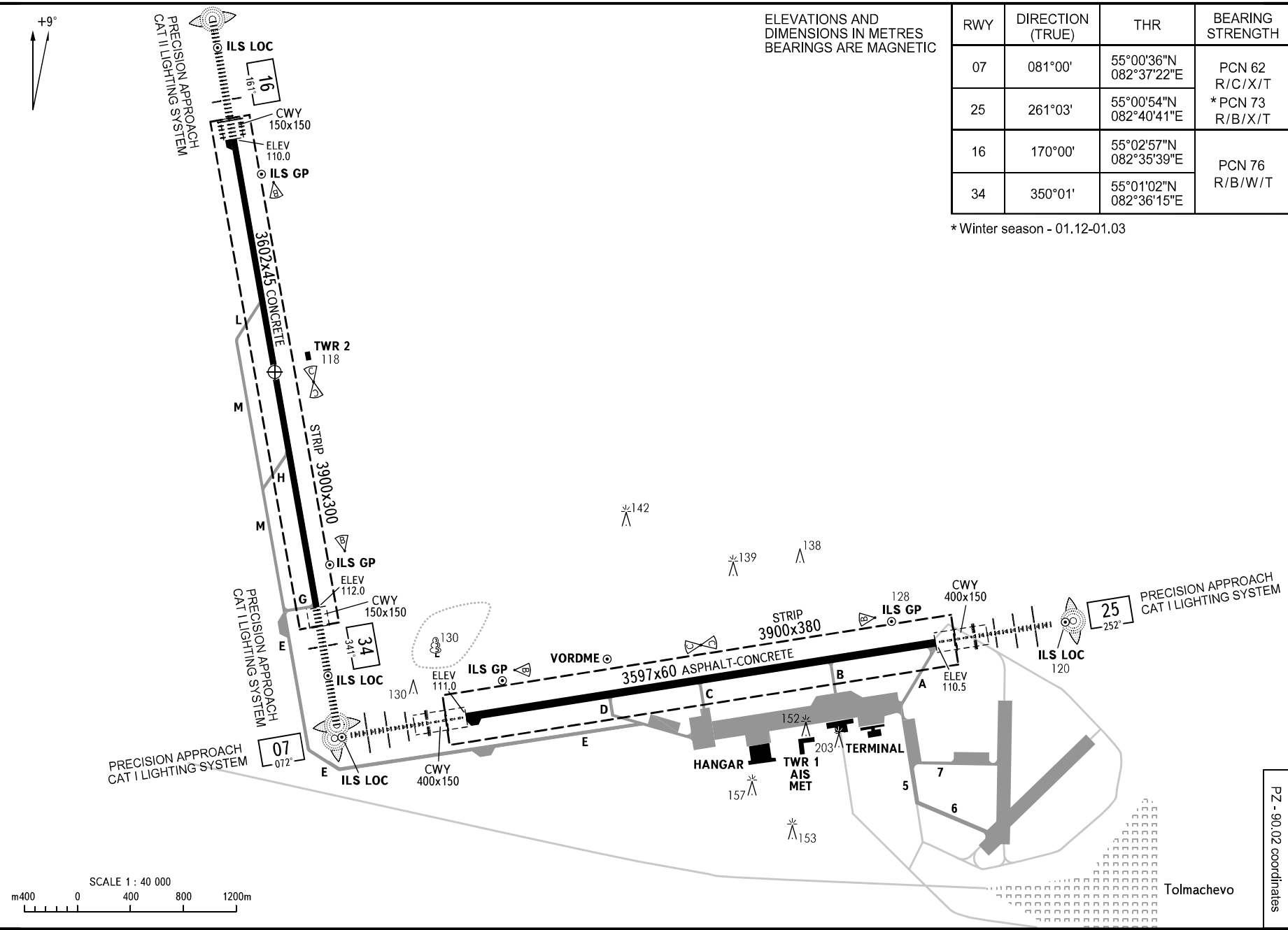
TOWER (RWY 07/25)
GROUND (RWY 16/34)
118,500
126,700
121,700

NOVOSIBIRSK, RUSSIA
TOLMACHEVO

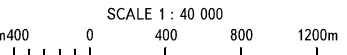
PZ - 90.02 coordinates

RWY	DIRECTION (TRUE)	THR	BEARING STRENGTH
07	081°00'	55°00'36"N 082°37'22"E	PCN 62 R/C/X/T
25	261°03'	55°00'54"N 082°40'41"E	* PCN 73 R/B/X/T
16	170°00'	55°02'57"N 082°35'39"E	PCN 76 R/B/W/T
34	350°01'	55°01'02"N 082°36'15"E	

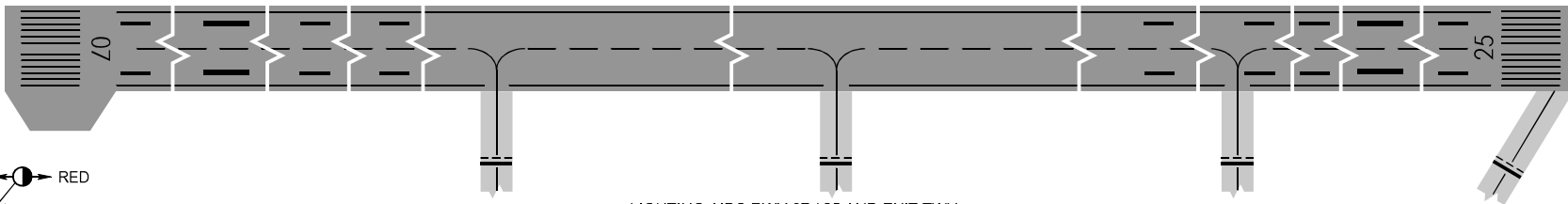
* Winter season - 01.12-01.03



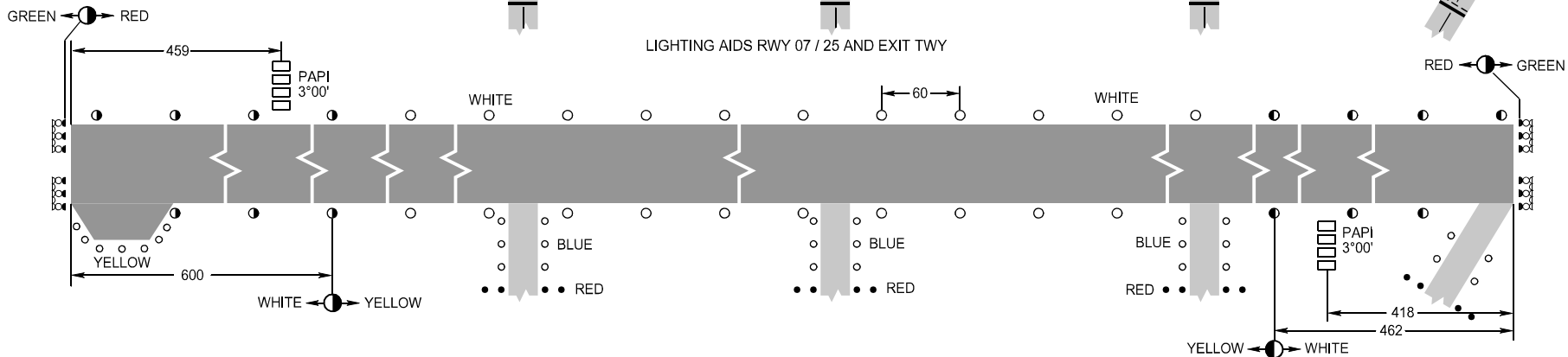
ELEVATIONS AND DIMENSIONS IN METRES
BEARINGS ARE MAGNETIC



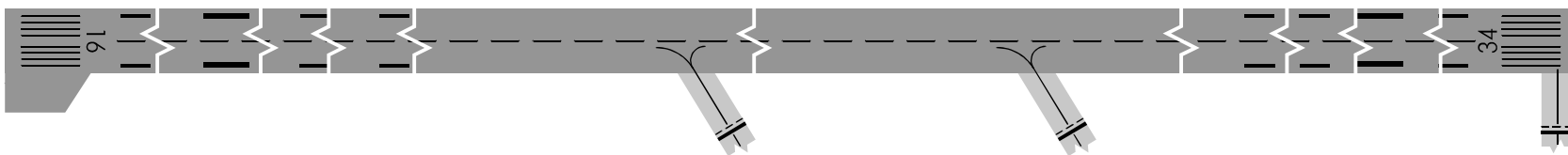
MARKING AIDS RWY 07 / 25 AND EXIT TWY



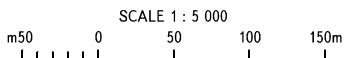
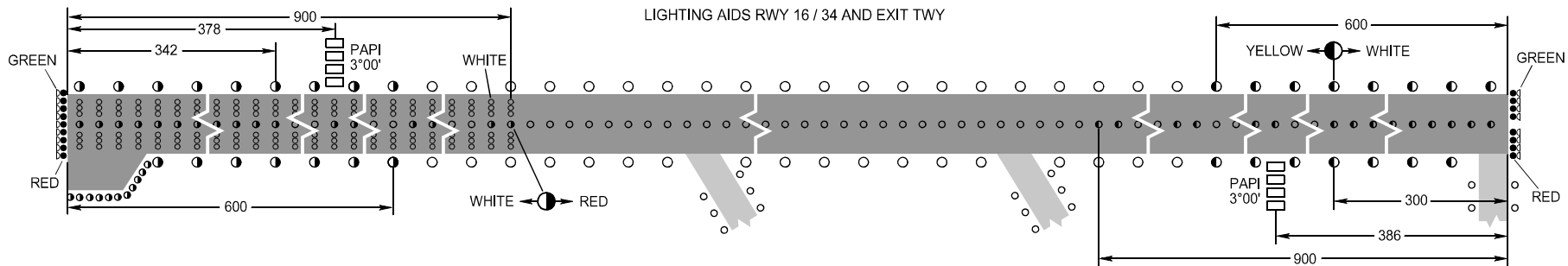
LIGHTING AIDS RWY 07 / 25 AND EXIT TWY



MARKING AIDS RWY 16 / 34 AND EXIT TWY



LIGHTING AIDS RWY 16 / 34 AND EXIT TWY



DIMENSIONS IN METRES

WARNING
During RWY 16/34 APCH the use of PAPI is prohibited for B747 ACFT.