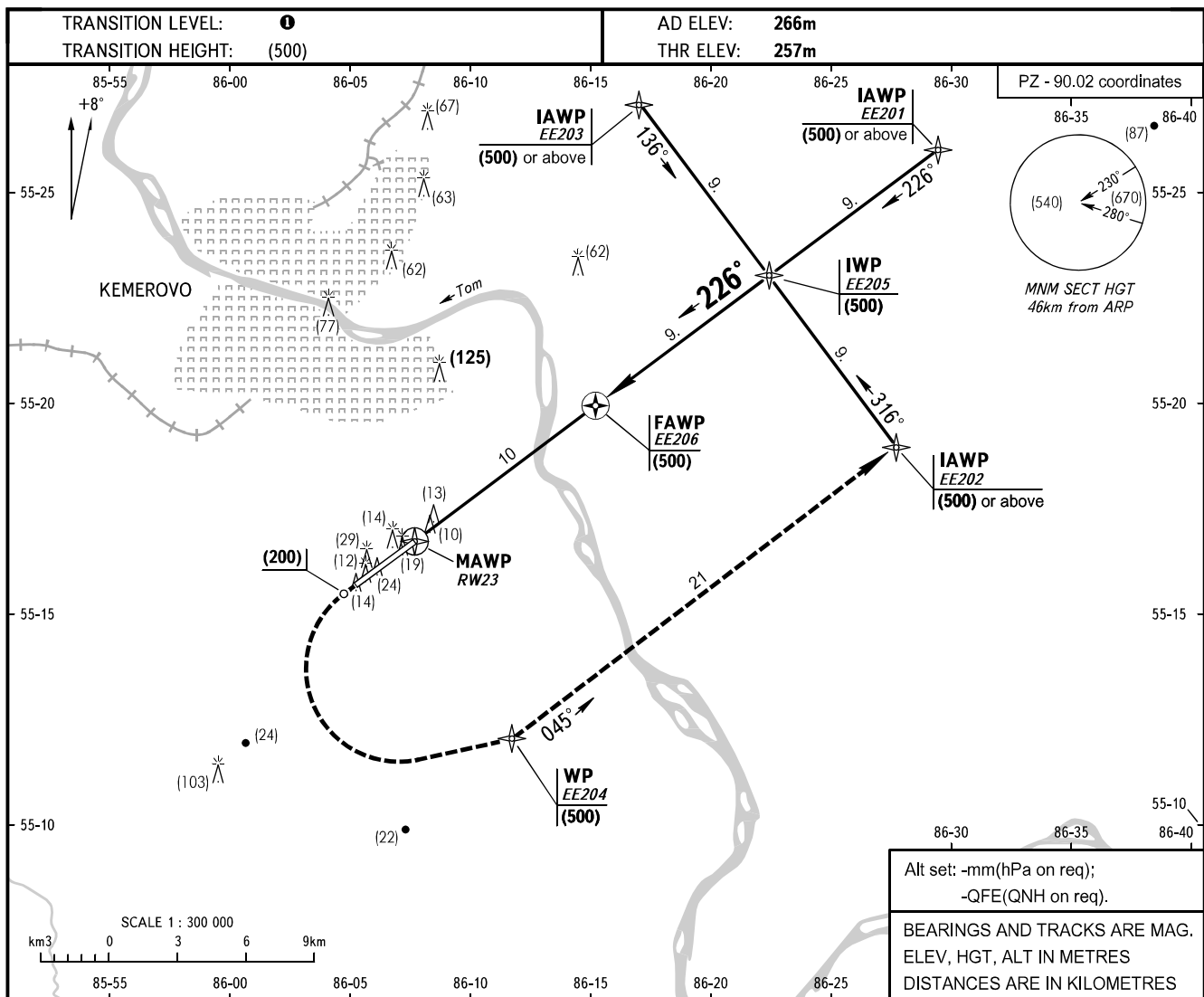


**INSTRUMENT
APPROACH
CHART - ICAO**

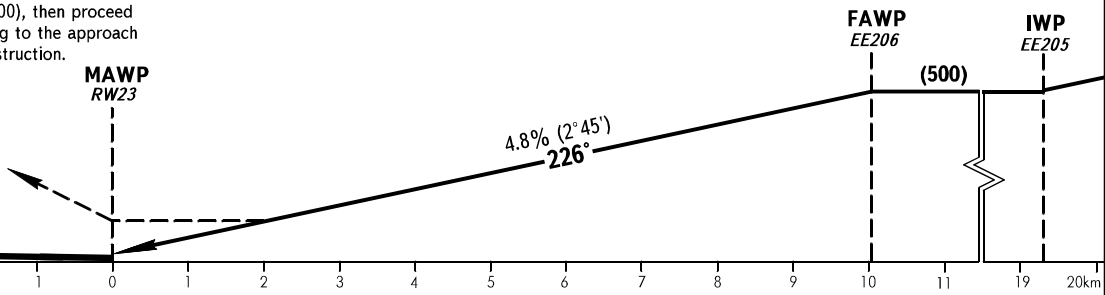
APPROACH START	125.500
START	118.300

KEMEROVO, RUSSIA
KEMEROVO
RNAV (GNSS) RWY 23



MISSED APPROACH

Climb straight ahead to (200), turn LEFT to EE204 climbing to (500), then proceed to EE202, then according to the approach chart or by ATS unit instruction.



OCA/H		A	B	C	D
Straight-in	GNSS	366(109)	366(109)	366(109)	366(109)
	Approach				

WARNING
Ground Proximity Warning System is subject to functioning.
① **TRANSITION LEVEL:**
- FL030 when atmospheric pressure is 760mm mercury column or above;
- FL040 when atmospheric pressure is 759-733mm mercury column;
- FL050 when atmospheric pressure is 732mm mercury column or less.

GROUND SPEED	km/h	150	180	210	240	270	300	330	360	390	420	450
RATE OF DESCENT	m/s	2.0	2.4	2.8	3.2	3.6	4.0	4.4	4.8	5.2	5.6	6.0