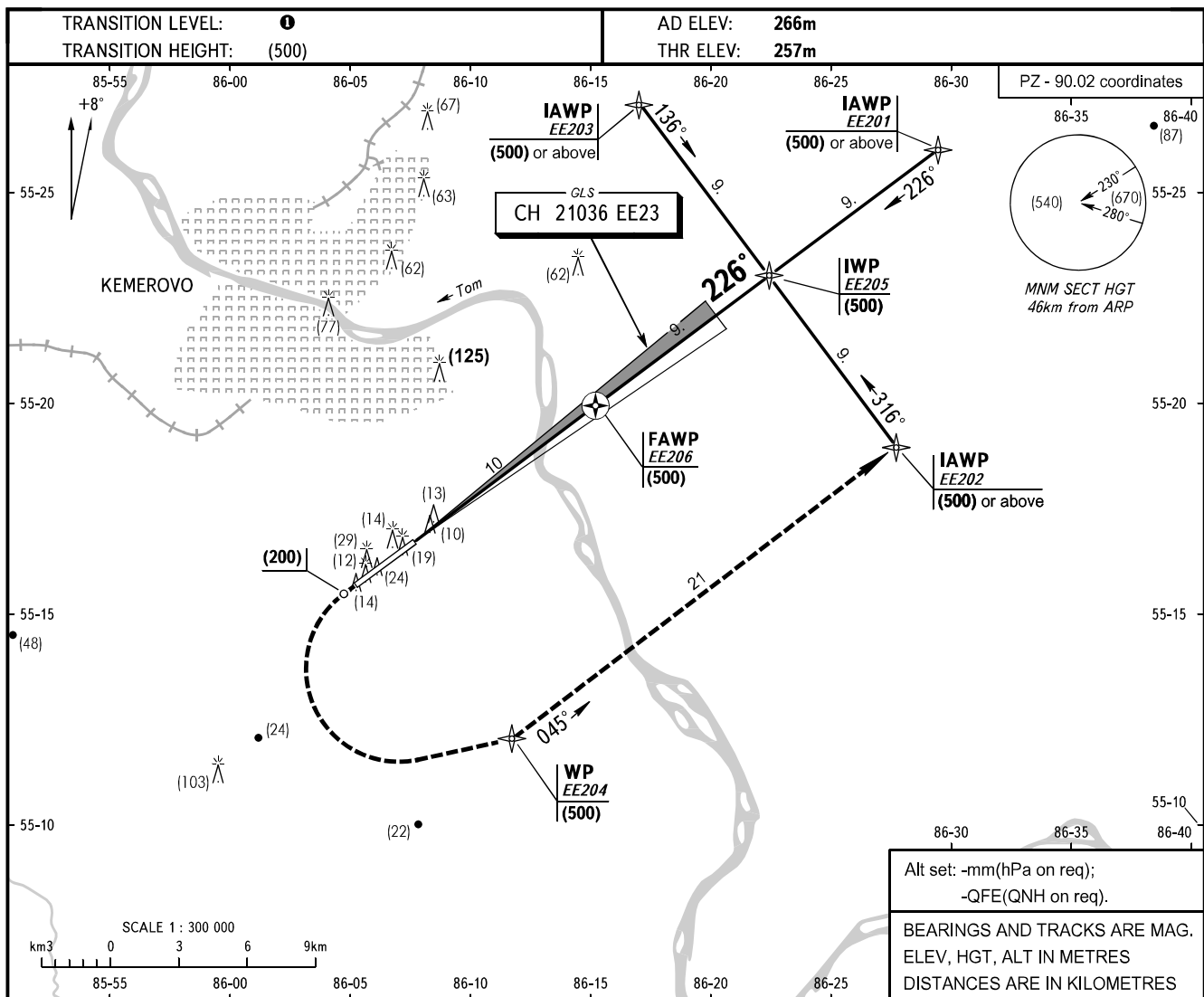


**INSTRUMENT  
APPROACH  
CHART - ICAO**

APPROACH	<b>125.500</b>
START	<b>118.300</b>

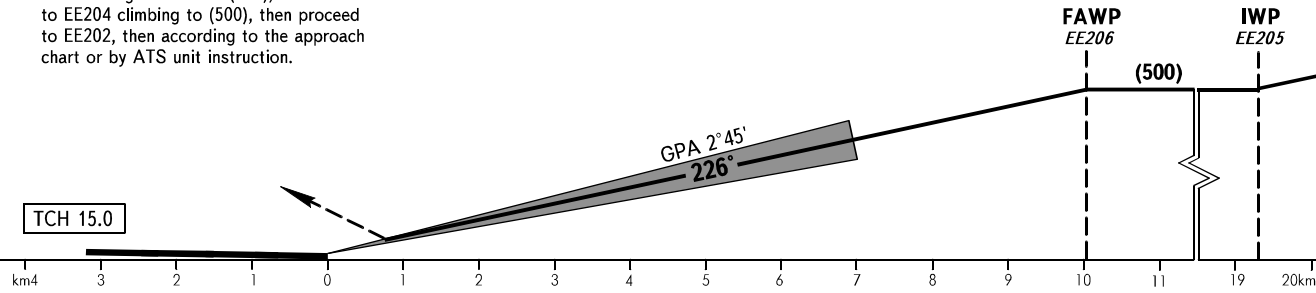
**KEMEROVO, RUSSIA**  
KEMEROVO  
RNAV (GLS) RWY 23



Alt set: -mm(hPa on req);  
-QFE(QNH on req).  
BEARINGS AND TRACKS ARE MAG.  
ELEV, HGT, ALT IN METRES  
DISTANCES ARE IN KILOMETRES

**MISSED APPROACH**

Climb straight ahead to (200), turn LEFT to EE204 climbing to (500), then proceed to EE202, then according to the approach chart or by ATS unit instruction.



OCA/H		A	B	C	D
Straight-in	GLS	324(67)	327(70)	330(73)	333(76)
	Approach				

**WARNING**  
Ground Proximity Warning System is subject to functioning.  
① **TRANSITION LEVEL:**  
- FL030 when atmospheric pressure is 760mm mercury column or above;  
- FL040 when atmospheric pressure is 759-733mm mercury column;  
- FL050 when atmospheric pressure is 732mm mercury column or less.

GROUND SPEED	km/h	150	180	210	240	270	300	330	360	390	420	450
RATE OF DESCENT	m/s	2.0	2.4	2.8	3.2	3.6	4.0	4.4	4.8	5.2	5.6	6.0