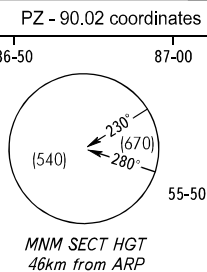


STANDARD ARRIVAL CHART
INSTRUMENT (STAR) - ICAO

KEMEROVO, RUSSIA
KEMEROVO
RNAV (GNSS) RWY 23

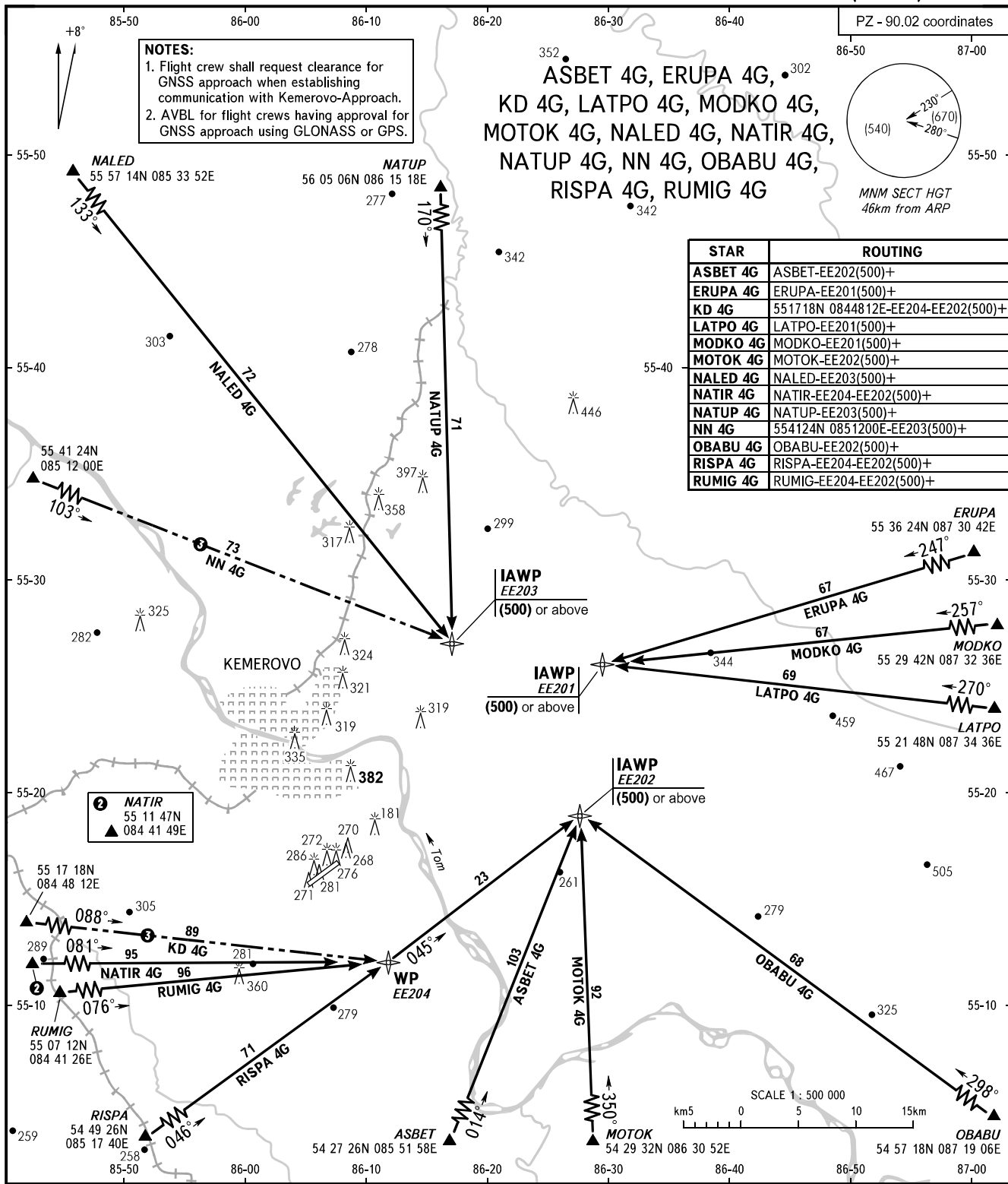
TRANSITION
LEVEL : 1

NOTES:
1. Flight crew shall request clearance for GNSS approach when establishing communication with Kemerovo-Approach.
2. AVBL for flight crews having approval for GNSS approach using GLONASS or GPS.



ASBET 4G, ERUPA 4G, 302
KD 4G, LATPO 4G, MODKO 4G,
MOTOK 4G, NALED 4G, NATIR 4G,
NATUP 4G, NN 4G, OBABU 4G,
RISPA 4G, RUMIG 4G
342

STAR	ROUTING
ASBET 4G	ASBET-EE202(500)+
ERUPA 4G	ERUPA-EE201(500)+
KD 4G	551718N 0844812E-EE204-EE202(500)+
LATPO 4G	LATPO-EE201(500)+
MODKO 4G	MODKO-EE201(500)+
MOTOK 4G	MOTOK-EE202(500)+
NALED 4G	NALED-EE203(500)+
NATIR 4G	NATIR-EE204-EE202(500)+
NATUP 4G	NATUP-EE203(500)+
NN 4G	554124N 0851200E-EE203(500)+
OBABU 4G	OBABU-EE202(500)+
RISPA 4G	RISPA-EE204-EE202(500)+
RUMIG 4G	RUMIG-EE204-EE202(500)+



START 118.300
APPROACH 125.500

1 TRANSITION LEVEL:
- FL030 when atmospheric pressure is 760mm mercury column or above;
- FL040 when atmospheric pressure is 759-733mm mercury column;
- FL050 when atmospheric pressure is 732mm mercury column or less.
2 Only for Russian users of airspace.

BEARINGS AND TRACKS ARE MAGNETIC
ALTITUDES, HEIGHTS AND ELEVATIONS ARE IN METRES
DISTANCES ARE IN KILOMETRES