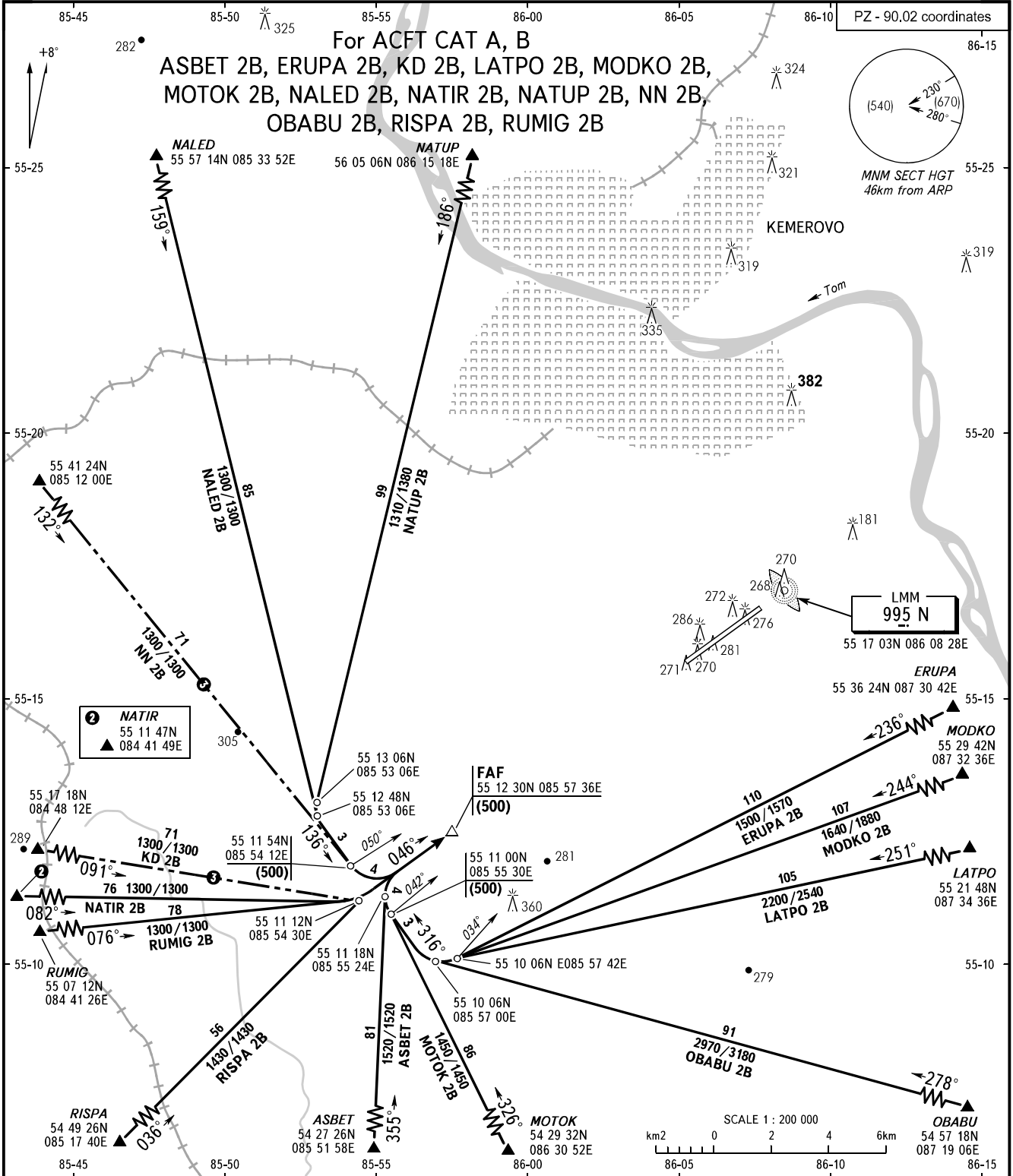


STANDARD ARRIVAL CHART
INSTRUMENT (STAR) - ICAO

KEMEROVO, RUSSIA
KEMEROVO
RWY 05

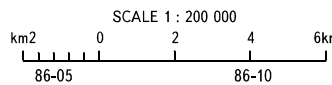
TRANSITION
LEVEL: ①



② NATIR
55 11 47N
▲ 084 41 49E

FAF
55 12 30N 085 57 36E
(500)

LMM
995 N
55 17 03N 086 08 28E



START 118.300
APPROACH 125.500

- ① TRANSITION LEVEL:
- FL030 when atmospheric pressure is 760mm mercury column or above;
 - FL040 when atmospheric pressure is 759-733mm mercury column;
 - FL050 when atmospheric pressure is 732mm mercury column or less.
- ③ Only for Russian users of airspace.

BEARINGS AND TRACKS ARE MAGNETIC
ALTITUDES, HEIGHTS AND ELEVATIONS ARE IN METRES
DISTANCES ARE IN KILOMETRES

CHANGE: BRG