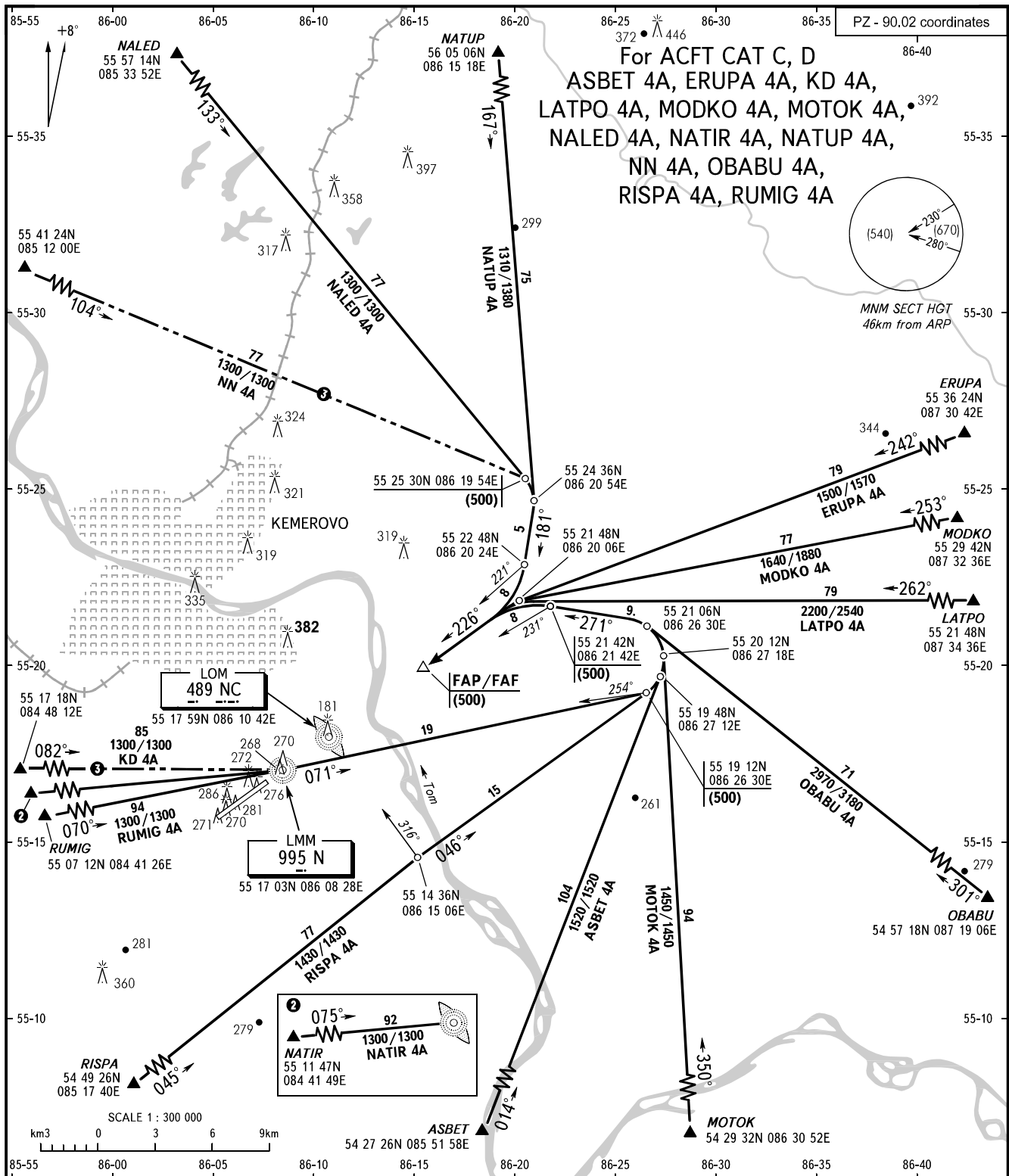


STANDARD ARRIVAL CHART
INSTRUMENT (STAR) - ICAO

TRANSITION
LEVEL : **1**

KEMEROVO, RUSSIA
KEMEROVO
RWY 23



START **118.300**
APPROACH **125.500**

- 1** TRANSITION LEVEL:
- FL030 when atmospheric pressure is 760mm mercury column or above;
- FL040 when atmospheric pressure is 759-733mm mercury column;
- FL050 when atmospheric pressure is 732mm mercury column or less.

2 Only for Russian users of airspace.

BEARINGS AND TRACKS ARE MAGNETIC
ALTITUDES, HEIGHTS AND ELEVATIONS ARE IN METRES
DISTANCES ARE IN KILOMETRES