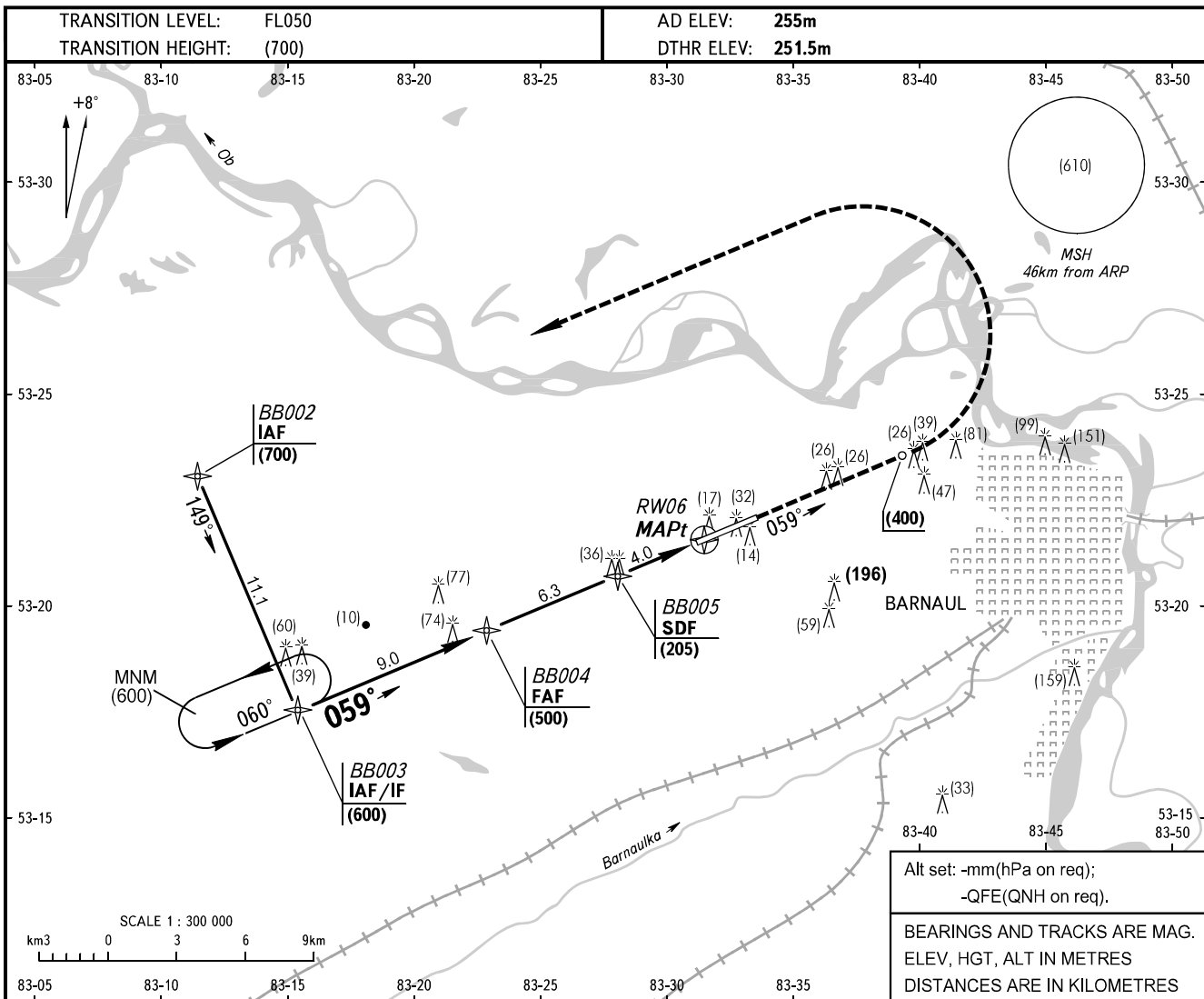


**INSTRUMENT
APPROACH
CHART - ICAO**

TOWER	123.500
-------	---------

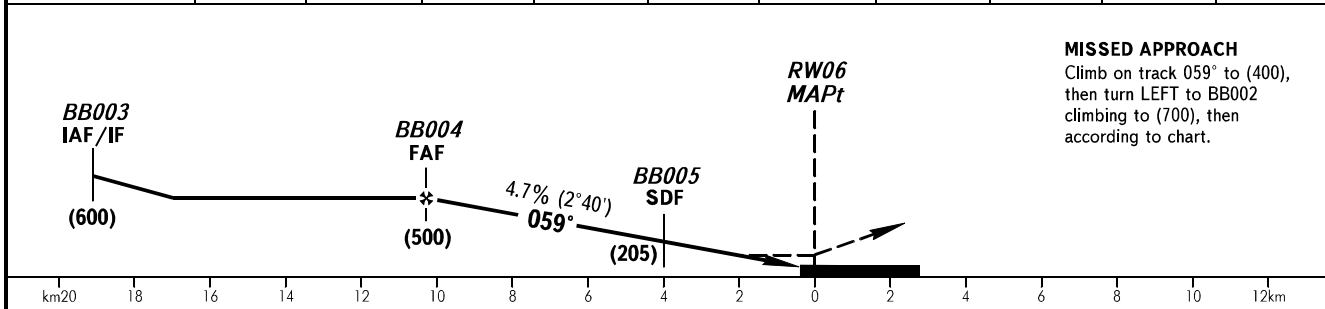
**BARNAUL, RUSSIA
MIKHAYLOVKA
RNAV (GNSS) RWY 06**



Alt set: -mm(hPa on req);
-QFE(QNH on req).

BEARINGS AND TRACKS ARE MAG.
ELEV, HGT, ALT IN METRES
DISTANCES ARE IN KILOMETRES

DISTANCE to RW06	10.0	9.0	8.0	7.0	6.0	5.0	4.0	3.0	2.0	1.0
HGT 2°40' APCH	(485)	(440)	(390)	(345)	(300)	(250)	(205)	(155)	(110)	(65)



MISSED APPROACH
Climb on track 059° to (400),
then turn LEFT to BB002
climbing to (700), then
according to chart.

OCA(H)		A	B	C	D	<p>WARNING The radiuses of visual manoeuvring (circling) area for ACFT categories are as follows: A - 5400m B - 7140m C - 8430m D - 9790m</p>						
Straight-in Approach		355(105)	355(105)	355(105)	355(105)							
Circling		538(286)	538(286)	568(316)	568(316)							
	Visual manoeuvring south of AD is PROHIBITED.											
GROUND SPEED	km/h	150	180	210	240	270	300	330	360	390	420	450
RATE OF DESCENT	m/s	2.0	2.3	2.7	3.1	3.5	3.9	4.3	4.7	5.1	5.4	5.9

CHANGE: BB004, BB005