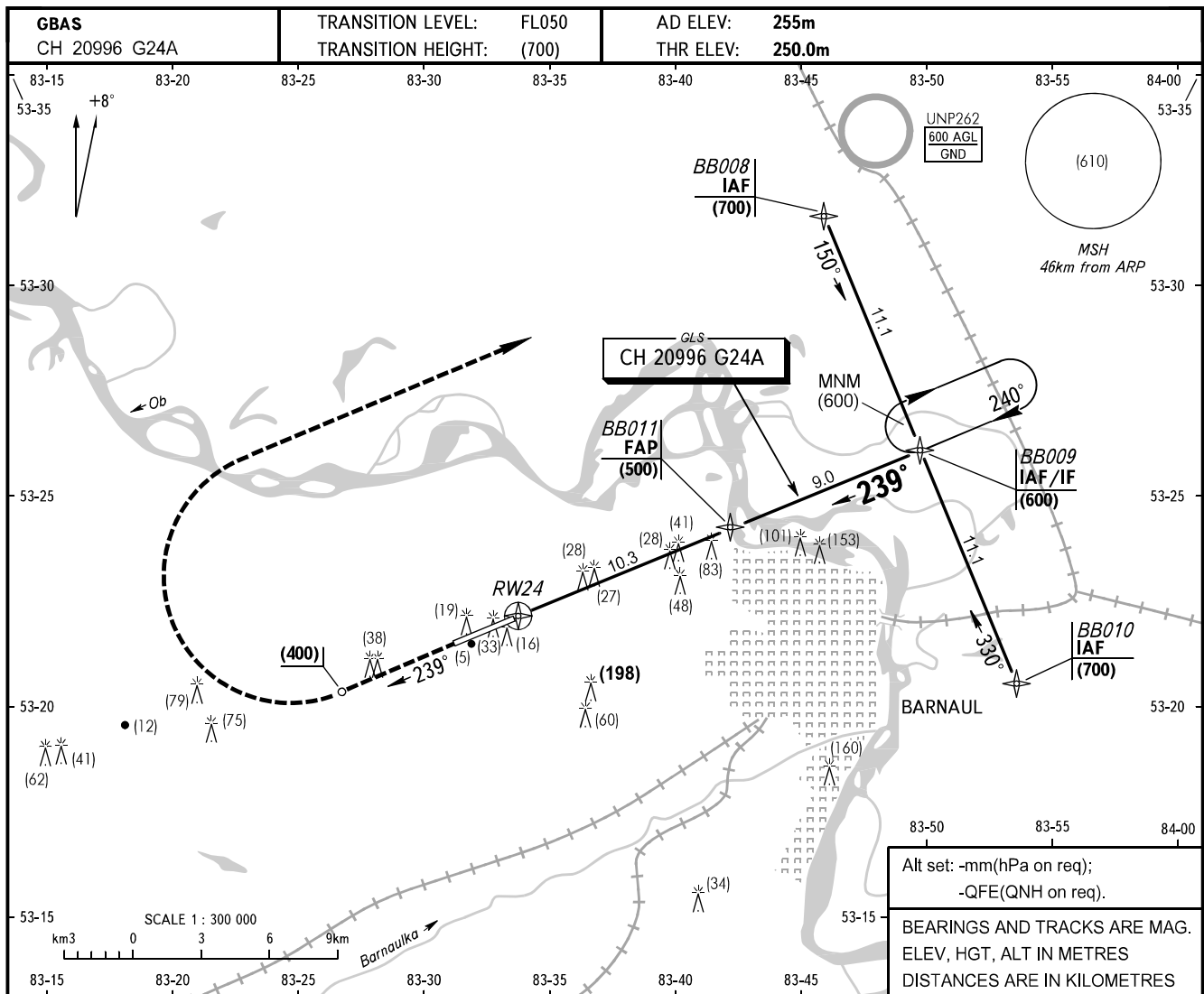


**INSTRUMENT
APPROACH
CHART - ICAO**

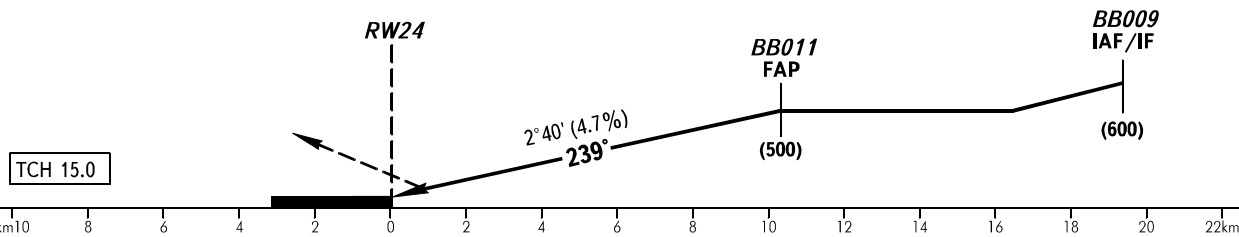
TOWER	123.500
-------	---------

BARNAUL, RUSSIA
MIKHAYLOVKA
GLS RWY 24



MISSED APPROACH

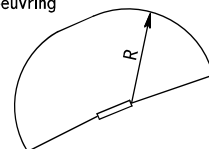
Climb on track 239° to (400), then turn RIGHT to BB008 climbing to (700), then according to chart.



OCA(H)		A	B	C	D
Straight-in Approach		307(57)	310(60)	317(67)	320(70)
Circling		538(288)	538(288)	568(318)	568(318)
	Visual manoeuvring south of AD is PROHIBITED.				

WARNING

The radiuses of visual manoeuvring (circling) area for ACFT categories are as follows:
A - 5400m
B - 7140m
C - 8430m
D - 9790m



GROUND SPEED	km/h	150	180	210	240	270	300	330	360	390	420	450
RATE OF DESCENT	m/s	2.0	2.3	2.7	3.1	3.5	3.9	4.3	4.7	5.1	5.4	5.9