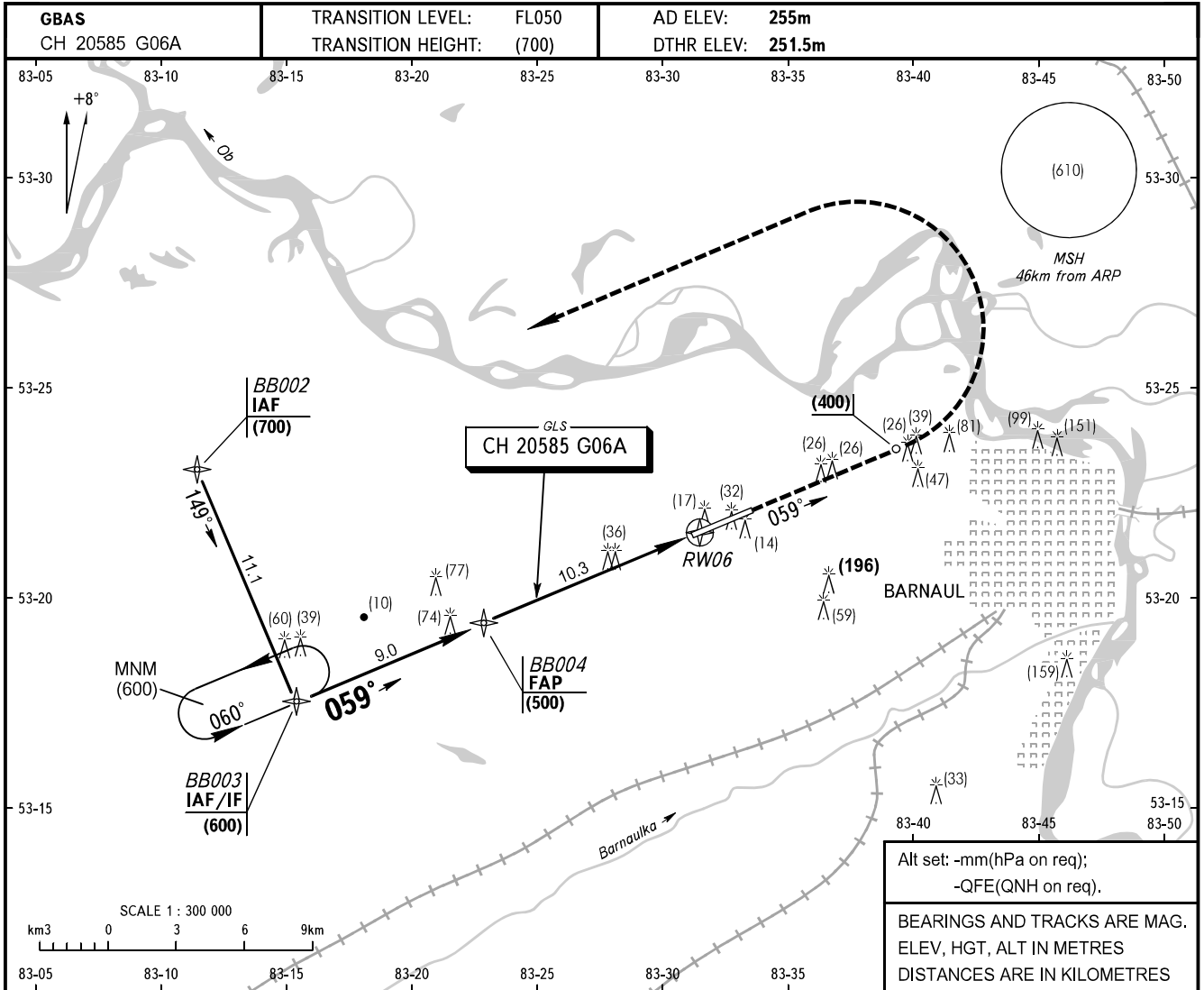


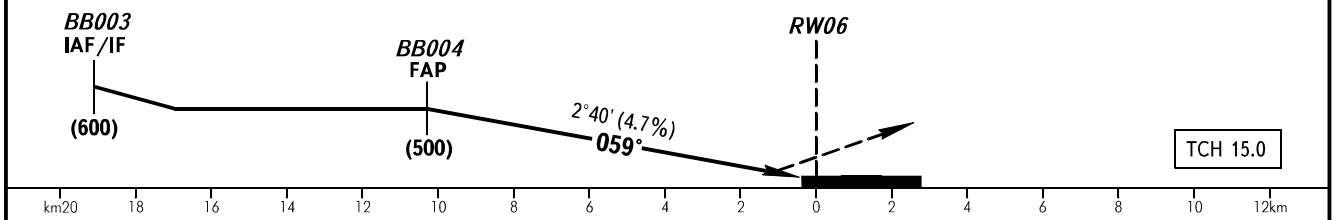
**INSTRUMENT  
APPROACH  
CHART - ICAO**

TOWER	123.500
-------	---------

**BARNAUL, RUSSIA  
MIKHAYLOVKA  
GLS RWY 06**



**MISSED APPROACH**  
Climb on track 059° to (400), then turn LEFT to BB002 climbing to (700), then according to chart.



OCA(H)		A	B	C	D
Straight-in Approach		297(45)	300(48)	303(51)	307(55)
Circling		538(286)	538(286)	568(316)	568(316)
	Visual manoeuvring south of AD is PROHIBITED.				

**WARNING**  
The radiuses of visual manoeuvring (circling) area for ACFT categories are as follows:  
A - 5400m  
B - 7140m  
C - 8430m  
D - 9790m

GROUND SPEED	km/h	150	180	210	240	270	300	330	360	390	420	450
RATE OF DESCENT	m/s	2.0	2.3	2.7	3.1	3.5	3.9	4.3	4.7	5.1	5.4	5.9

CHANGE: BB004