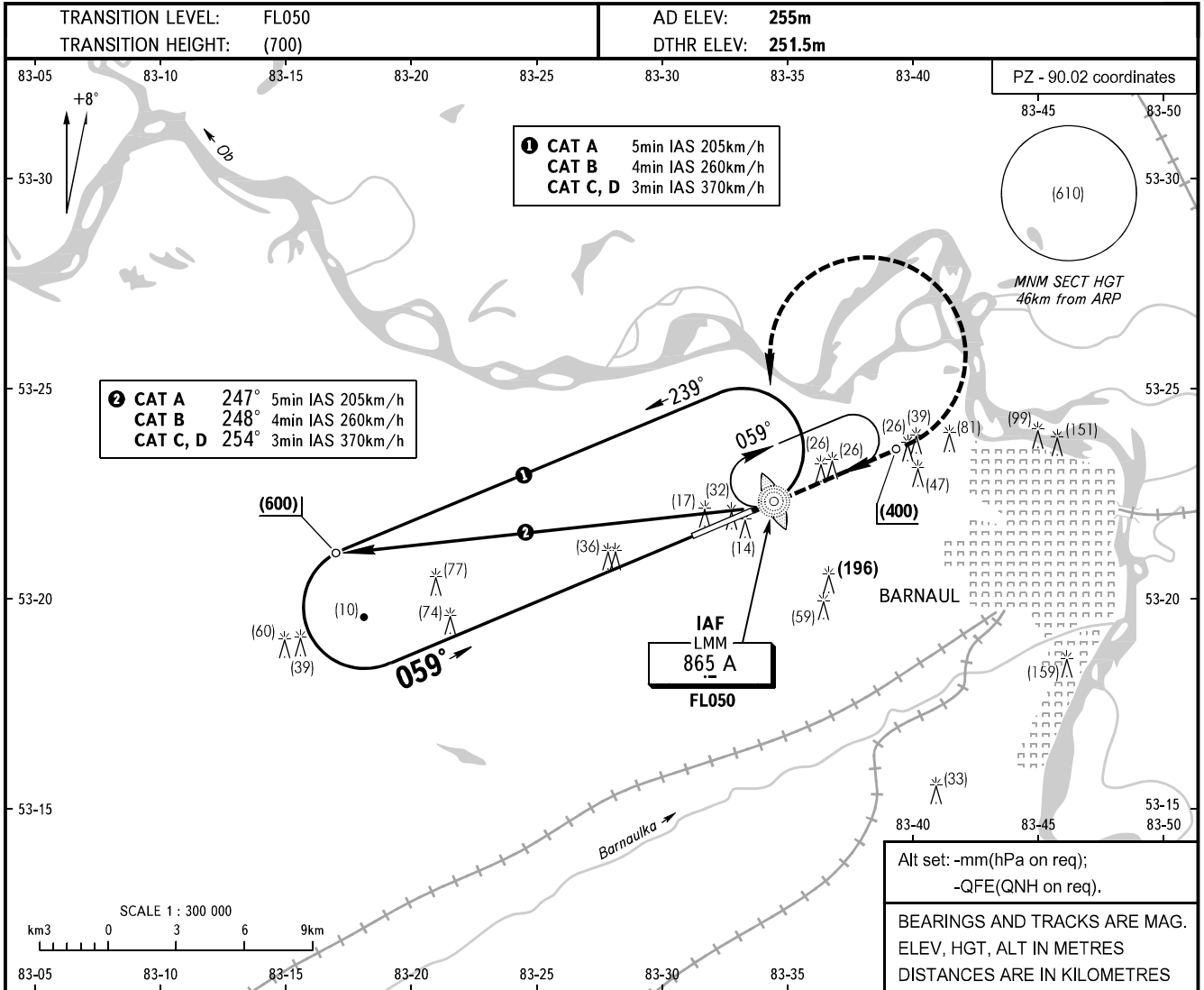


**INSTRUMENT
APPROACH
CHART - ICAO**

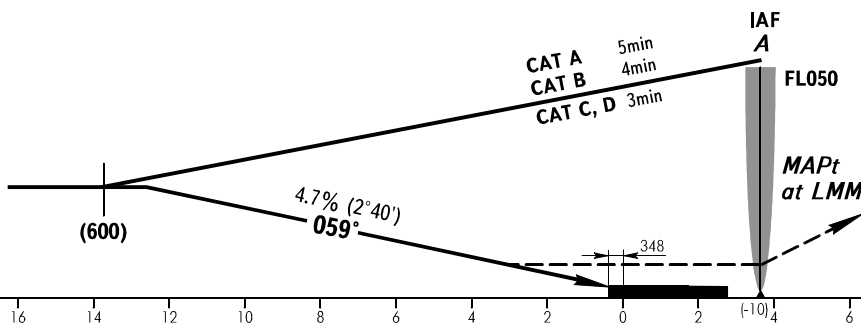
TOWER **123.500**

BARNAUL, RUSSIA
MIKHAYLOVKA
NDB T RWY 06



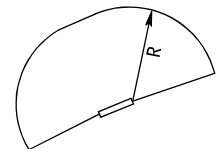
The distance to NDB/MKR is specified relative to the displaced RWY threshold.

MISSED APPROACH
Climb on track 059° to (400), then turn LEFT to LMM A climbing to (600), then according to chart.



OCA(H)		A	B	C	D								
Straight-in Approach	WO FAF	420(170)	420(170)	420(170)	420(170)								
Circling		538(286)	538(286)	568(316)	568(316)								
	Visual manoeuvring south of AD is PROHIBITED.												
GROUND SPEED		km/h	150	180	210	240	270	300	330	360	390	420	450
RATE OF DESCENT		m/s	2.0	2.3	2.7	3.1	3.5	3.9	4.3	4.7	5.1	5.4	5.9

The radiuses of visual manoeuvring (circling) area for ACFT categories are as follows:
- A - 5400m
- B - 7140m
- C - 8430m
- D - 9790m



CHANGE: LMM COORD