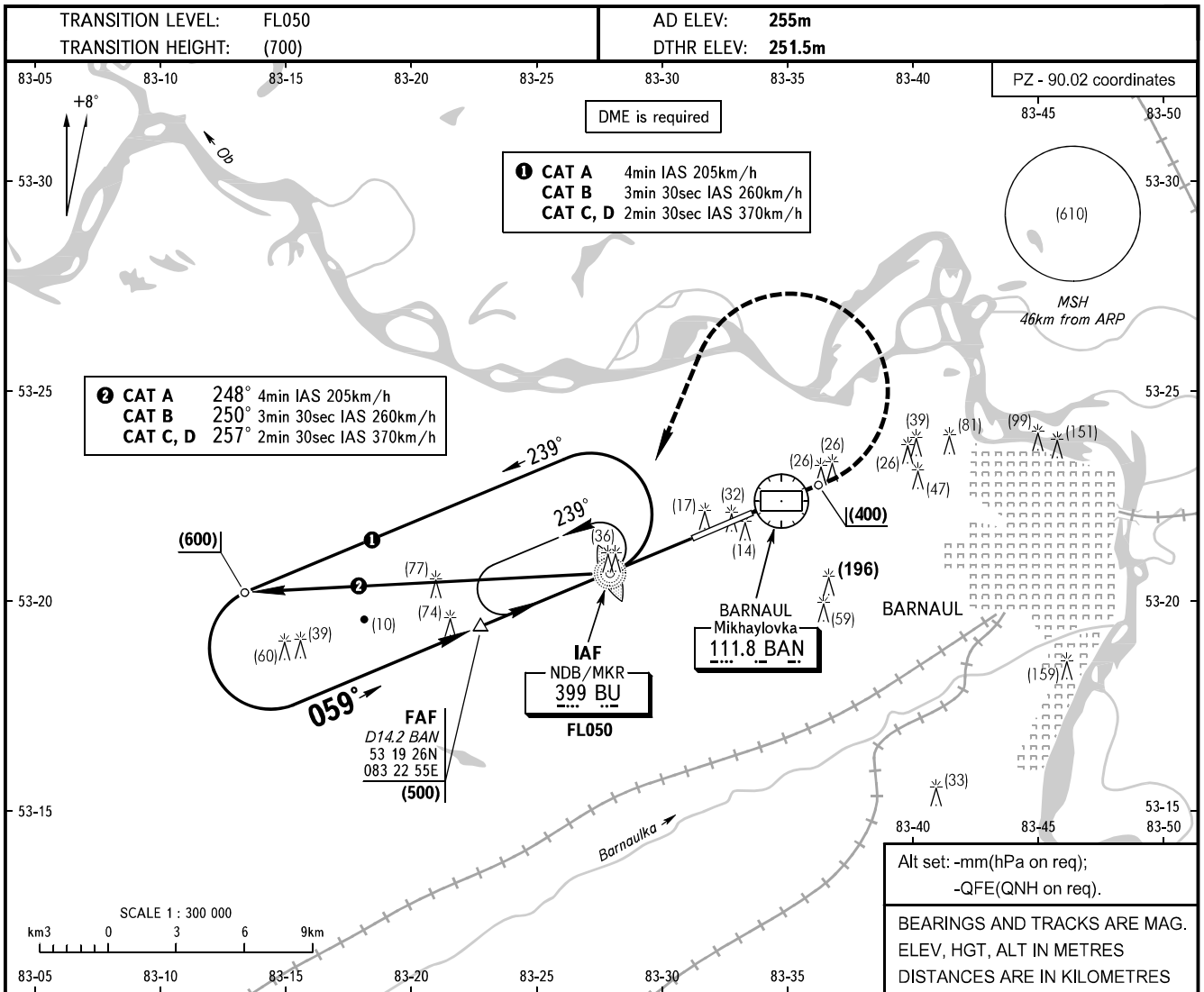


**INSTRUMENT
APPROACH
CHART - ICAO**

TOWER **123.500**

BARNAUL, RUSSIA
MIKHAYLOVKA
NDB V RWY 06

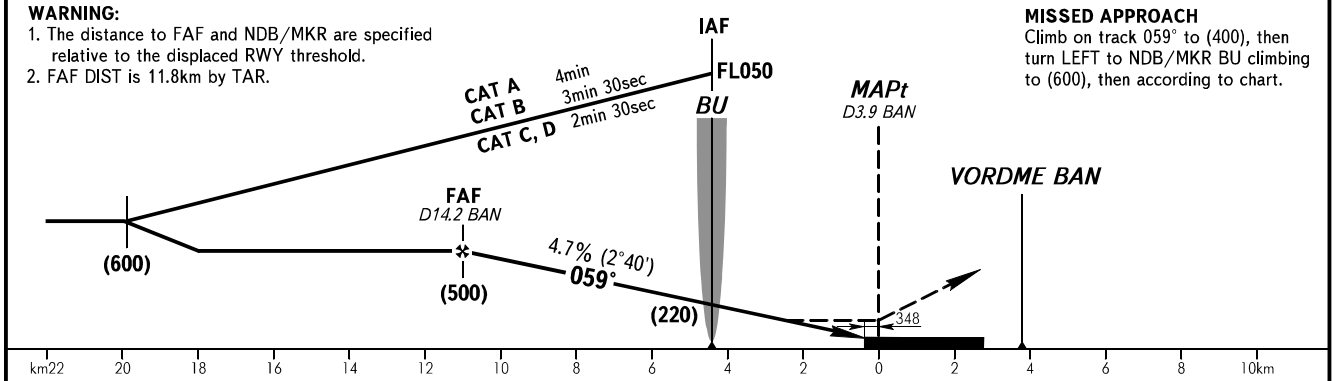


WARNING:

- The distance to FAF and NDB/MKR are specified relative to the displaced RWY threshold.
- FAF DIST is 11.8km by TAR.

MISSED APPROACH

Climb on track 059° to (400), then turn LEFT to NDB/MKR BU climbing to (600), then according to chart.



OCA(H)		A	B	C	D
Straight-in	With FAF	360(110)	360(110)	360(110)	360(110)
	WO FAF	480(230)	480(230)	480(230)	480(230)
Approach					
Circling		538(286)	538(286)	568(316)	568(316)
	Visual manoeuvring south of AD is PROHIBITED.				

WARNING
The radiuses of visual manoeuvring (circling) area for ACFT categories are as follows:
A - 5400m
B - 7140m
C - 8430m
D - 9790m

GROUND SPEED	km/h	150	180	210	240	270	300	330	360	390	420	450
RATE OF DESCENT	m/s	2.0	2.3	2.7	3.1	3.5	3.9	4.3	4.7	5.1	5.4	5.9