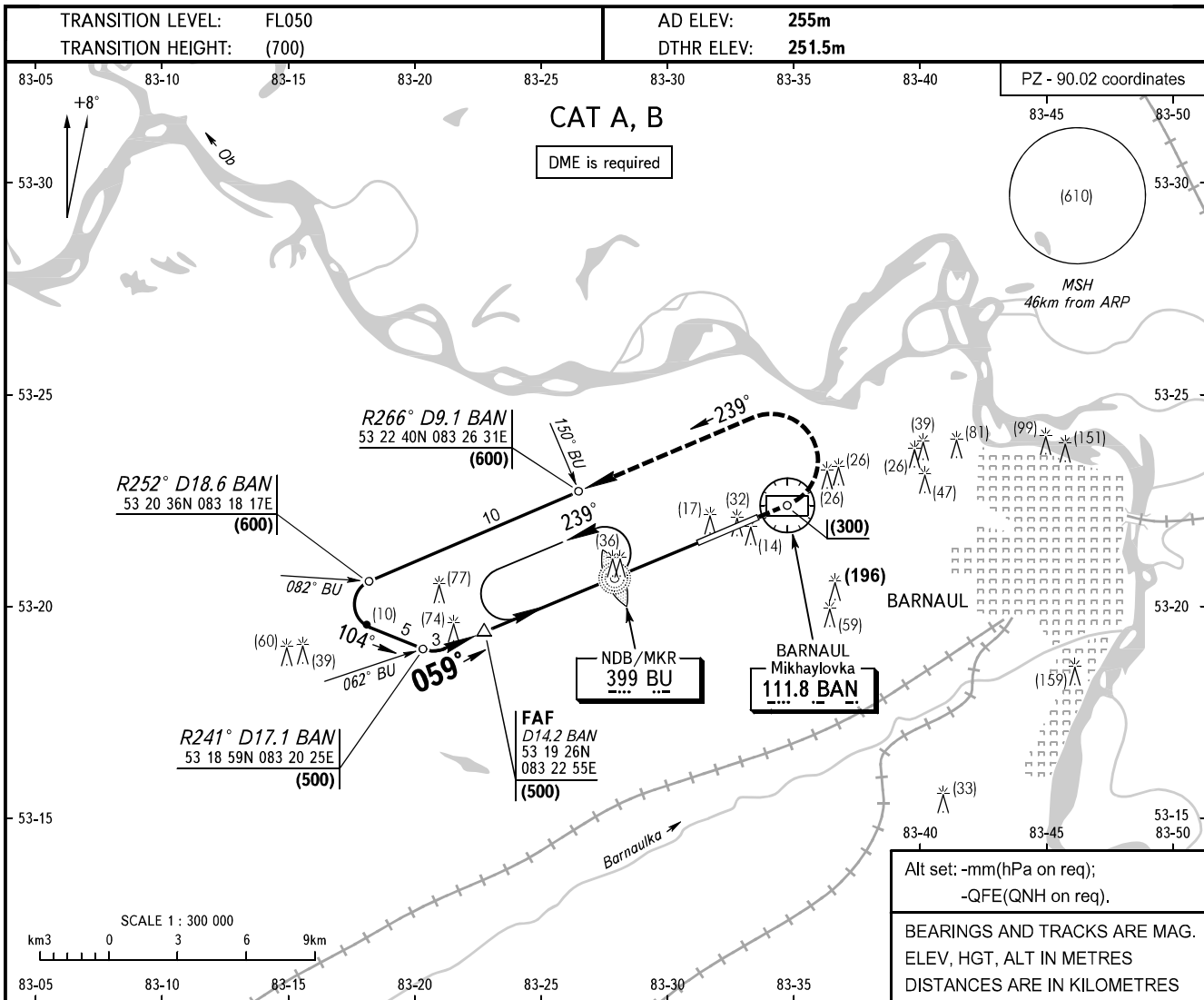


**INSTRUMENT
APPROACH
CHART - ICAO**

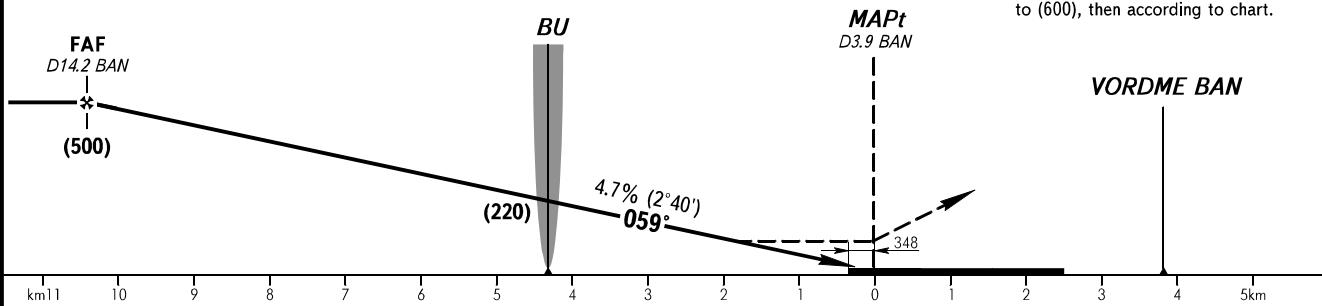
TOWER **123.500**

**BARNAUL, RUSSIA
MIKHAYLOVKA
NDB X RWY 06**



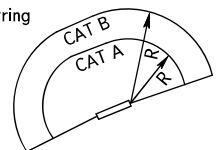
FAF DIST is 11.8km by TAR.

MISSED APPROACH
Climb on track 059° to (300), then turn LEFT onto track 239° climbing to (600), then according to chart.



OCA(H)		A	B	C	D
Straight-in Approach		360(110)	360(110)		
Circling		538(286)	538(286)		
	Visual manoeuvring south of AD is PROHIBITED.				

WARNING
The radiuses of visual manoeuvring (circling) area for ACFT categories are as follows:
A - 5400m
B - 7140m



GROUND SPEED	km/h	150	180	210	240	270	300	330	360	390	420	450
RATE OF DESCENT	m/s	2.0	2.3	2.7	3.1	3.5	3.9	4.3	4.7	5.1	5.4	5.9

CHANGE: NIL