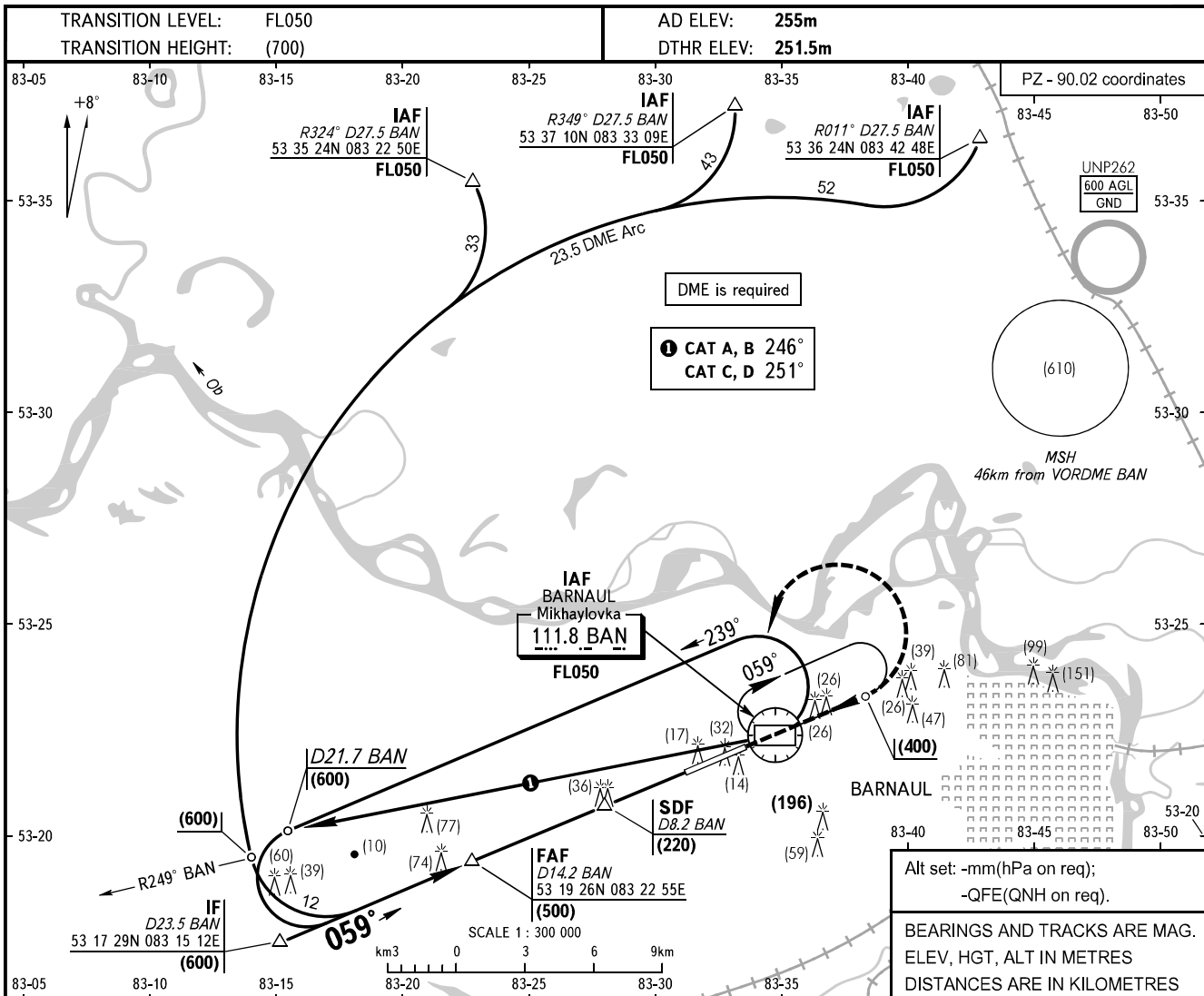


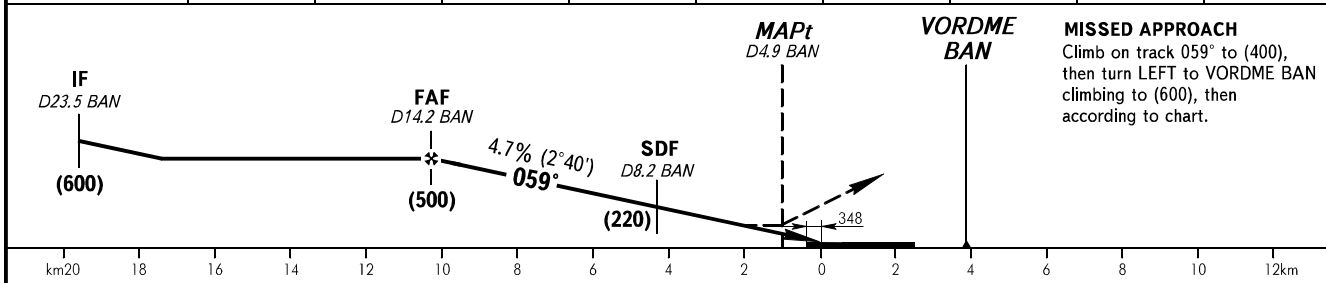
**INSTRUMENT
APPROACH
CHART - ICAO**

**BARNAUL, RUSSIA
MIKHAYLOVKA
VOR RWY 06**

TOWER 123.500



DTHR DISTANCE	10	9	8	7	6	5	4	3	2
DME BAN	13.9	12.9	11.9	10.9	9.9	8.9	7.9	6.9	5.9
HGT 2°40' APCH	(485)	(440)	(390)	(345)	(300)	(250)	(205)	(155)	(110)



OCA(H)		A	B	C	D
Straight-in Approach		350(100)	350(100)	350(100)	350(100)
Circling		538(286)	538(286)	568(316)	568(316)
	Visual manoeuvring south of AD is PROHIBITED.				

WARNING
The radii of visual manoeuvring (circling) area for ACFT categories are as follows:
A - 5400m
B - 7140m
C - 8430m
D - 9790m

GROUND SPEED	km/h	150	180	210	240	270	300	330	360	390	420	450
RATE OF DESCENT	m/s	2.0	2.3	2.7	3.1	3.5	3.9	4.3	4.7	5.1	5.4	5.9

CHANGE: NIL