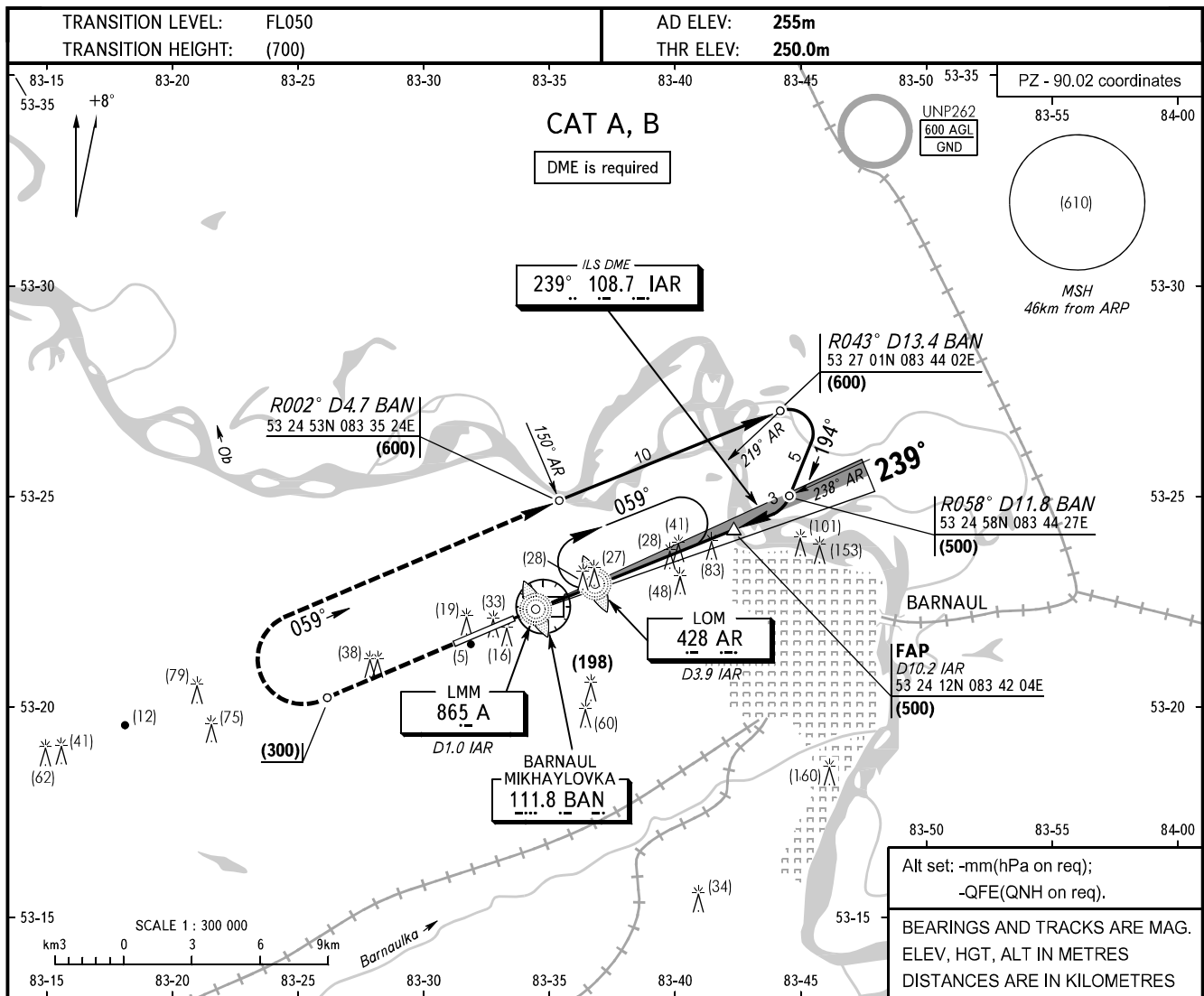


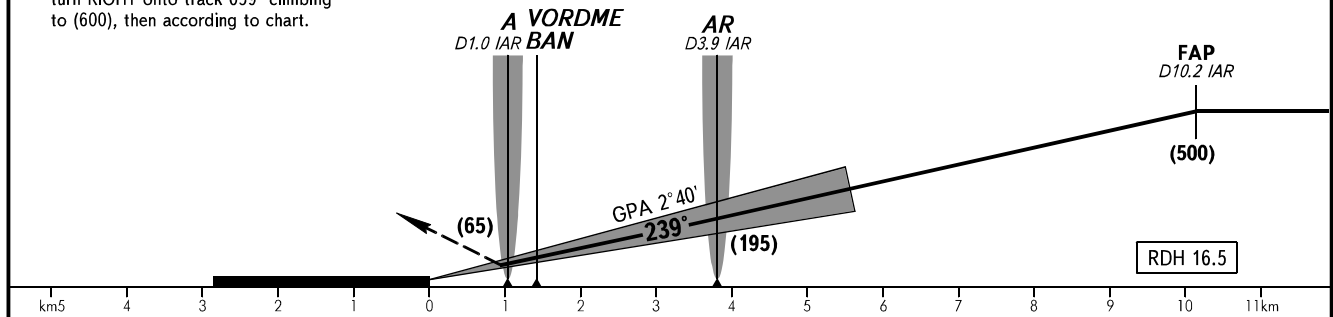
**INSTRUMENT
APPROACH
CHART - ICAO**

**BARNAUL, RUSSIA
MIKHAYLOVKA
ILS Y RWY 24**

TOWER	123.500
-------	---------



MISSED APPROACH
Climb on track 239° to (300), then turn RIGHT onto track 059° climbing to (600), then according to chart.



OCA(H)		A	B	C	D								
Straight-in Approach		307(57)	310(60)										
Circling		538(288)	538(288)										
	Visual manoeuvring south of AD is PROHIBITED.												
GROUND SPEED		km/h	150	180	210	240	270	300	330	360	390	420	450
RATE OF DESCENT		m/s	2.0	2.3	2.7	3.1	3.5	3.9	4.3	4.7	5.1	5.4	5.9

WARNING

The radiuses of visual manoeuvring (circling) area for ACFT categories are as follows:
A - 5400m
B - 7140m

