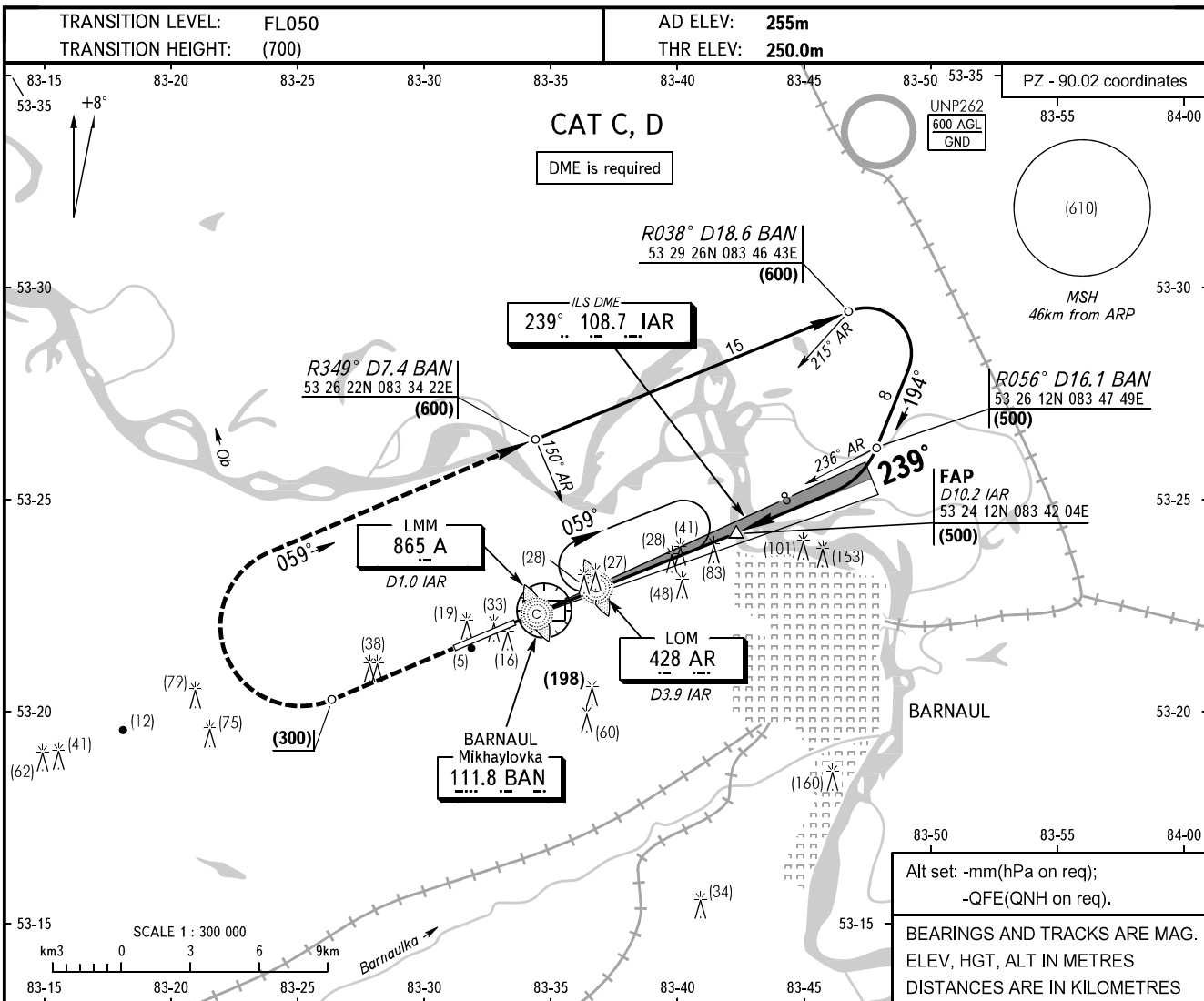


**INSTRUMENT
APPROACH
CHART - ICAO**

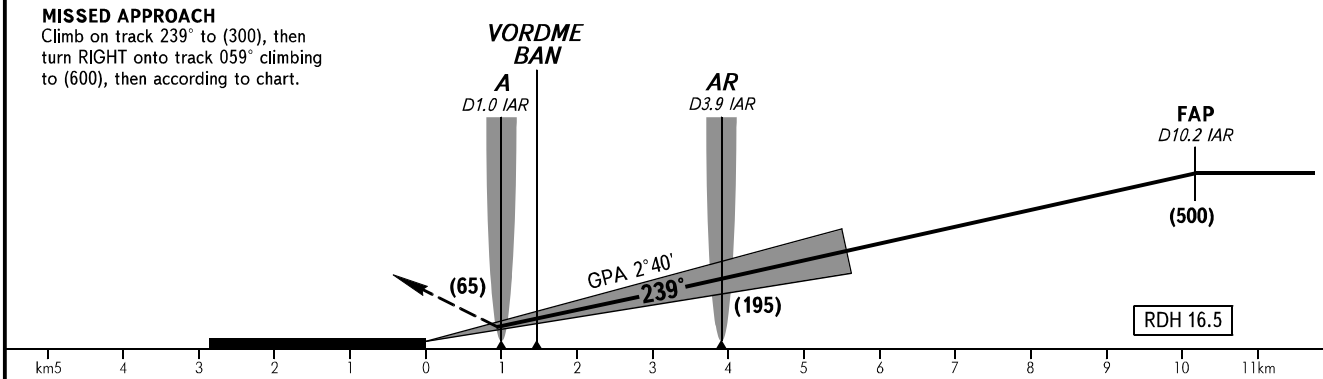
**BARNAUL, RUSSIA
MIKHAYLOVKA
ILS Z RWY 24**

TOWER	123.500
-------	---------



MISSED APPROACH

Climb on track 239° to (300), then turn RIGHT onto track 059° climbing to (600), then according to chart.



OCA(H)		A	B	C	D	WARNING The radiuses of visual manoeuvring (circling) area for ACFT categories are as follows: C - 8430m D - 9790m										
Straight-in Approach				317(67)	320(70)											
Circling				568(318)	568(318)											
	Visual manoeuvring south of AD is PROHIBITED.															
GROUND SPEED	km/h	150	180	210	240	270	300	330	360	390	420	450				
RATE OF DESCENT	m/s	2.0	2.3	2.7	3.1	3.5	3.9	4.3	4.7	5.1	5.4	5.9				

CHANGE: New chart