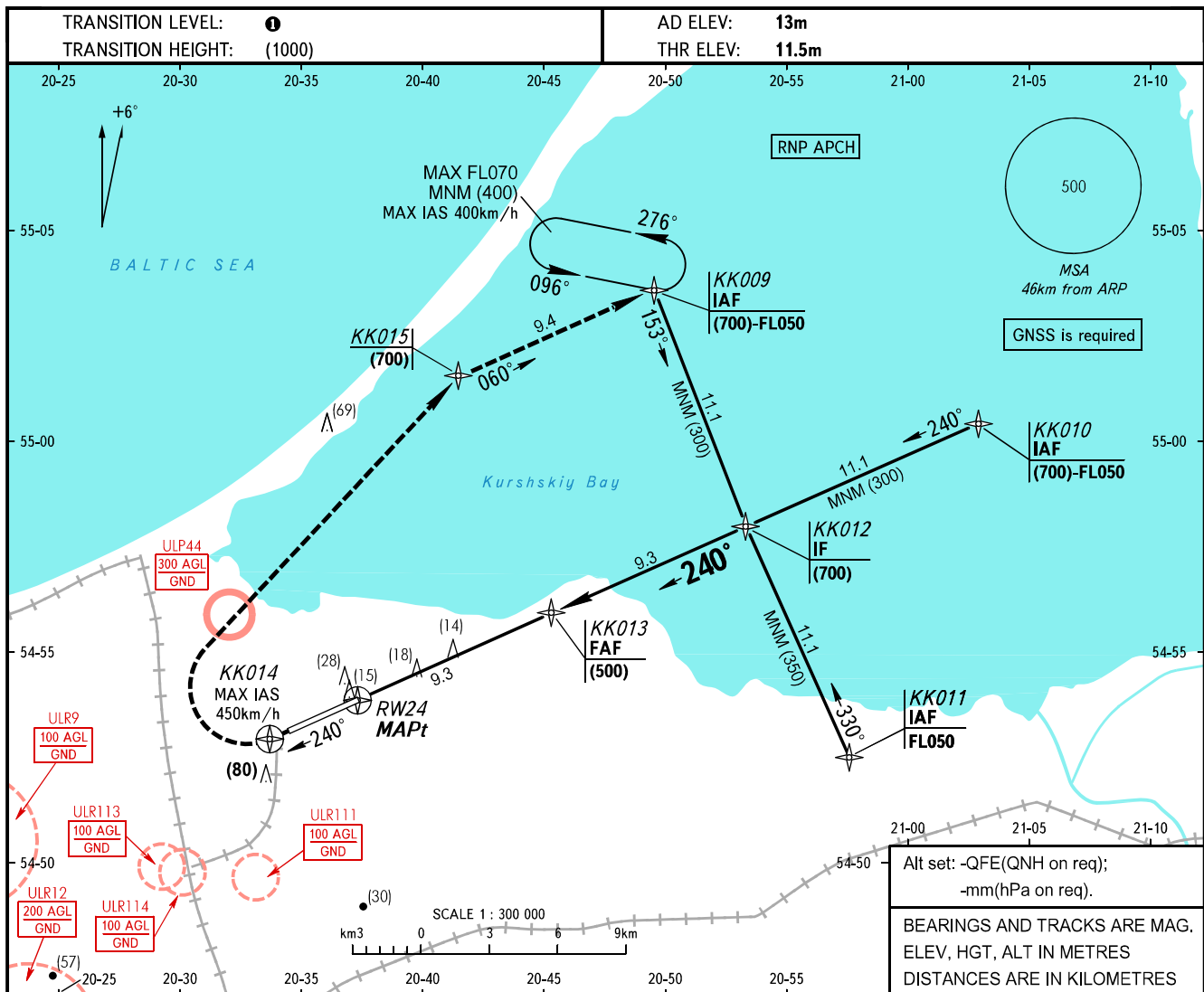


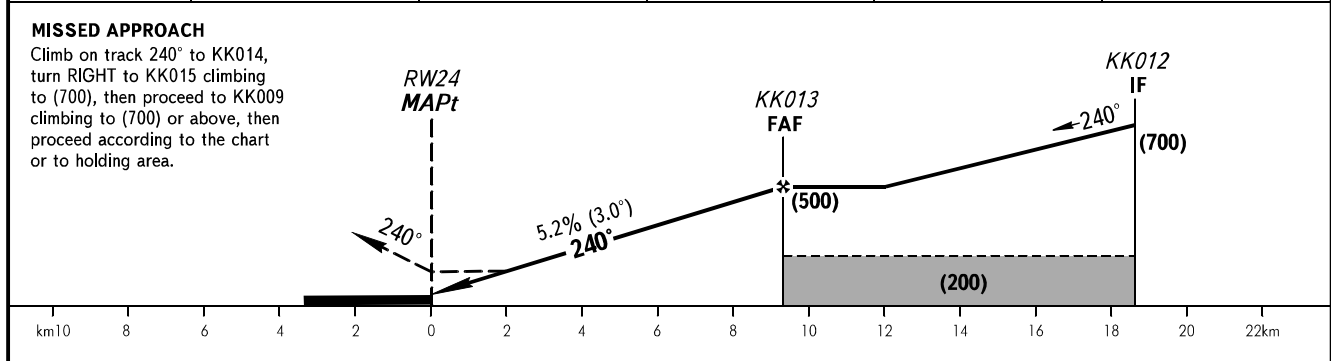
**INSTRUMENT  
APPROACH  
CHART - ICAO**

TOWER **127.200**

**KALININGRAD, RUSSIA**  
KHRABROVO  
RNAV RWY 24



DIST TO RW24	2	4	6	8	9.3
HEIGHT	(120)	(225)	(330)	(435)	(500)



OCA(H)		A	B	C	D	<b>1</b> TRANSITION LEVEL: - FL050 when QFE is 742mm mercury column or above; - FL060 when QFE is 741-715mm mercury column; - FL070 when QFE is less than 715mm mercury column.  <b>WARNING</b> MAPt at RW24. Timing not authorized for defining MAPt.				
Straight-in Approach	LNAV	115(105)	115(105)	115(105)	115(105)					
	Circling	185(170)	185(170)	260(250)	260(250)					
Visual manoeuvring to the south of the AD is <b>PROHIBITED</b> <b>2</b>										
GROUND SPEED	km/h	150	180	210	240	270	300	330	360	390
RATE OF DESCENT	m/s	2.2	2.6	3.0	3.5	3.9	4.3	4.8	5.2	5.6