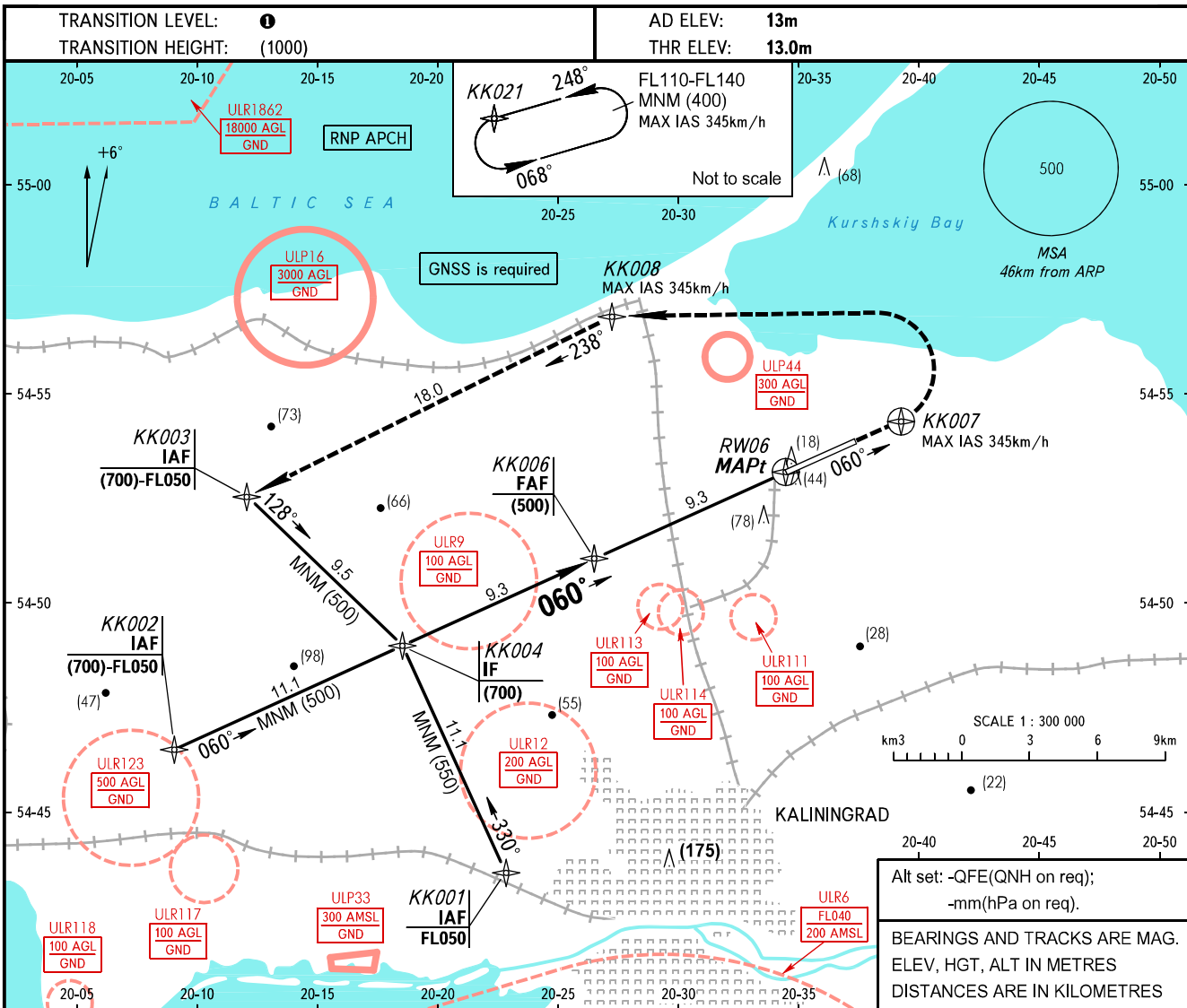


**INSTRUMENT
APPROACH
CHART - ICAO**

TOWER **127.200**

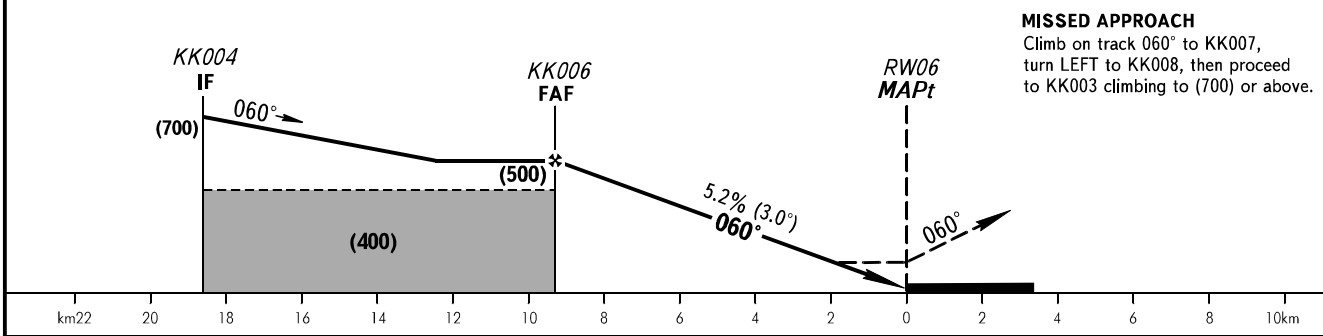
**KALININGRAD, RUSSIA
KHRABROVO
RNAV RWY 06**



Alt set: -QFE(QNH on req);
-mm(hPa on req).

BEARINGS AND TRACKS ARE MAG.
ELEV, HGT, ALT IN METRES
DISTANCES ARE IN KILOMETRES

DIST TO RW06	9.3	8	6	4	2
HEIGHT	(500)	(435)	(330)	(225)	(120)



OCA(H)		A	B	C	D
Straight-in Approach	LNAV	135(120)	135(120)	135(120)	135(120)
Circling		185(170)	185(170)	260(250)	260(250)
	Visual manoeuvring to the south of the AD is PROHIBITED ②				

① TRANSITION LEVEL:
- FL050 when QFE is 742mm mercury column or above;
- FL060 when QFE is 741-715mm mercury column;
- FL070 when QFE is less than 715mm mercury column.

WARNING
MAPt at RW06. Timing not authorized for defining MAPt.

GROUND SPEED	km/h	150	180	210	240	270	300	330	360	390
RATE OF DESCENT	m/s	2.2	2.6	3.0	3.5	3.9	4.3	4.8	5.2	5.6

CHANGE: ULR116 withdrawn, ULP44