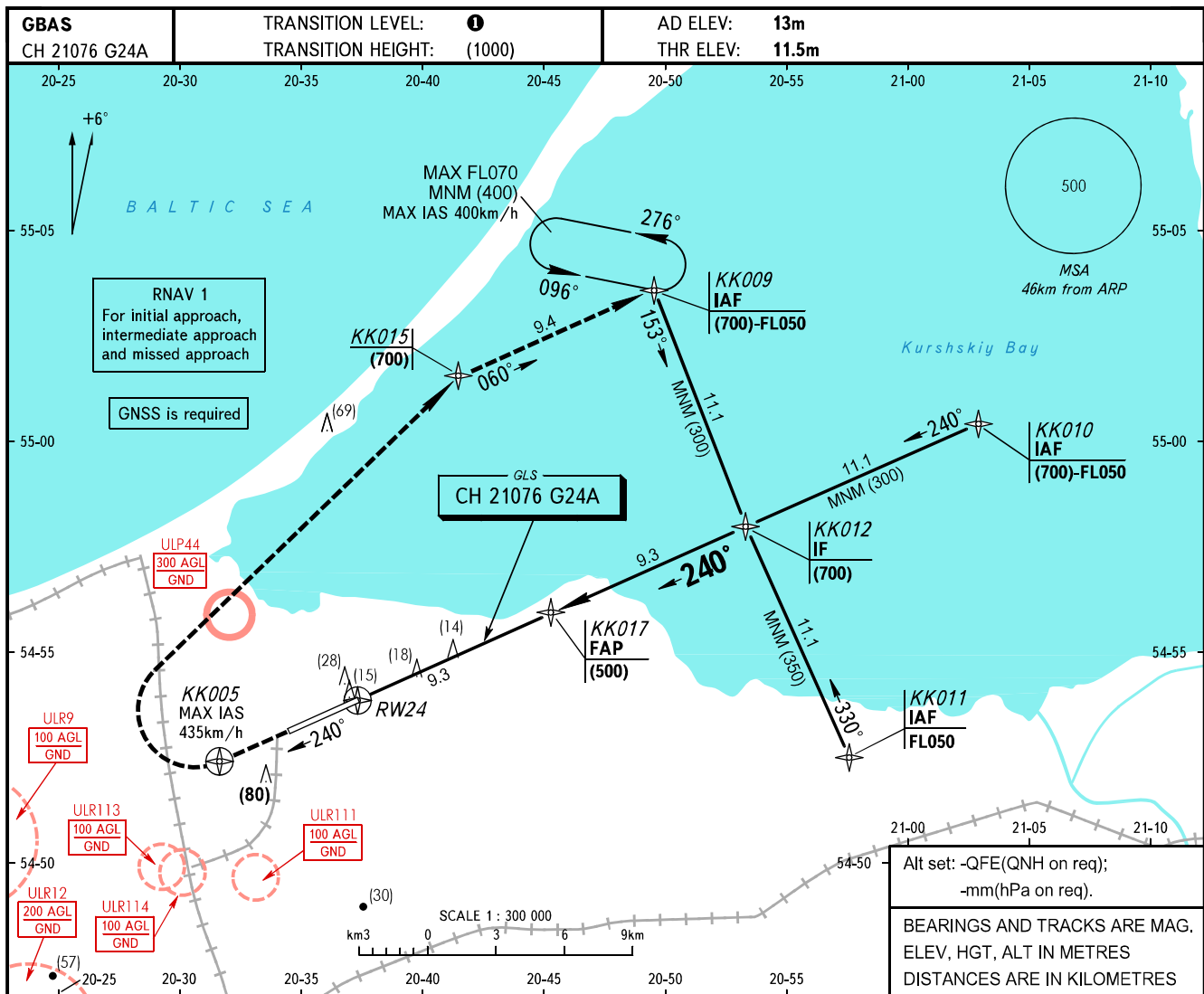


**INSTRUMENT
APPROACH
CHART - ICAO**

**KALININGRAD, RUSSIA
KHRABROVO
GLS RWY 24**

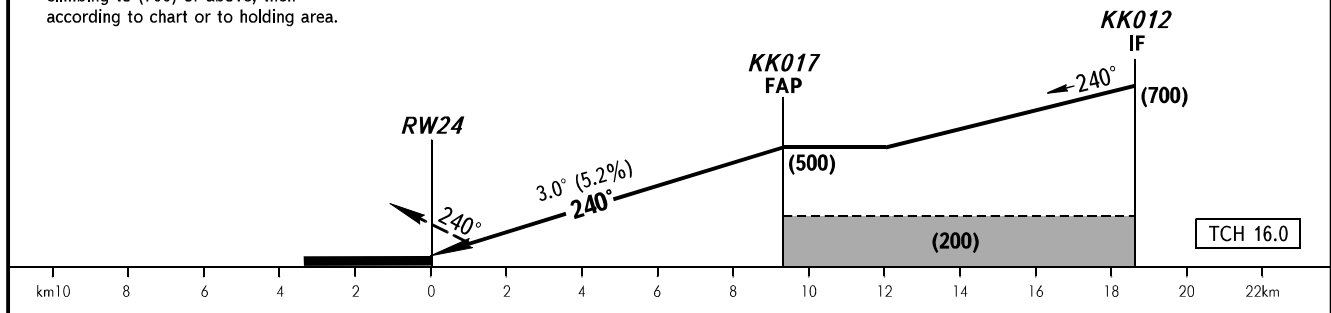
TOWER **127.200**



Alt set: -QFE (QNH on req);
-mm (hPa on req).
BEARINGS AND TRACKS ARE MAG.
ELEV, HGT, ALT IN METRES
DISTANCES ARE IN KILOMETRES

MISSED APPROACH

Climb on track 240° to KK005, turn RIGHT to KK015 climbing to (700), then proceed to KK009 climbing to (700) or above, then according to chart or to holding area.



OCA(H)	A	B	C	D						
Straight-in Approach	54(42)	57(45)	61(49)	65(53)						
Circling	185(170)	185(170)	260(250)	260(250)						
Visual manoeuvring to the south of the AD is PROHIBITED										
GROUND SPEED	km/h	150	180	210	240	270	300	330	360	390
RATE OF DESCENT	m/s	2.2	2.6	3.0	3.5	3.9	4.3	4.8	5.2	5.6

1 TRANSITION LEVEL:
- FL050 when QFE is 742mm mercury column or above;
- FL060 when QFE is 741-715mm mercury column;
- FL070 when QFE is less than 715mm mercury column.

