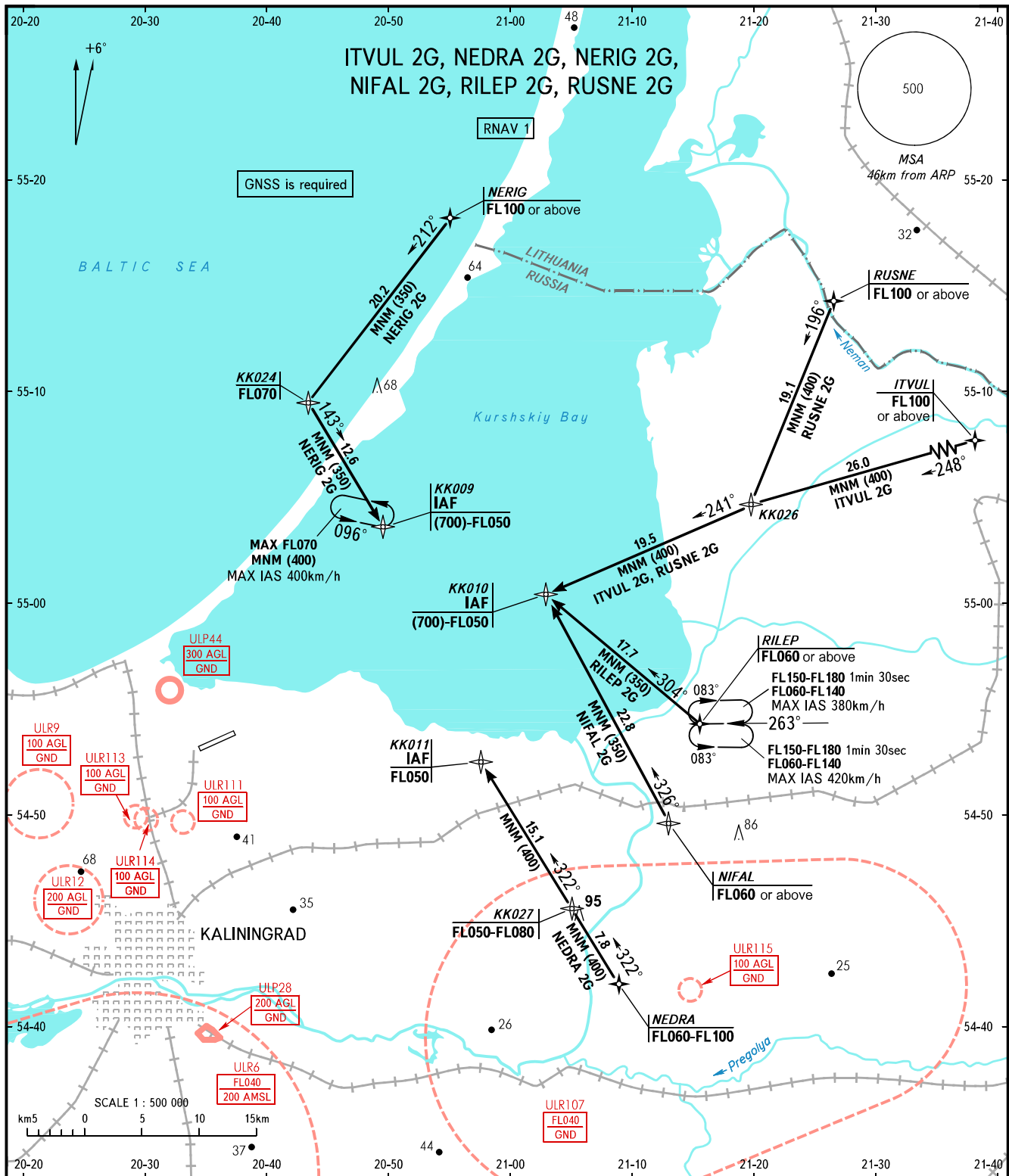


STANDARD ARRIVAL CHART
INSTRUMENT (STAR) - ICAO

KALININGRAD, RUSSIA
KHRABROVO
RNAV Rwy 24

TRANSITION
LEVEL: **1**



APPROACH **126.000**
TOWER **127.200**

- 1** TRANSITION LEVEL:
- FL050 when QFE is 742mm mercury column or above;
- FL060 when QFE is 741-715mm mercury column;
- FL070 when QFE is less than 715mm mercury column.

BEARINGS AND TRACKS ARE MAGNETIC
ALTITUDES, HEIGHTS AND ELEVATIONS ARE IN METRES
DISTANCES ARE IN KILOMETRES