

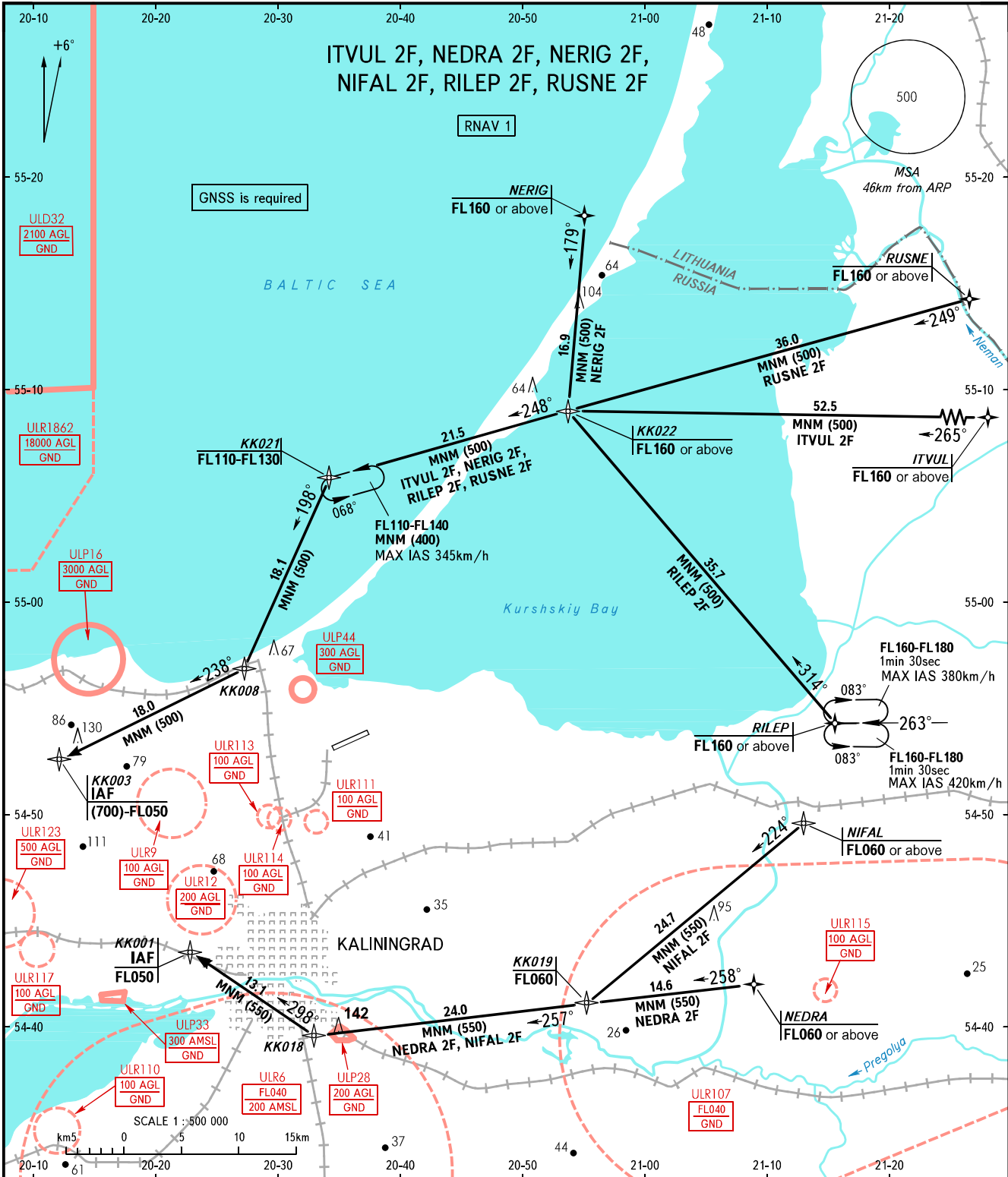
STANDARD ARRIVAL CHART
INSTRUMENT (STAR) - ICAO

KALININGRAD, RUSSIA

KHRABROVO

RNAV RWY 06

TRANSITION
LEVEL: **1**



APPROACH 126.000
TOWER 127.200

- 1** TRANSITION LEVEL:
- FL050 when QFE is 742mm mercury column or above;
 - FL060 when QFE is 741-715mm mercury column;
 - FL070 when QFE is less than 715mm mercury column.

BEARINGS AND TRACKS ARE MAGNETIC
ALTITUDES, HEIGHTS AND ELEVATIONS ARE IN METRES
DISTANCES ARE IN KILOMETRES

CHANGE: ULR116 withdrawn, ULP44