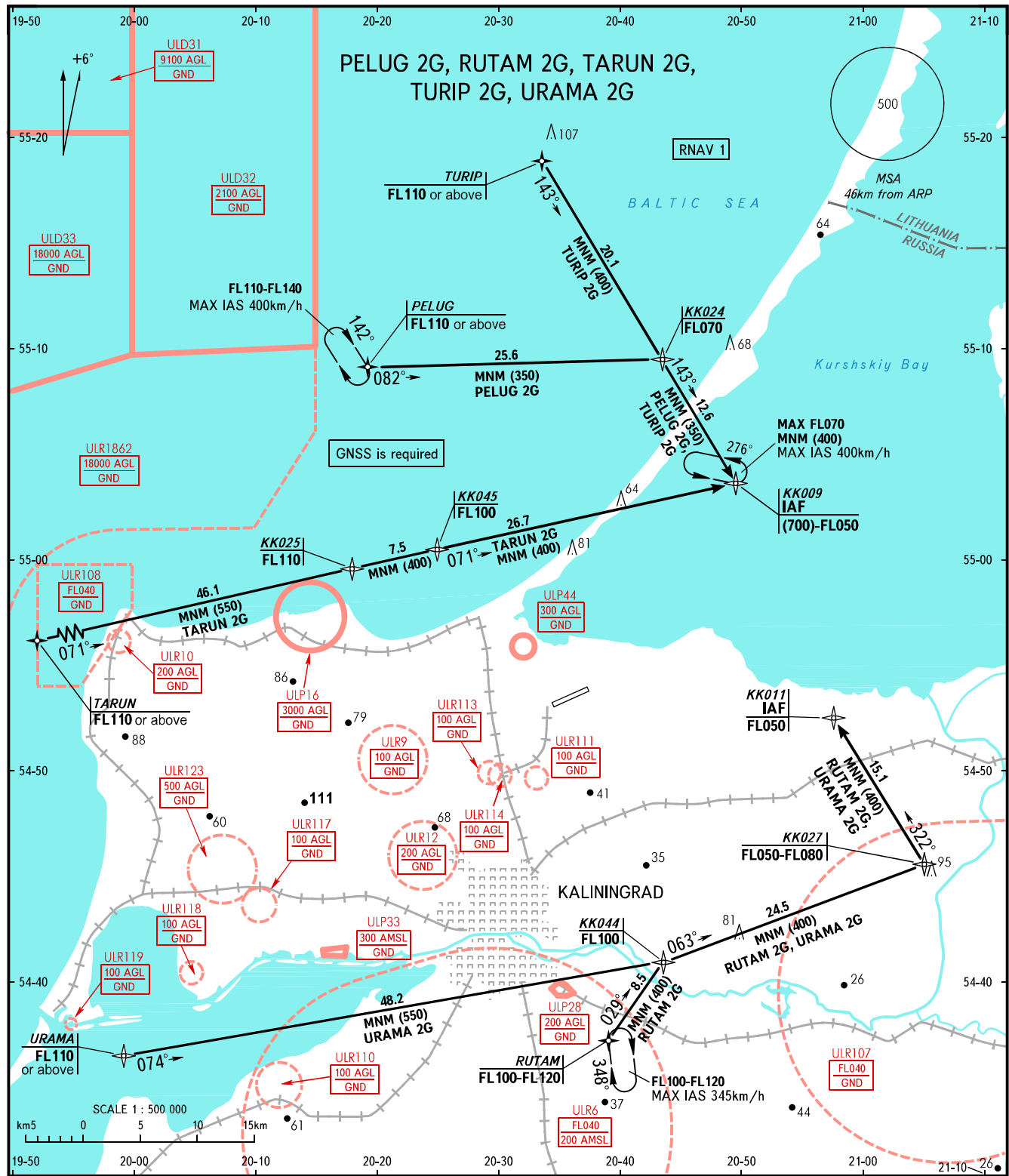


STANDARD ARRIVAL CHART  
INSTRUMENT (STAR) - ICAO

TRANSITION  
LEVEL : ①

KALININGRAD, RUSSIA  
KHRABROVO  
RNAV RWY 24



PELUG 2G, RUTAM 2G, TARUN 2G,  
TURIP 2G, URAMA 2G

RNAV 1

BALTIC SEA

Kurshskiy Bay

KALININGRAD

APPROACH 126.000  
TOWER 127.200

- ① TRANSITION LEVEL:
- FL050 when QFE is 742mm mercury column or above;
  - FL060 when QFE is 741-715mm mercury column;
  - FL070 when QFE is less than 715mm mercury column.

BEARINGS AND TRACKS ARE MAGNETIC  
ALTITUDES, HEIGHTS AND ELEVATIONS ARE IN METRES  
DISTANCES ARE IN KILOMETRES

CHANGE: ULR116 withdrawn, ULP44