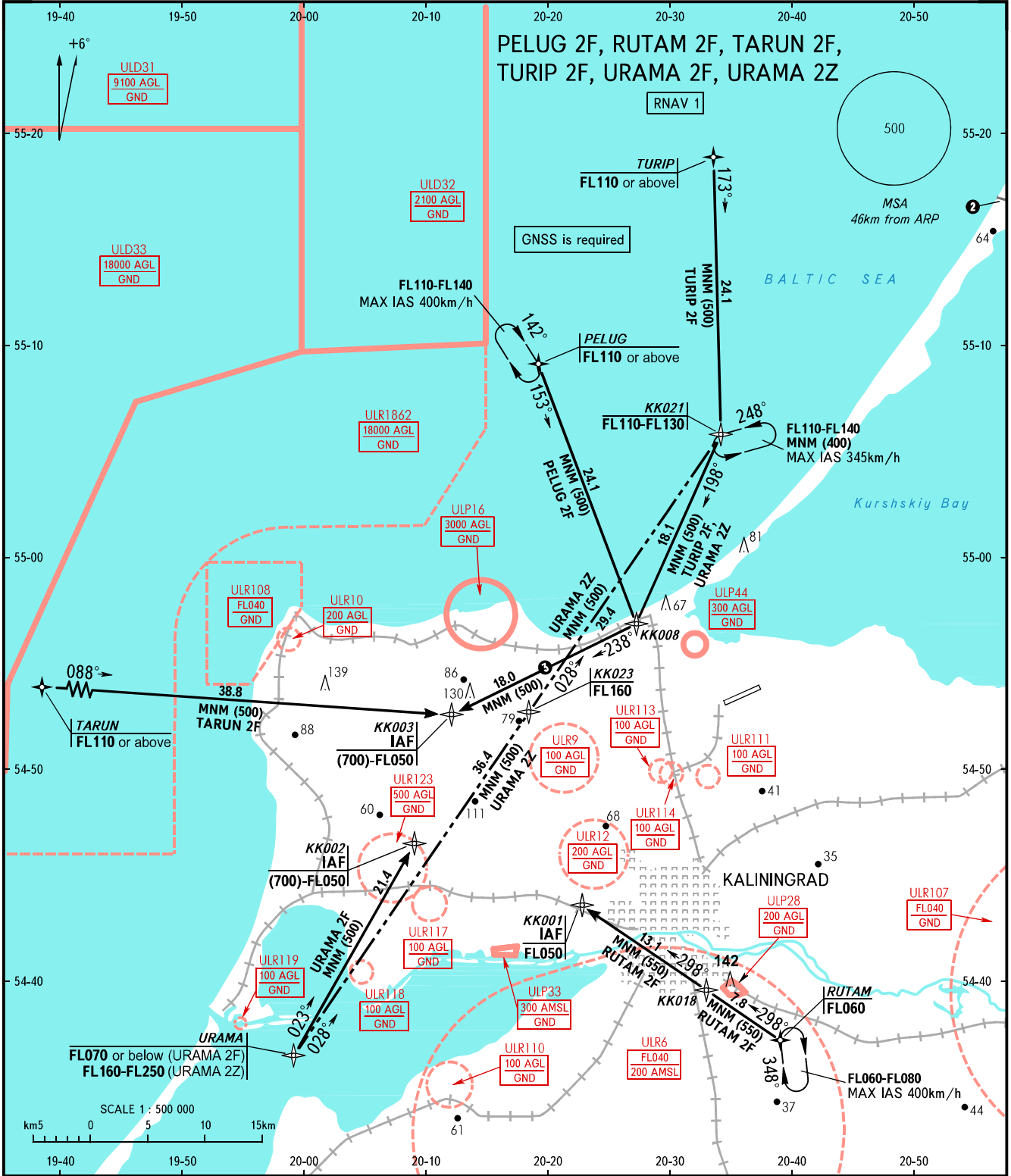


STANDARD ARRIVAL CHART
INSTRUMENT (STAR) - ICAO

KALININGRAD, RUSSIA
KHRABROVO
RNAV RWY 06

TRANSITION
LEVEL : 1



APPROACH TOWER 126.000 127.200

- 1 TRANSITION LEVEL:
 - FL050 when QFE is 742mm mercury column or above;
 - FL060 when QFE is 741-715mm mercury column;
 - FL070 when QFE is less than 715mm mercury column.
- 2 State border between RUSSIA and LITHUANIA.
- 3 PELUG 2F, TURIP 2F, URAMA 2Z.

BEARINGS AND TRACKS ARE MAGNETIC
ALTITUDES, HEIGHTS AND ELEVATIONS ARE IN METRES
DISTANCES ARE IN KILOMETRES

CHANGE: ULR116 withdrawn, ULP44