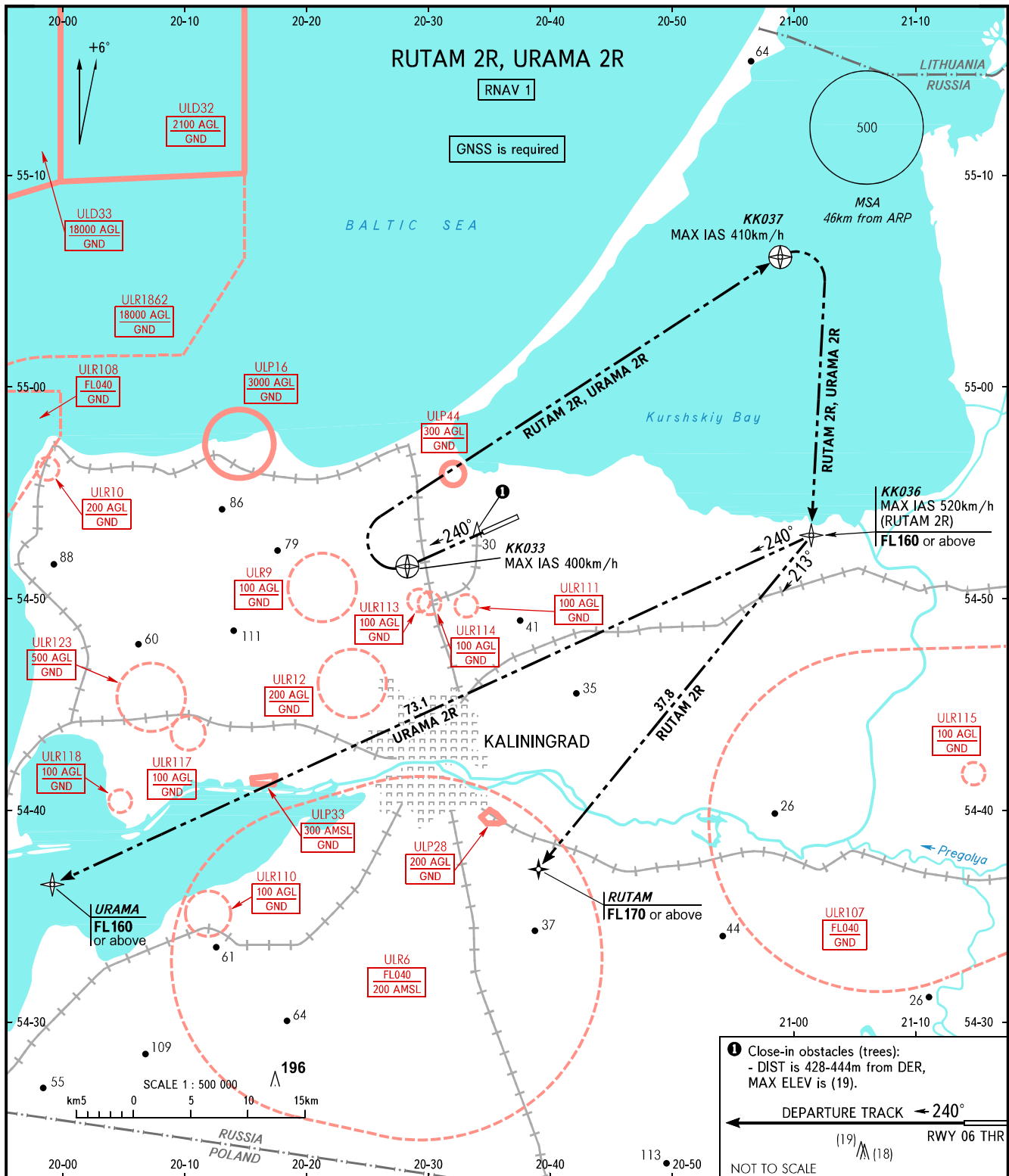


STANDARD DEPARTURE CHART  
INSTRUMENT (SID) - ICAO

TRANSITION  
HEIGHT : (1000)

KALININGRAD, RUSSIA  
KHRABROVO  
RNAV RWY 24



**1** Close-in obstacles (trees):  
- DIST is 428-444m from DER,  
MAX ELEV is (19).  
DEPARTURE TRACK ← 240°  
RWY 06 THR  
NOT TO SCALE

TOWER APPROACH 127.200  
126.000

**WARNING:**  
1. The minimum climb gradient is 5.5% up to FL160 (required due to the airspace limitation).  
2. There are close-in obstacles.

BEARINGS AND TRACKS ARE MAGNETIC  
ALTITUDES, HEIGHTS AND ELEVATIONS ARE IN METRES  
DISTANCES ARE IN KILOMETRES

CHANGE: ULR112; ULR116 withdrawn; ULP44