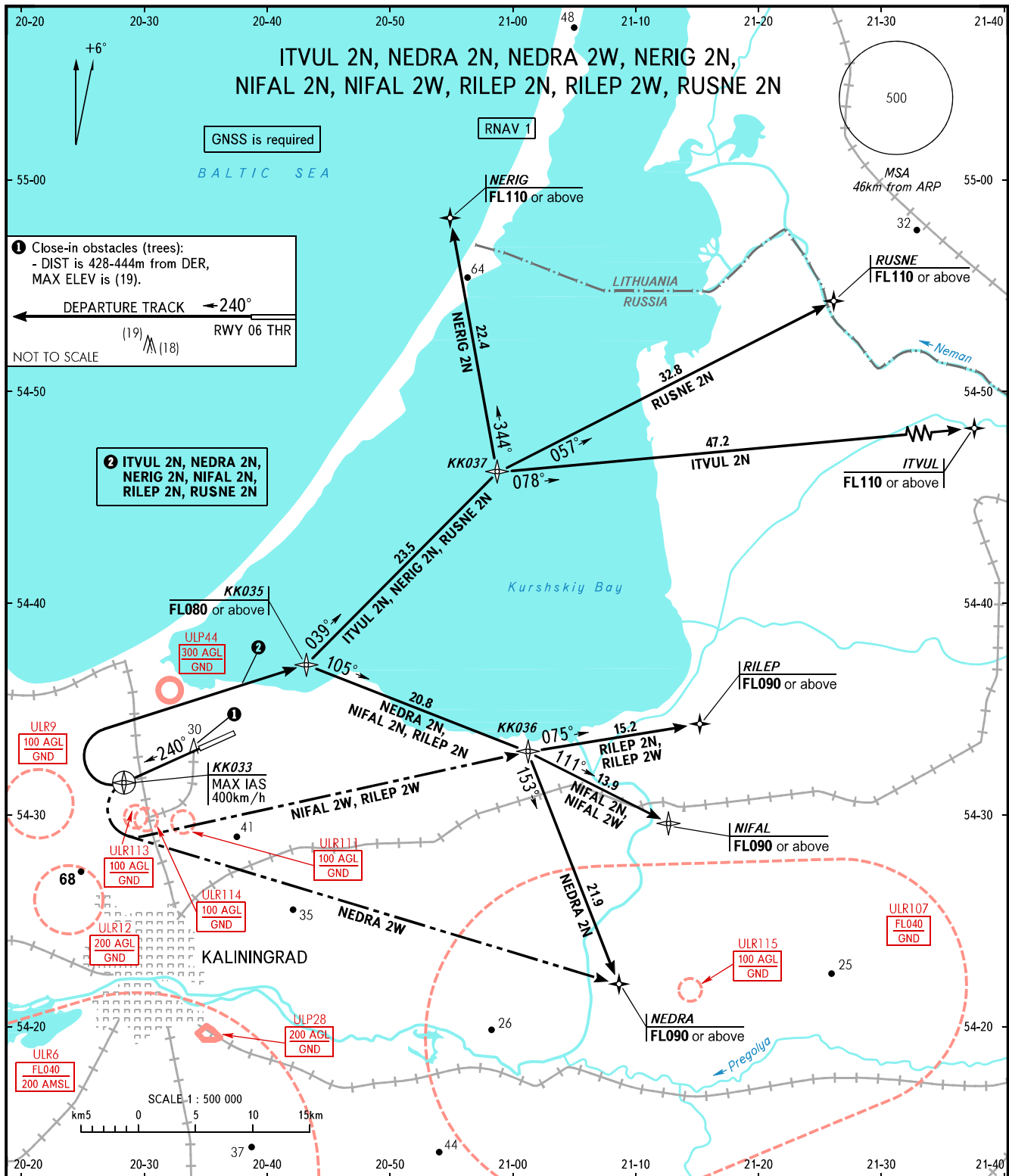


STANDARD DEPARTURE CHART  
INSTRUMENT (SID) - ICAO

TRANSITION  
LEVEL : (1000)

KALININGRAD, RUSSIA  
KHRABROVO  
RNAV Rwy 24



1 Close-in obstacles (trees):  
- DIST is 428-444m from DER,  
MAX ELEV is (19).  
DEPARTURE TRACK ← 240°  
RWY 06 THR  
NOT TO SCALE

2 ITVUL 2N, NEDRA 2N,  
NERIG 2N, NIFAL 2N,  
RILEP 2N, RUSNE 2N

**WARNING:**  
1. The minimum climb gradients are as follows  
(required due to the airspace limitation):  
- ITVUL 2N, NEDRA 2N, NERIG 2N, NIFAL 2N,  
RILEP 2N, RUSNE 2N - 6.4% up to FL080;  
- NEDRA 2W - 4.6% up to FL090;  
- NIFAL 2W - 4.2% up to FL090;  
- RILEP 2W - 4.1% up to FL090.  
2. There are close-in obstacles.

TOWER 127.200  
APPROACH 126.000

BEARINGS AND TRACKS ARE MAGNETIC  
ALTITUDES, HEIGHTS AND ELEVATIONS ARE IN METRES  
DISTANCES ARE IN KILOMETRES