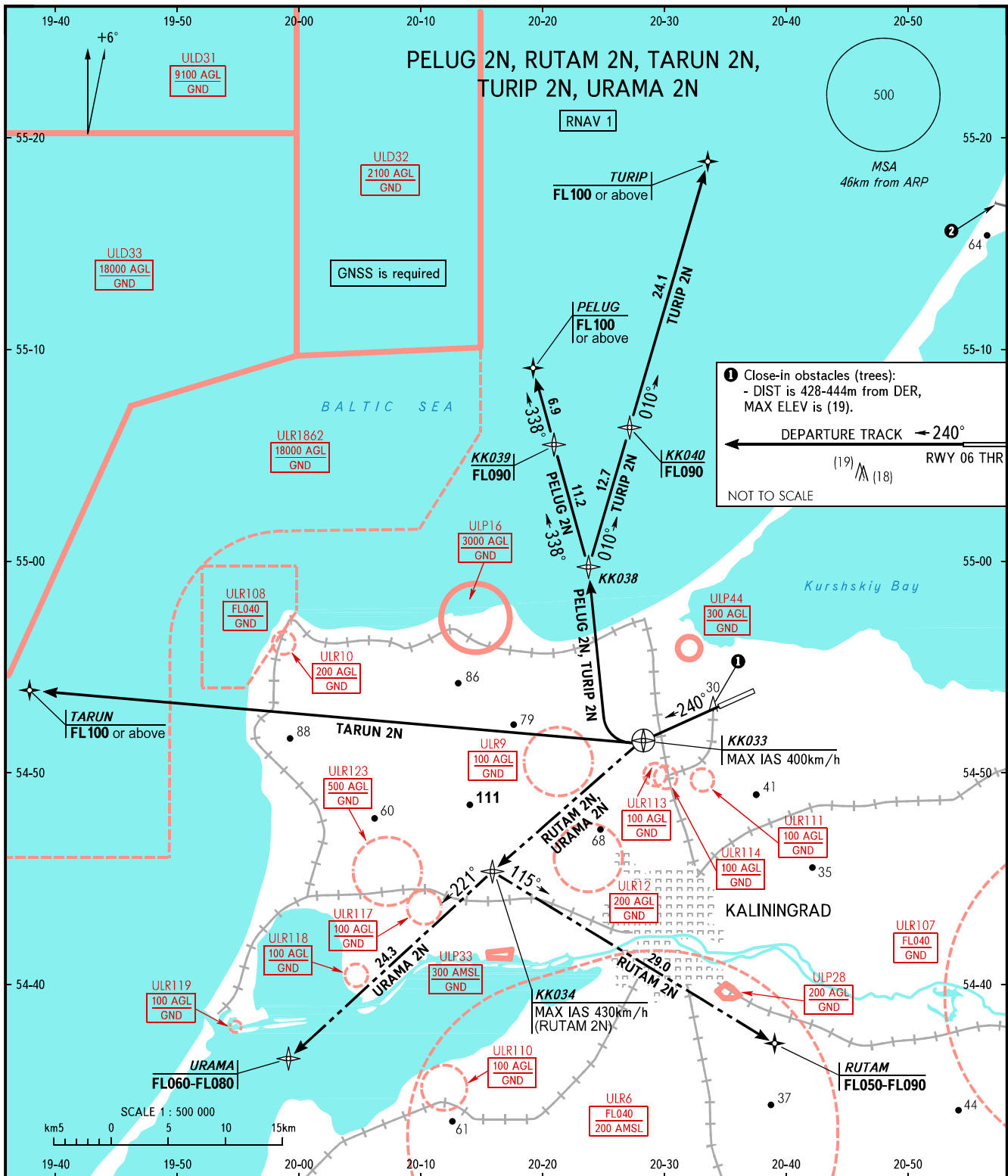


STANDARD DEPARTURE CHART  
INSTRUMENT (SID) - ICAO

TRANSITION  
HEIGHT : (1000)

KALININGRAD, RUSSIA  
KHRABROVO  
RNAV RWY 24



① Close-in obstacles (trees):  
- DIST is 428-444m from DER,  
MAX ELEV is (19).  
DEPARTURE TRACK ← 240°  
RWY 06 THR  
NOT TO SCALE

TOWER 127.200  
APPROACH 126.000

**WARNING:**  
1. The minimum climb gradients are as follows  
(required due to airspace limitation):  
- PELUG 2N - 7.4% up to FL090;  
- TARUN 2N - 4.9% up to FL100;  
- TURIP 2N - 7.2% up to FL090.  
2. There are close-in obstacles.  
② State border between  
RUSSIA and LITHUANIA.

BEARINGS AND TRACKS ARE MAGNETIC  
ALTITUDES, HEIGHTS AND ELEVATIONS ARE IN METRES  
DISTANCES ARE IN KILOMETRES

CHANGE: ULR116 withdrawn, ULP44