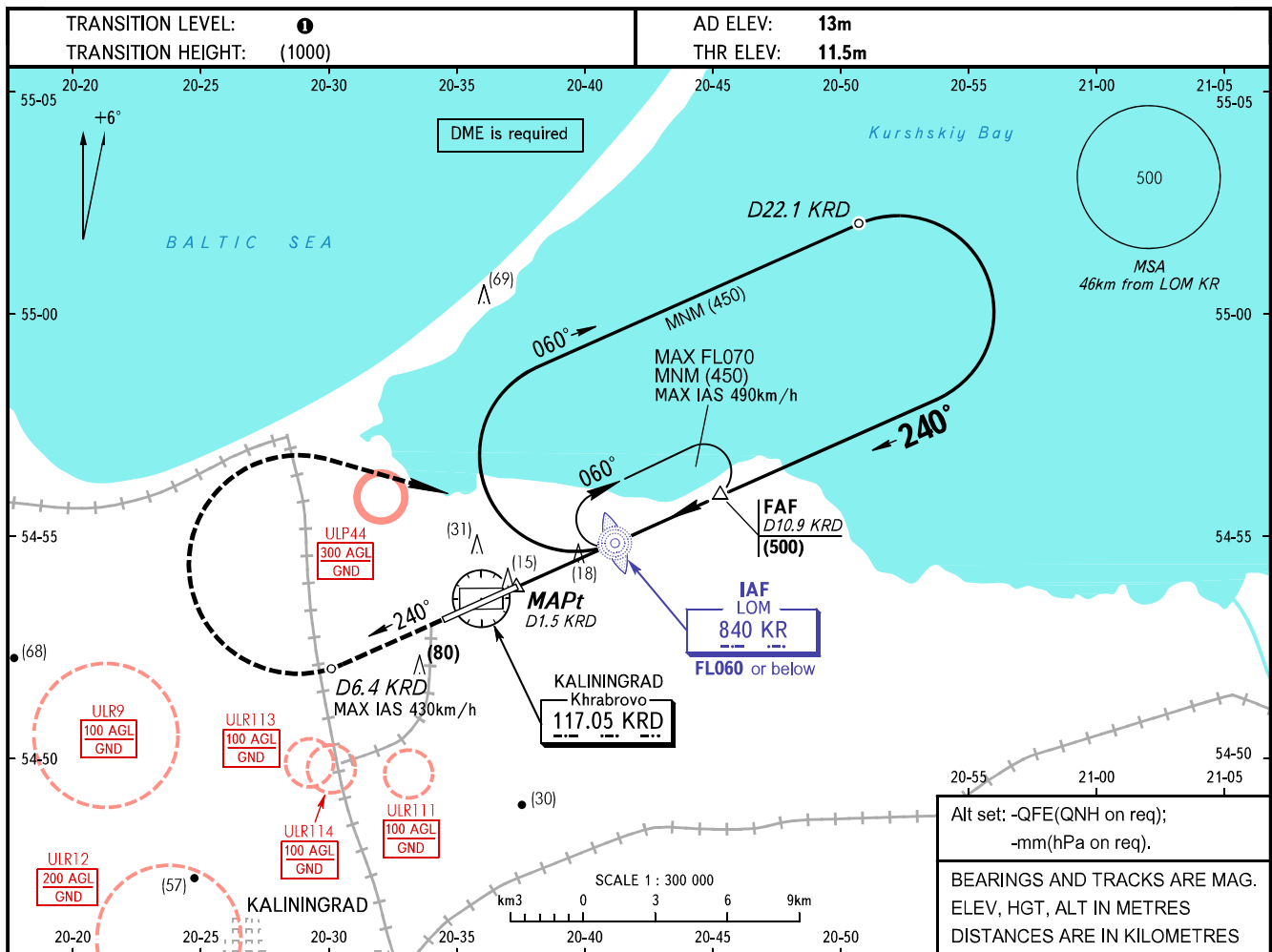


**INSTRUMENT  
APPROACH  
CHART - ICAO**

TOWER **127.200**

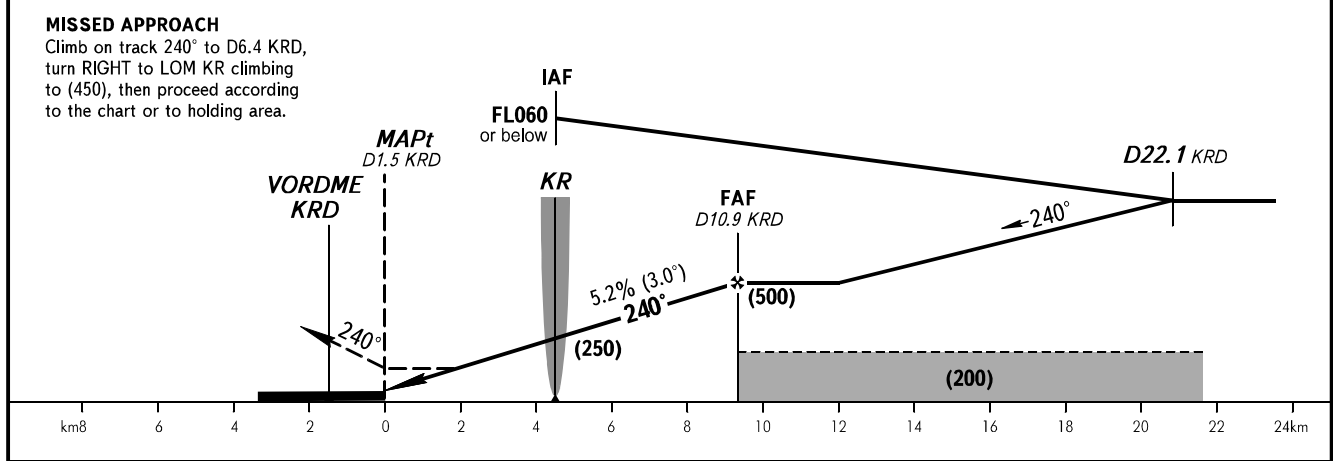
**KALININGRAD, RUSSIA**  
KHRABROVO  
NDB Y RWY 24



Alt set: -QFE(QNH on req);  
-mm(hPa on req).

BEARINGS AND TRACKS ARE MAG.  
ELEV, HGT, ALT IN METRES  
DISTANCES ARE IN KILOMETRES

DME KR	4.0	6.0	8.0	10.0
HEIGHT	(140)	(245)	(350)	(455)



OCA(H)	A	B	C	D						
Straight-in Approach	120(105)	120(105)	120(105)	120(105)						
Circling	185(170)	185(170)	260(250)	260(250)						
Visual manoeuvring to the south of the AD is PROHIBITED ②										
GROUND SPEED	km/h	150	180	210	240	270	300	330	360	390
RATE OF DESCENT	m/s	2.2	2.6	3.0	3.5	3.9	4.3	4.8	5.2	5.6

① TRANSITION LEVEL:  
- FL050 when QFE is 742mm mercury column or above;  
- FL060 when QFE is 741-715mm mercury column;  
- FL070 when QFE is less than 715mm mercury column.

**WARNING**  
MAPt at D1.5 KR. Timing not authorized for defining MAPt.