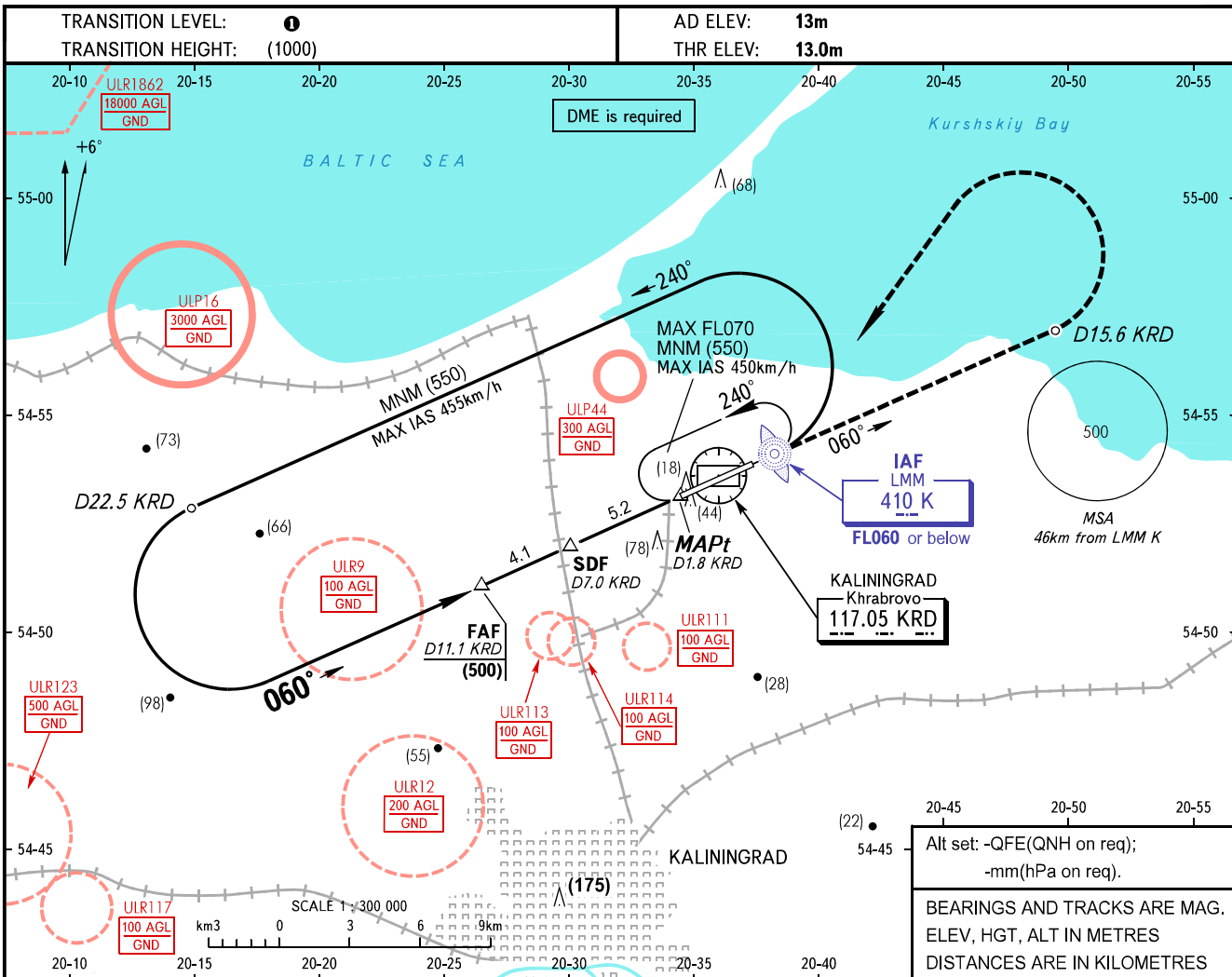


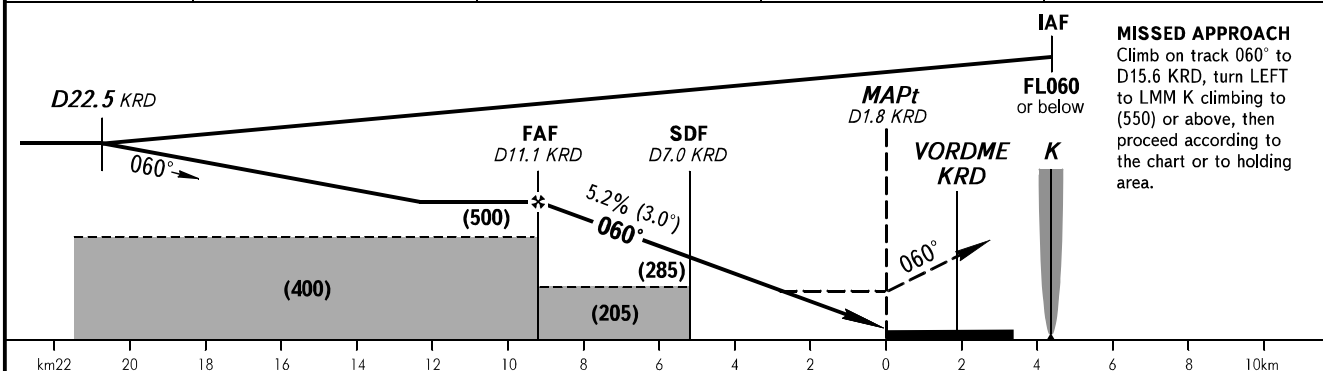
**INSTRUMENT
APPROACH
CHART - ICAO**

TOWER	127.200
-------	---------

**KALININGRAD, RUSSIA
KHRABROVO
NDB RWY 06**

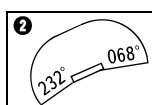


DME KRD	11.1	9.0	7.0	5.0
HEIGHT	(500)	(390)	(285)	(180)



MISSED APPROACH
Climb on track 060° to D15.6 KRD, turn LEFT to LMM K climbing to (550) or above, then proceed according to the chart or to holding area.

OCA(H)		A	B	C	D	1 TRANSITION LEVEL: - FL050 when QFE is 742mm mercury column or above; - FL060 when QFE is 741-715mm mercury column; - FL070 when QFE is less than 715mm mercury column. WARNING: 1. MAPt at D1.8 KRD. Timing not authorized for defining MAPt. 2. The procedure is AVBL if the flight crew is cleared to cross ULP16 and ULR6 (during its activity) or by coordination with ATS unit.				
Straight-in Approach	With SDF	170(155)	170(155)	170(155)	170(155)					
	WO SDF	215(205)	215(205)	215(205)	215(205)					
Circling		215(205)	215(205)	260(250)	260(250)					
Visual manoeuvring to the south of the AD is PROHIBITED 2										
GROUND SPEED	km/h	150	180	210	240	270	300	330	360	390
RATE OF DESCENT	m/s	2.2	2.6	3.0	3.5	3.9	4.3	4.8	5.2	5.6



CHANGE: ULR116 withdrawn, ULP4