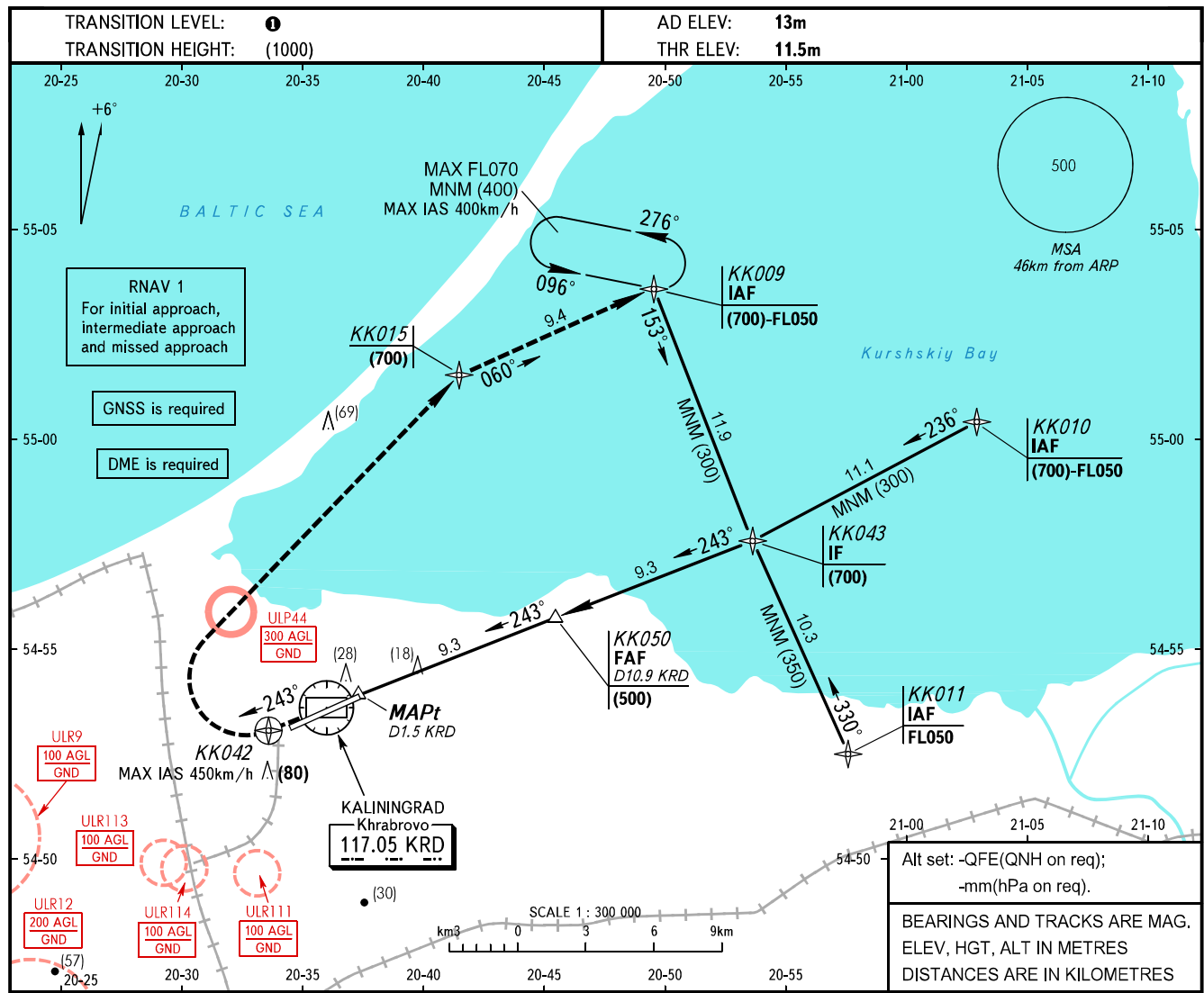


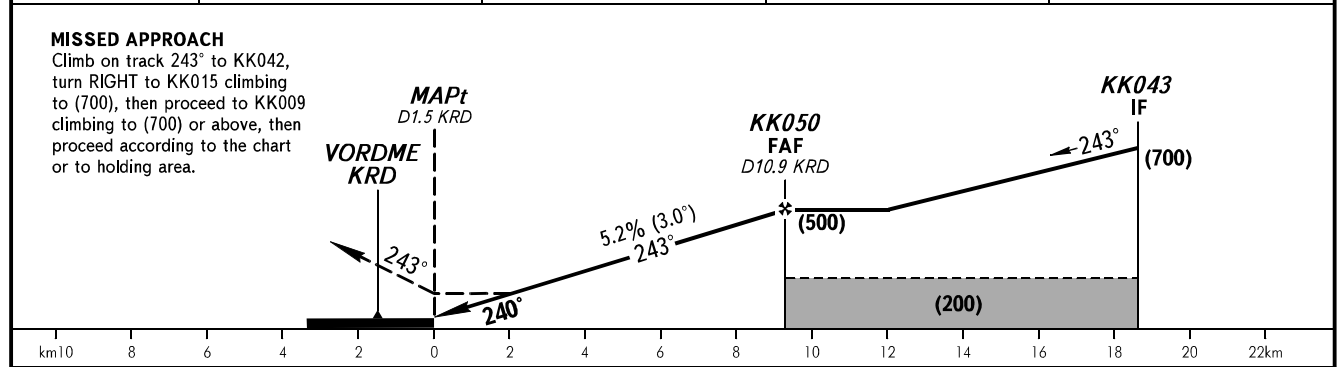
**INSTRUMENT
APPROACH
CHART - ICAO**

TOWER **127.200**

KALININGRAD, RUSSIA
KHRABROVO
VOR X RWY 24



DME KR D	4.0	6.0	8.0	10.0
HEIGHT	(140)	(245)	(350)	(455)



OCA(H)	A	B	C	D	① TRANSITION LEVEL: - FL050 when QFE is 742mm mercury column or above; - FL060 when QFE is 741-715mm mercury column; - FL070 when QFE is less than 715mm mercury column. WARNING: 1. Final approach track is offset by 3° from the RWY centre line. 2. MAPt at D1.5 KR D. Timing not authorized for defining MAPt.					
Straight-in Approach	115(105)	115(105)	115(105)	115(105)						
Circling	185(170)	185(170)	260(250)	260(250)						
Visual manoeuvring to the south of the AD is PROHIBITED ②										
GROUND SPEED	km/h	150	180	210	240	270	300	330	360	390
RATE OF DESCENT	m/s	2.2	2.6	3.0	3.5	3.9	4.3	4.8	5.2	5.6

CHANGE: ULP44