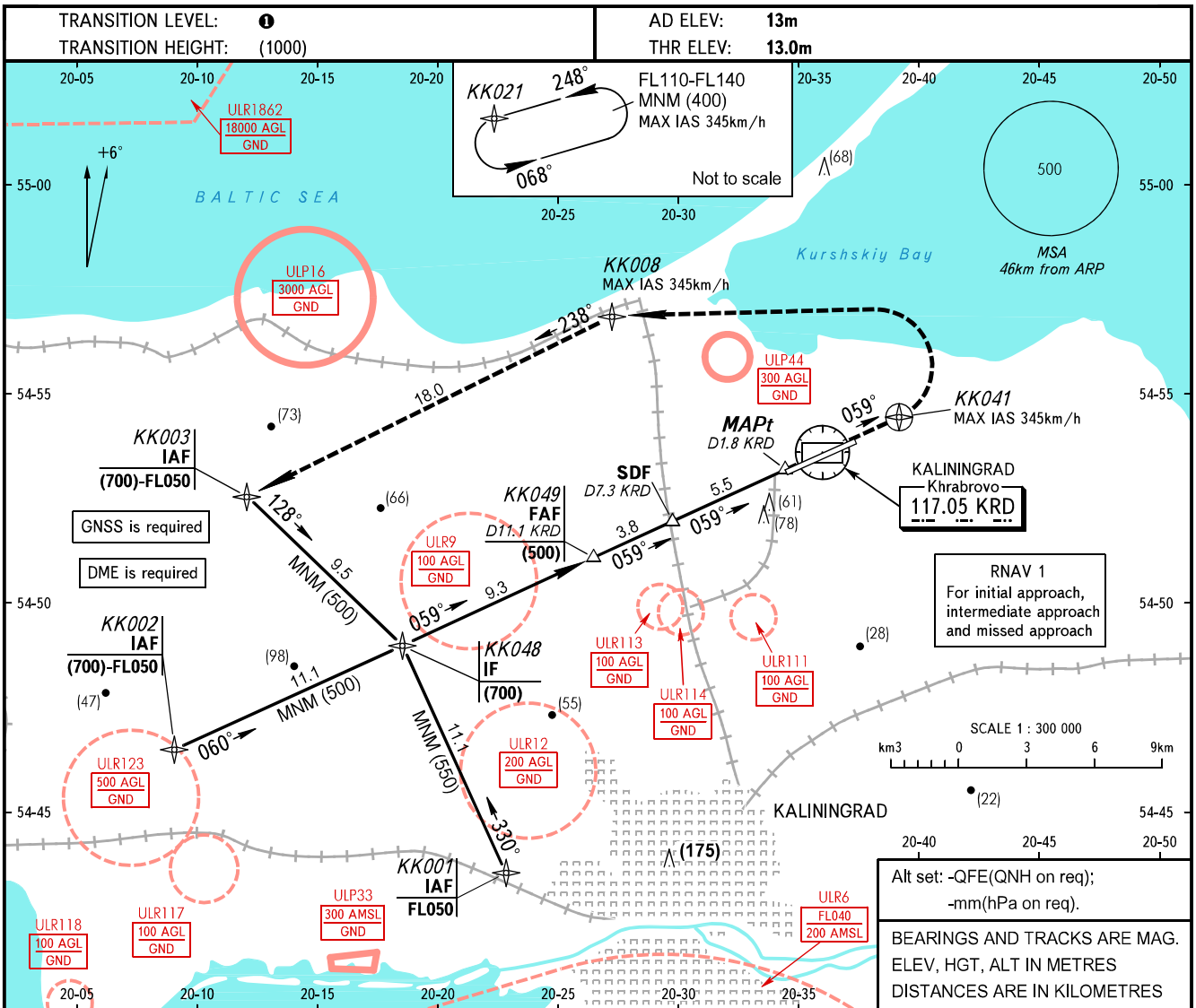


**INSTRUMENT
APPROACH
CHART - ICAO**

TOWER **127.200**

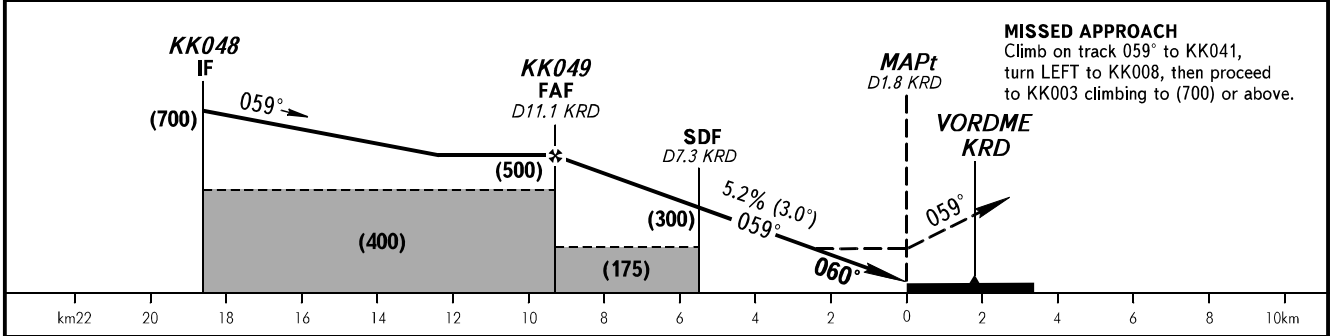
**KALININGRAD, RUSSIA
KHRABROVO
VOR X RWY 06**



Alt set: -QFE(QNH on req);
-mm(hPa on req).

BEARINGS AND TRACKS ARE MAG. ELEV, HGT, ALT IN METRES DISTANCES ARE IN KILOMETRES

DME KRD	11.1	9.0	7.0	5.0
HEIGHT	(500)	(390)	(285)	(180)

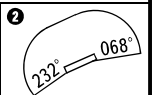


MISSED APPROACH
Climb on track 059° to KK041, turn LEFT to KK008, then proceed to KK003 climbing to (700) or above.

OCA(H)		A	B	C	D					
Straight-in Approach	With SDF	140(125)	140(125)	140(125)	140(125)					
	WO SDF	190(175)	190(175)	190(175)	190(175)					
Circling		190(170)	190(170)	260(250)	260(250)					
Visual manoeuvring to the south of the AD is PROHIBITED ②										
GROUND SPEED	km/h	150	180	210	240	270	300	330	360	390
RATE OF DESCENT	m/s	2.2	2.6	3.0	3.5	3.9	4.3	4.8	5.2	5.6

① TRANSITION LEVEL:
- FL050 when QFE is 742mm mercury column or above;
- FL060 when QFE is 741-715mm mercury column;
- FL070 when QFE is less than 715mm mercury column.

WARNING:
1. Final approach track is offset by 1° from the RWY centre line.
2. MAPt at D1.8 KRD. Timing not authorized for defining MAPt.



CHANGE: ULR116 withdrawn, ULP44