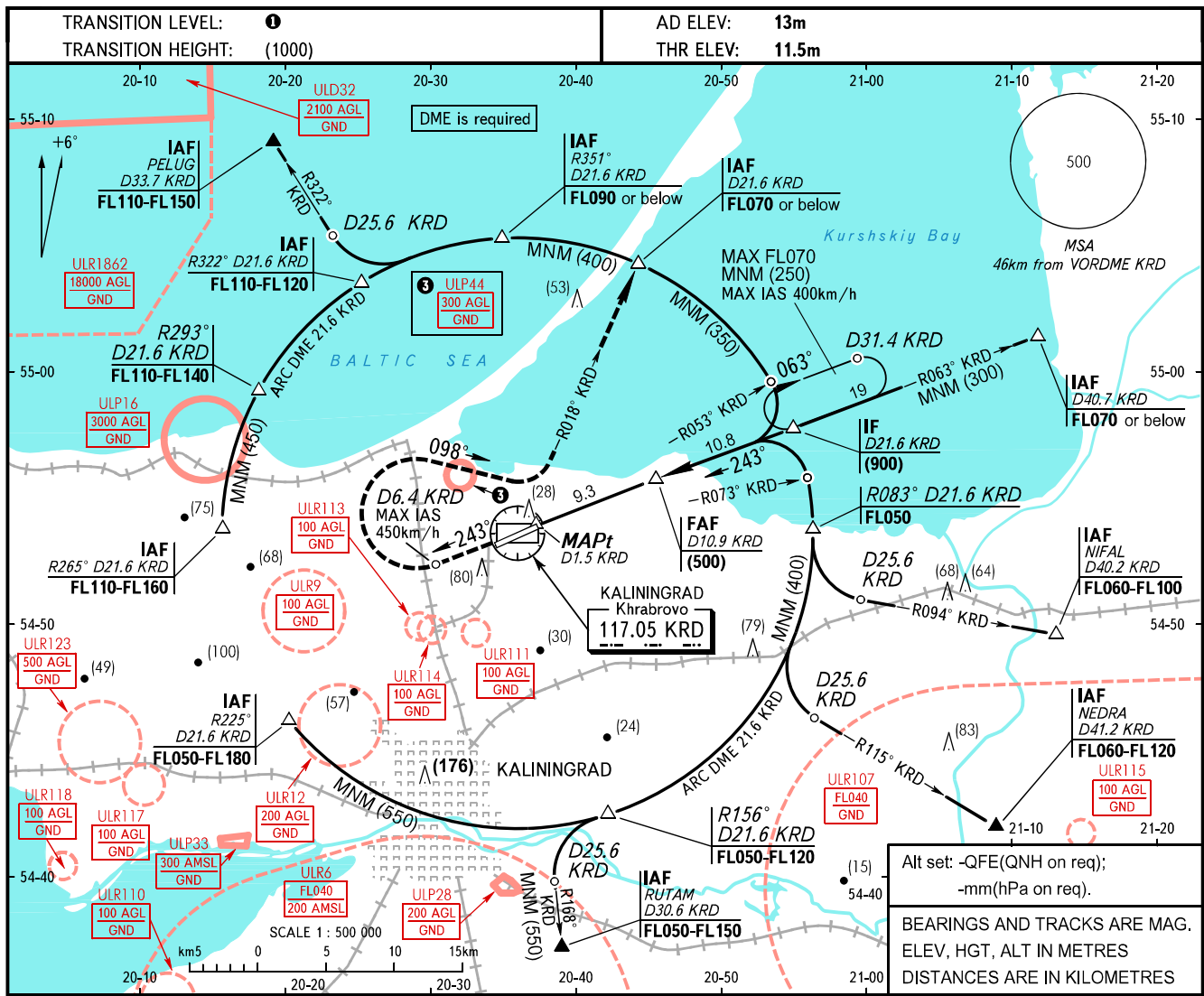


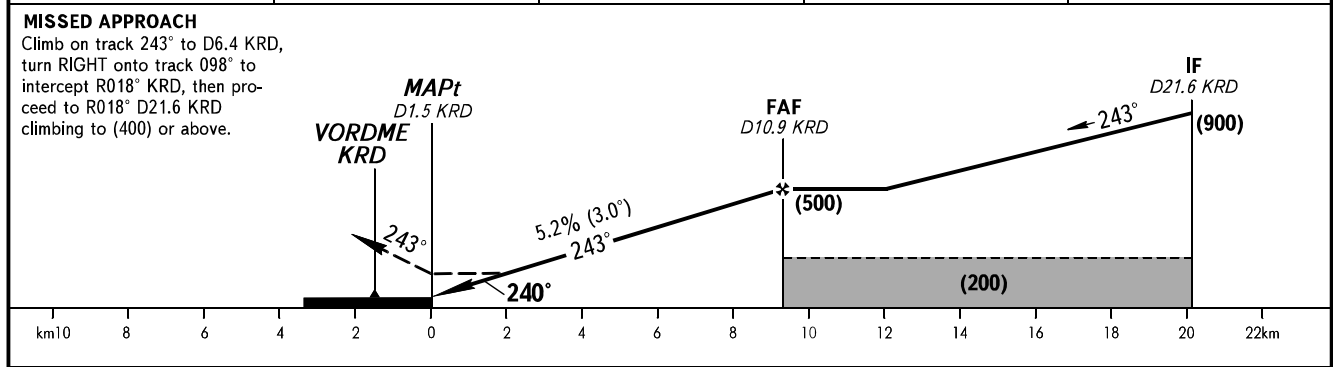
INSTRUMENT  
APPROACH  
CHART - ICAO

TOWER 127.200

KALININGRAD, RUSSIA  
KHRABROVO  
VOR Z RWY 24



|         |       |       |       |       |
|---------|-------|-------|-------|-------|
| DME KRD | 4.0   | 6.0   | 8.0   | 10.0  |
| HEIGHT  | (140) | (245) | (350) | (455) |



| OCA(H)               | A   | B        | C        | D        |     |     |     |     |     |     |
|----------------------|---|----------|----------|----------|-----|-----|-----|-----|-----|-----|
| Straight-in Approach | 115(105)  | 115(105) | 115(105) | 115(105) |     |     |     |     |     |     |
| Circling             | 185(170)  | 185(170) | 260(250) | 260(250) |     |     |     |     |     |     |
|                      | Visual manoeuvring to the south of the AD is PROHIBITED |          |          |          |     |     |     |     |     |     |
| GROUND SPEED         | km/h  | 150      | 180      | 210      | 240 | 270 | 300 | 330 | 360 | 390 |
| RATE OF DESCENT      | m/s   | 2.2      | 2.6      | 3.0      | 3.5 | 3.9 | 4.3 | 4.8 | 5.2 | 5.6 |

**1** TRANSITION LEVEL:  
- FL050 when QFE is 742mm mercury column or above;  
- FL060 when QFE is 741-715mm mercury column;  
- FL070 when QFE is less than 715mm mercury column.

**WARNING:**  
1. Final approach track is offset by 3° from the RWY centre line.  
2. MAPt at D1.5 KRD. Timing not authorized for defining MAPt.