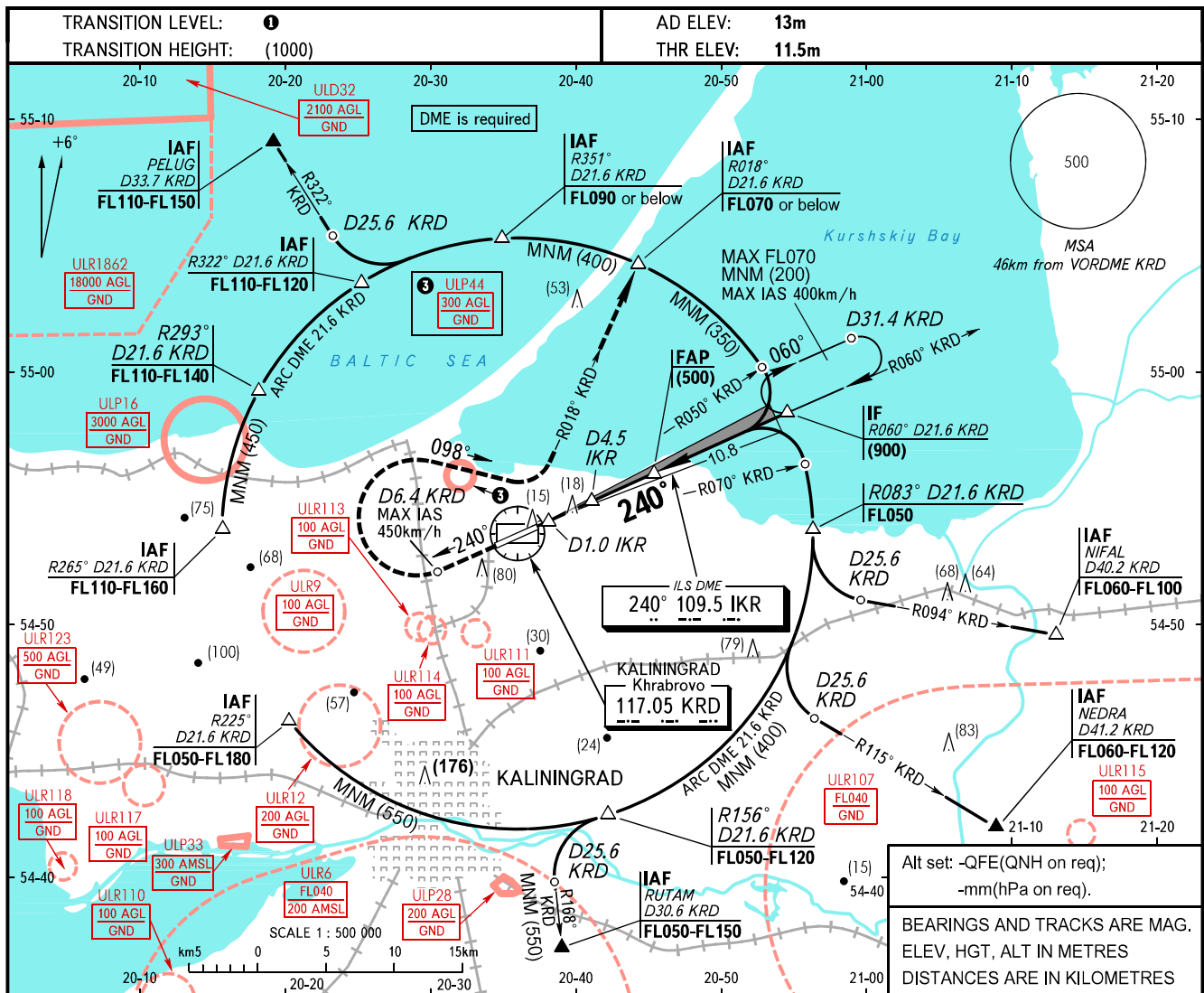


INSTRUMENT  
APPROACH  
CHART - ICAO

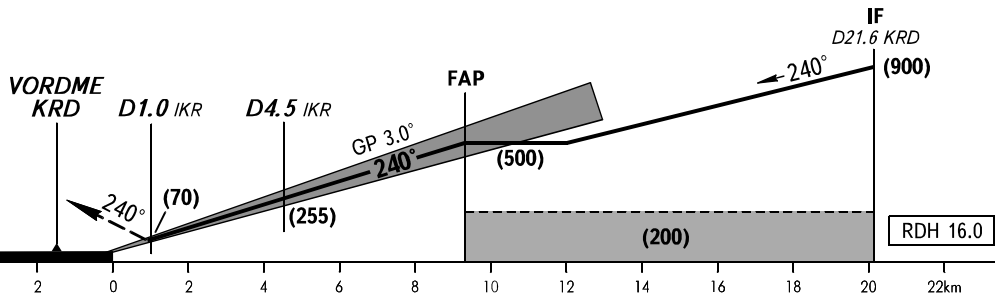
KALININGRAD, RUSSIA  
KHRABROVO  
ILS X RWY 24 CAT I/II

TOWER 127.200



**MISSED APPROACH**

Climb on track 240° to D6.4 KRD, turn RIGHT onto track 098° to intercept R018° KRD, then proceed to R018° D21.6 KRD climbing to (400) or above.



OCA(H)		A	B	C	D						
Straight-in Approach	CAT I	54(42)	57(45)	61(49)	65(53)						
	CAT II	27(15)	30(18)	34(22)	38(26)						
Circling		185(170)	185(170)	260(250)	260(250)						
Visual manoeuvring to the south of the AD is PROHIBITED ②											
GROUND SPEED	km/h	150	180	210	240	270	300	330	360	390	
RATE OF DESCENT	m/s		2.2	2.6	3.0	3.5	3.9	4.3	4.8	5.2	5.6

① TRANSITION LEVEL:  
- FL050 when QFE is 742mm mercury column or above;  
- FL060 when QFE is 741-715mm mercury column;  
- FL070 when QFE is less than 715mm mercury column.

**WARNING**  
Zero range of IKR DME is indicated at RWY 24 THR.

