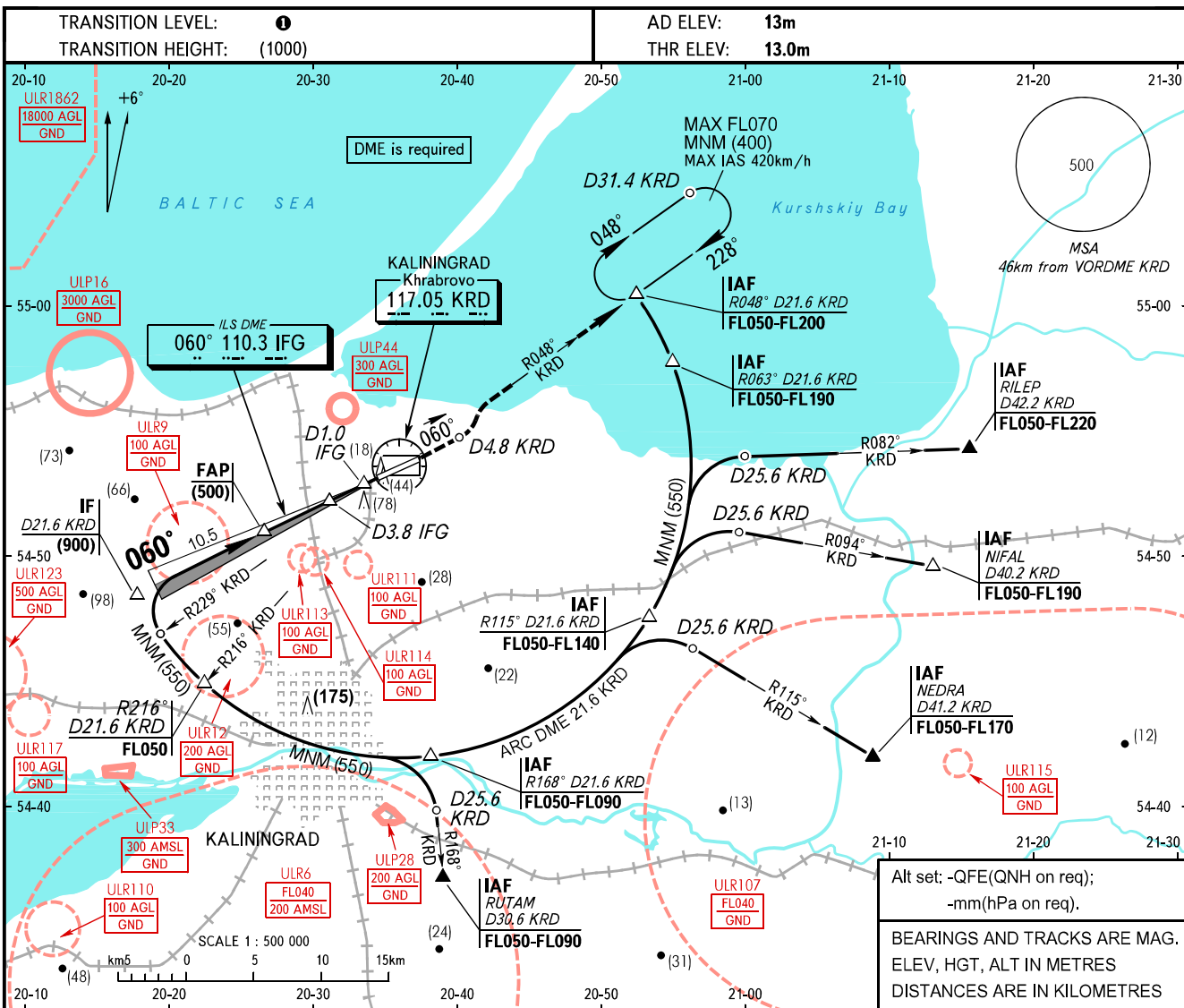


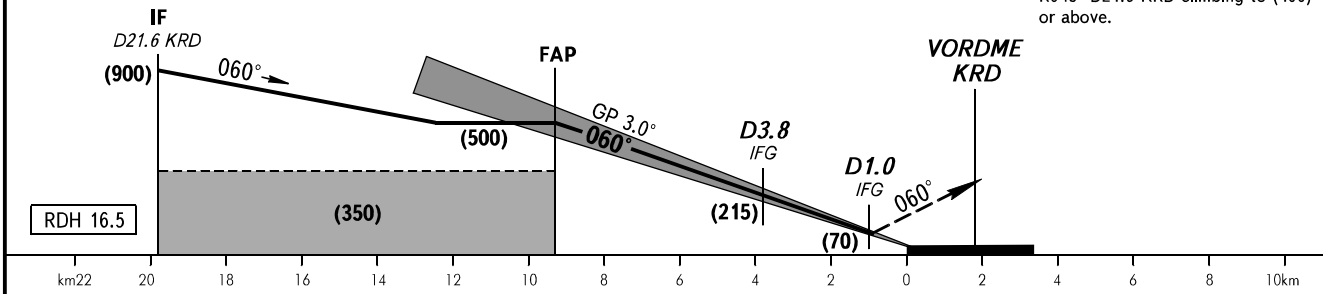
**INSTRUMENT
APPROACH
CHART - ICAO**

TOWER **127.200**

**KALININGRAD, RUSSIA
KHRABROVO
ILS X RWY 06 CAT I**



MISSED APPROACH
Climb on track 060° to D4.8 KRD, turn LEFT to intercept R048° KRD, then proceed to holding area over R048° D21.6 KRD climbing to (400) or above.



OCA(H)		A	B	C	D						
Straight-in Approach	CAT I	57(44)	60(47)	64(51)	68(55)						
Circling		185(170)	185(170)	260(250)	260(250)						
Visual manoeuvring to the south of the AD is PROHIBITED ②											
GROUND SPEED		km/h	150	180	210	240	270	300	330	360	390
RATE OF DESCENT		m/s	2.2	2.6	3.0	3.5	3.9	4.3	4.8	5.2	5.6

① **TRANSITION LEVEL:**
- FLO50 when QFE is 742mm mercury column or above;
- FLO60 when QFE is 741-715mm mercury column;
- FLO70 when QFE is less than 715mm mercury column.

WARNING
Zero range of IFG DME is indicated at RWY 06 THR.

CHANGE: ULR116 withdrawn, ULP44