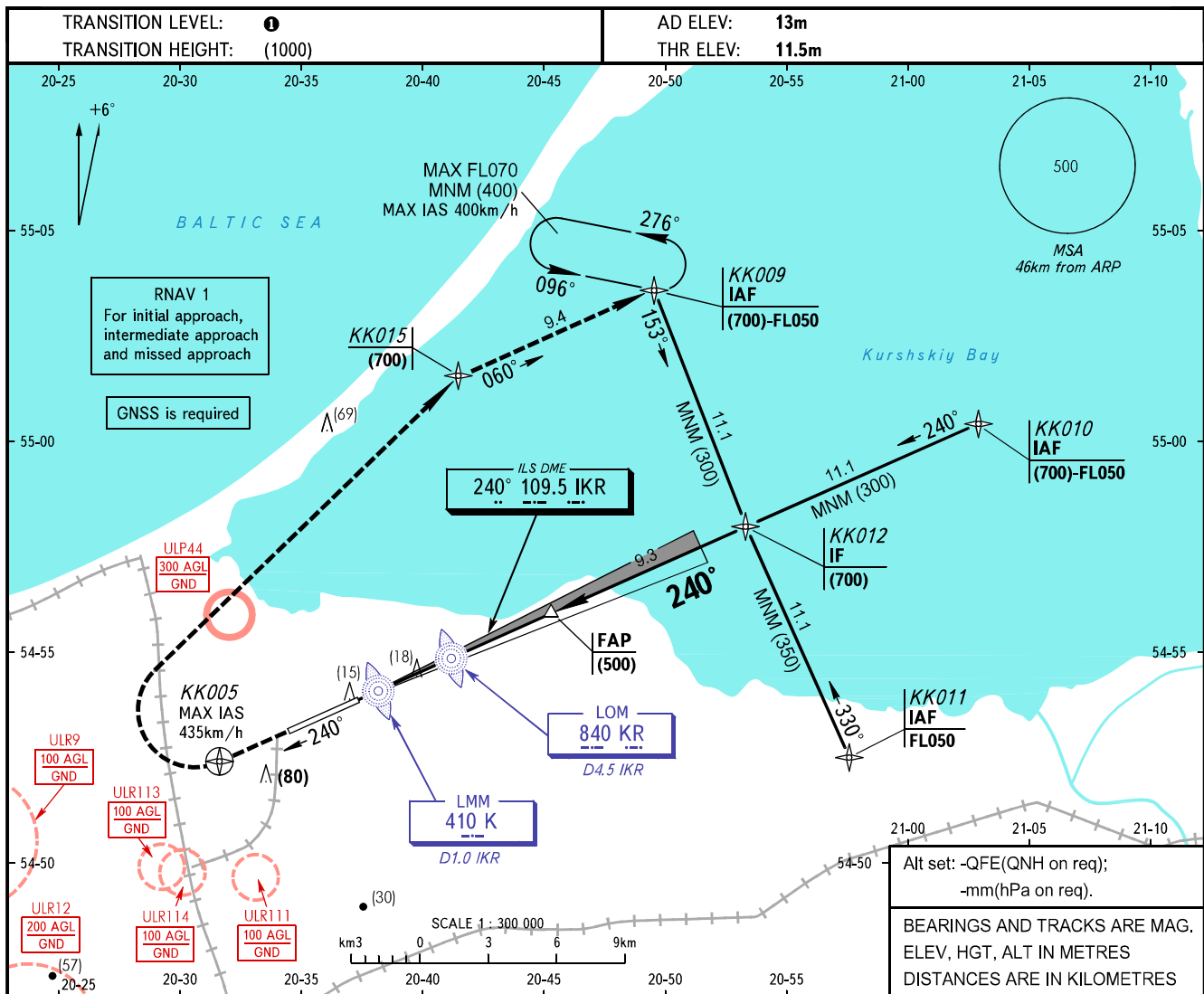


**INSTRUMENT  
APPROACH  
CHART - ICAO**

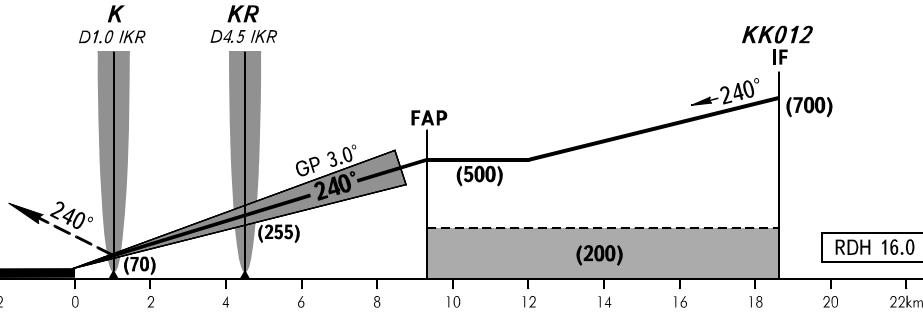
**KALININGRAD, RUSSIA**  
KHRABROVO  
ILS Y RWY 24 CAT I/II

TOWER 127.200



**MISSED APPROACH**

Climb on track 240° to KK005, turn RIGHT to KK015 climbing to (700), then proceed to KK009 climbing to (700) or above, then proceed according to the chart or to holding area.



OCA(H)		A	B	C	D					
Straight-in Approach	<b>CAT I</b>	54(42)	57(45)	61(49)	65(53)					
	<b>CAT II</b>	27(15)	30(18)	34(22)	38(26)					
Circling		185(170)	185(170)	260(250)	260(250)					
	Visual manoeuvring to the south of the AD is PROHIBITED									
GROUND SPEED	km/h	150	180	210	240	270	300	330	360	390
RATE OF DESCENT	m/s	2.2	2.6	3.0	3.5	3.9	4.3	4.8	5.2	5.6

**TRANSITION LEVEL:**  
- FL050 when QFE is 742mm mercury column or above;  
- FL060 when QFE is 741-715mm mercury column;  
- FL070 when QFE is less than 715mm mercury column.

**WARNING**  
Zero range of IKR DME is indicated at RWY 24 THR.

**Scale:** 1 : 300 000