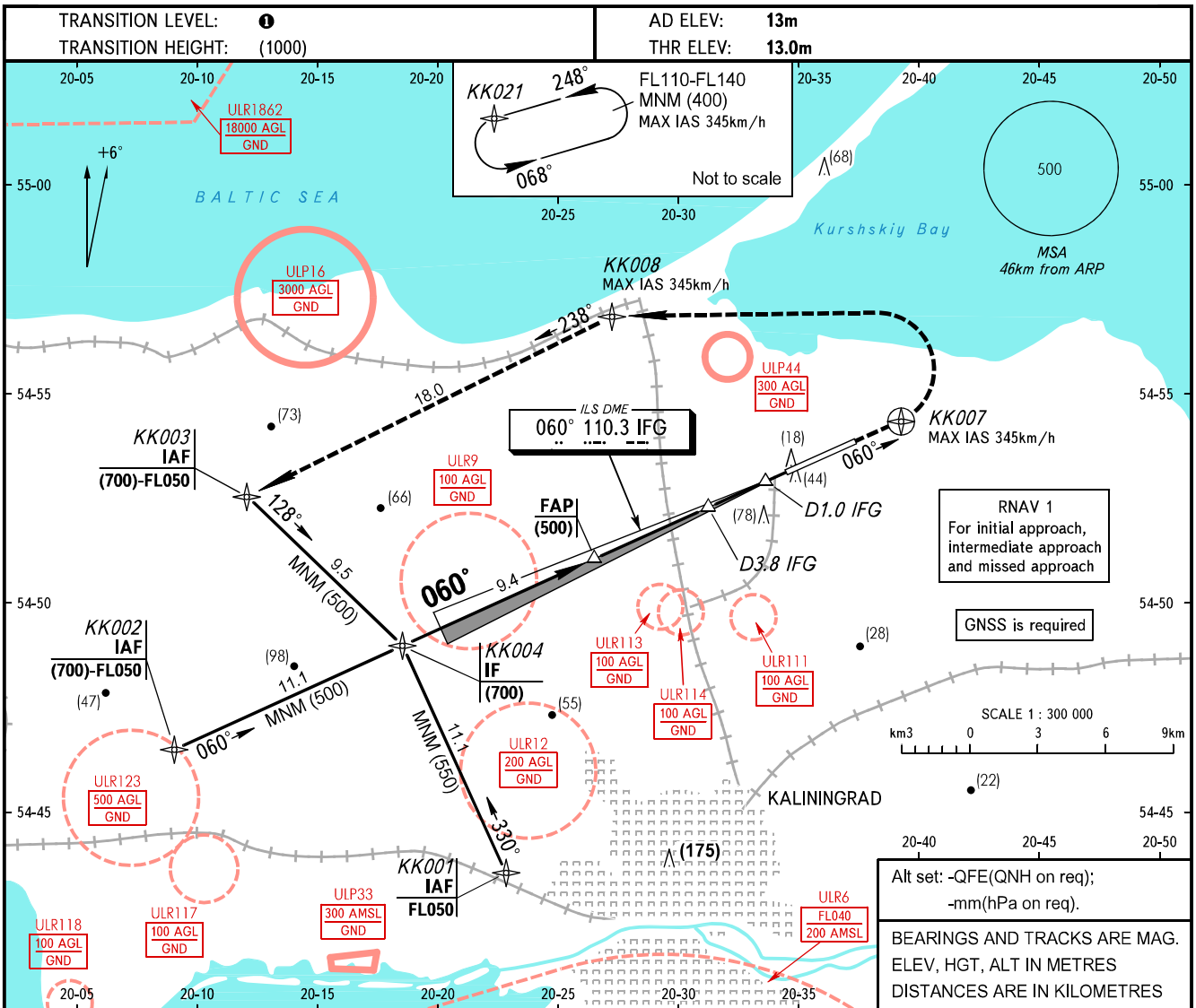


**INSTRUMENT
APPROACH
CHART - ICAO**

TOWER **127.200**

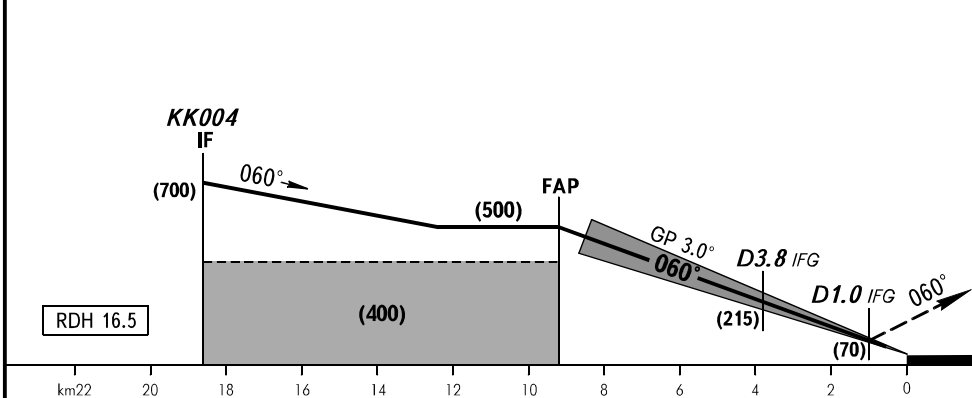
**KALININGRAD, RUSSIA
KHRABROVO
ILS Y RWY 06 CAT I**



Alt set: -QFE(QNH on req);
-mm(hPa on req).

BEARINGS AND TRACKS ARE MAG.
ELEV, HGT, ALT IN METRES
DISTANCES ARE IN KILOMETRES

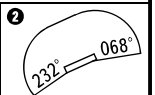
MISSED APPROACH
Climb on track 060° to KK007,
turn LEFT to KK008, then proceed
to KK003 climbing to (700) or above.



OCA(H)		A	B	C	D					
Straight-in Approach	CAT I	57(44)	60(47)	64(51)	68(55)					
Circling		185(170)	185(170)	260(250)	260(250)					
		Visual manoeuvring to the south of the AD is PROHIBITED ②								
GROUND SPEED	km/h	150	180	210	240	270	300	330	360	390
RATE OF DESCENT	m/s	2.2	2.6	3.0	3.5	3.9	4.3	4.8	5.2	5.6

① **TRANSITION LEVEL:**
- FL050 when QFE is 742mm mercury column or above;
- FL060 when QFE is 741-715mm mercury column;
- FL070 when QFE is less than 715mm mercury column.

WARNING
Zero range of IFG DME is indicated
at RWY 06 THR.



CHANGE: ULR116 withdrawn, ULP44