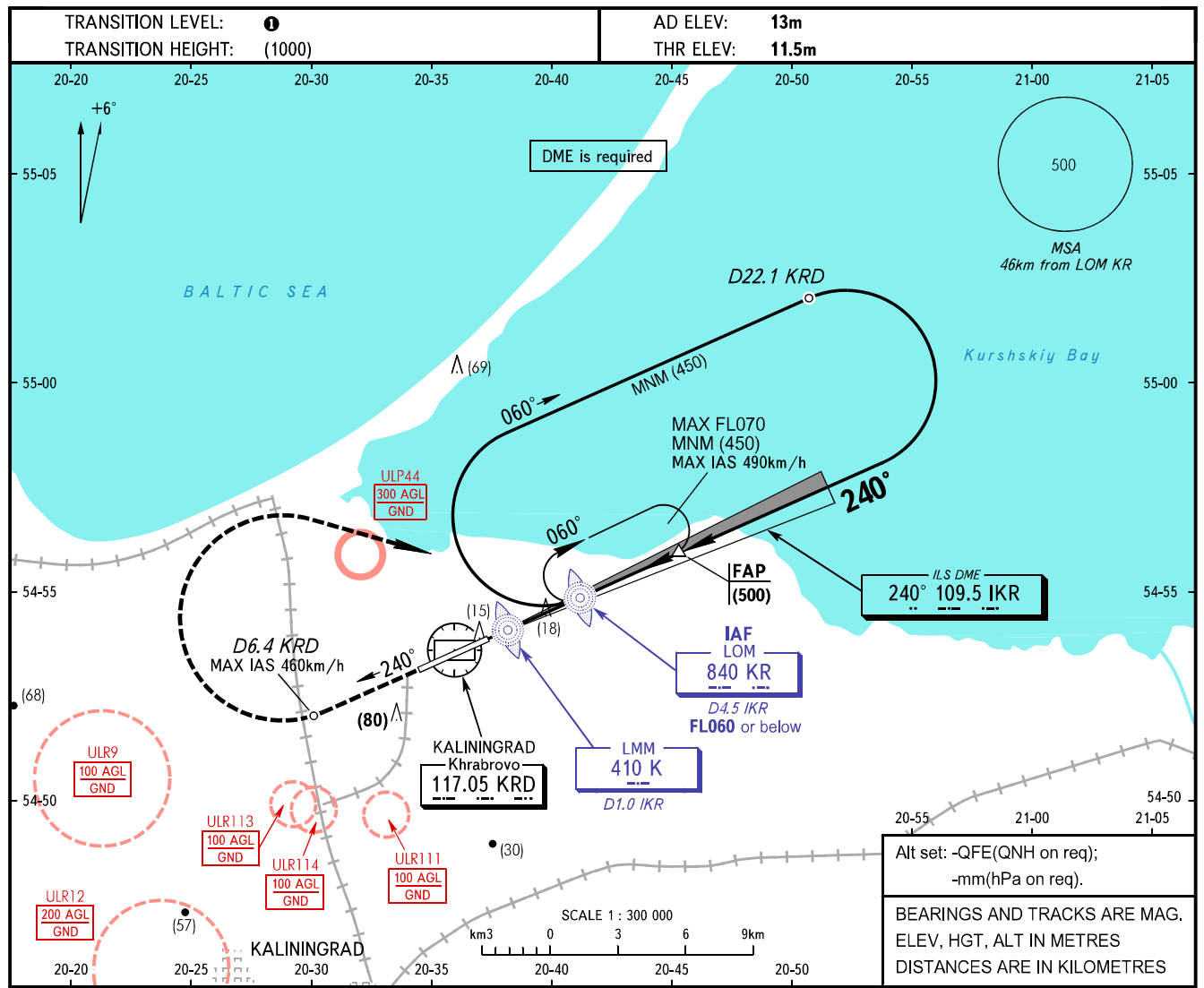


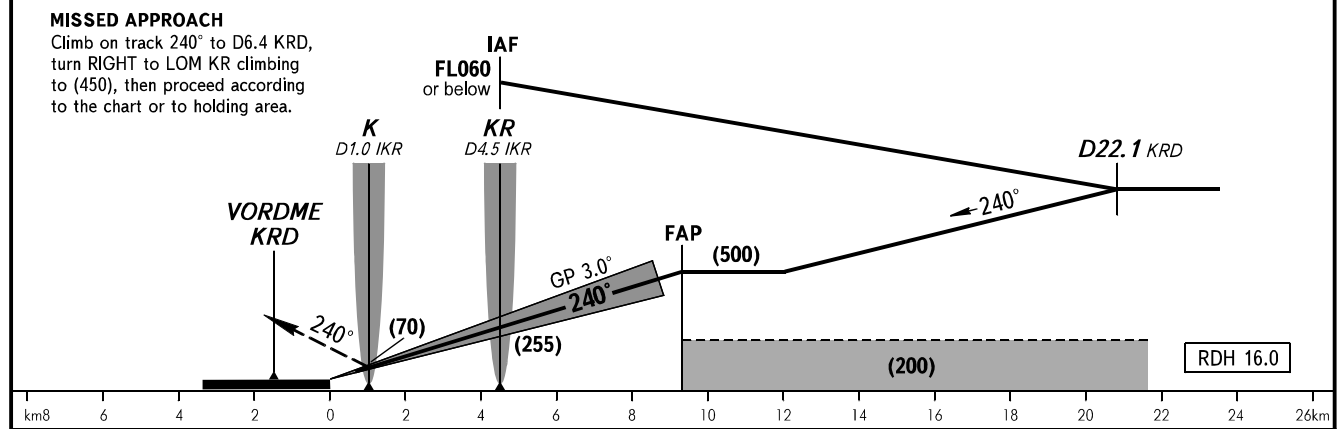
**INSTRUMENT
APPROACH
CHART - ICAO**

TOWER **127.200**

KALININGRAD, RUSSIA
KHRABROVO
ILS Z RWY 24 CAT I/II



MISSED APPROACH
Climb on track 240° to D6.4 KR D, turn RIGHT to LOM KR climbing to (450), then proceed according to the chart or to holding area.



OCA(H)		A	B	C	D					
Straight-in Approach	CAT I	54(42)	57(45)	61(49)	65(53)					
	CAT II	27(15)	30(18)	34(22)	38(26)					
Circling		185(170)	185(170)	260(250)	260(250)					
Visual manoeuvring to the south of the AD is PROHIBITED 2										
GROUND SPEED	km/h	150	180	210	240	270	300	330	360	390
RATE OF DESCENT	m/s	2.2	2.6	3.0	3.5	3.9	4.3	4.8	5.2	5.6

1 **TRANSITION LEVEL:**
- FL050 when QFE is 742mm mercury column or above;
- FL060 when QFE is 741-715mm mercury column;
- FL070 when QFE is less than 715mm mercury column.

WARNING
Zero range of IKR DME is indicated at RWY 24 THR.

2

CHANGE: ULP44