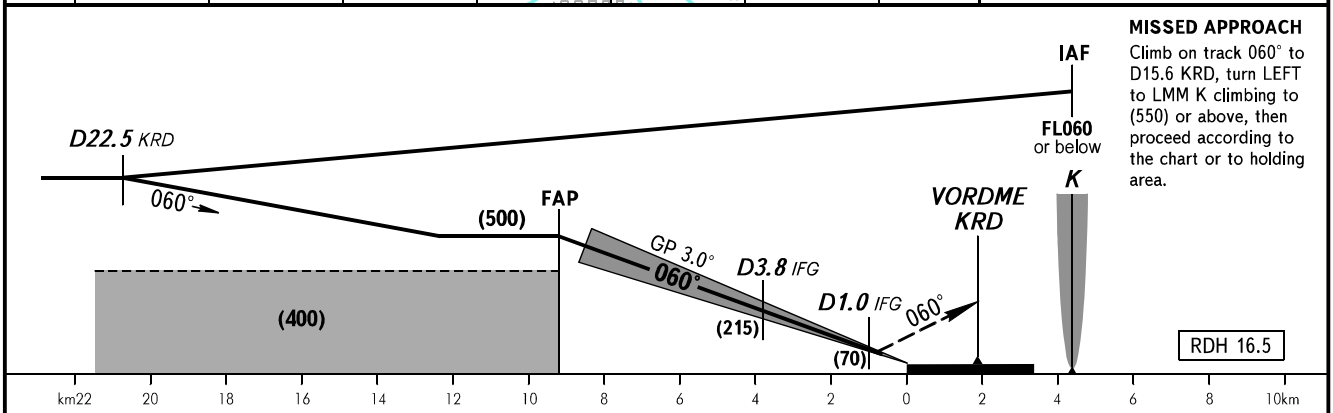
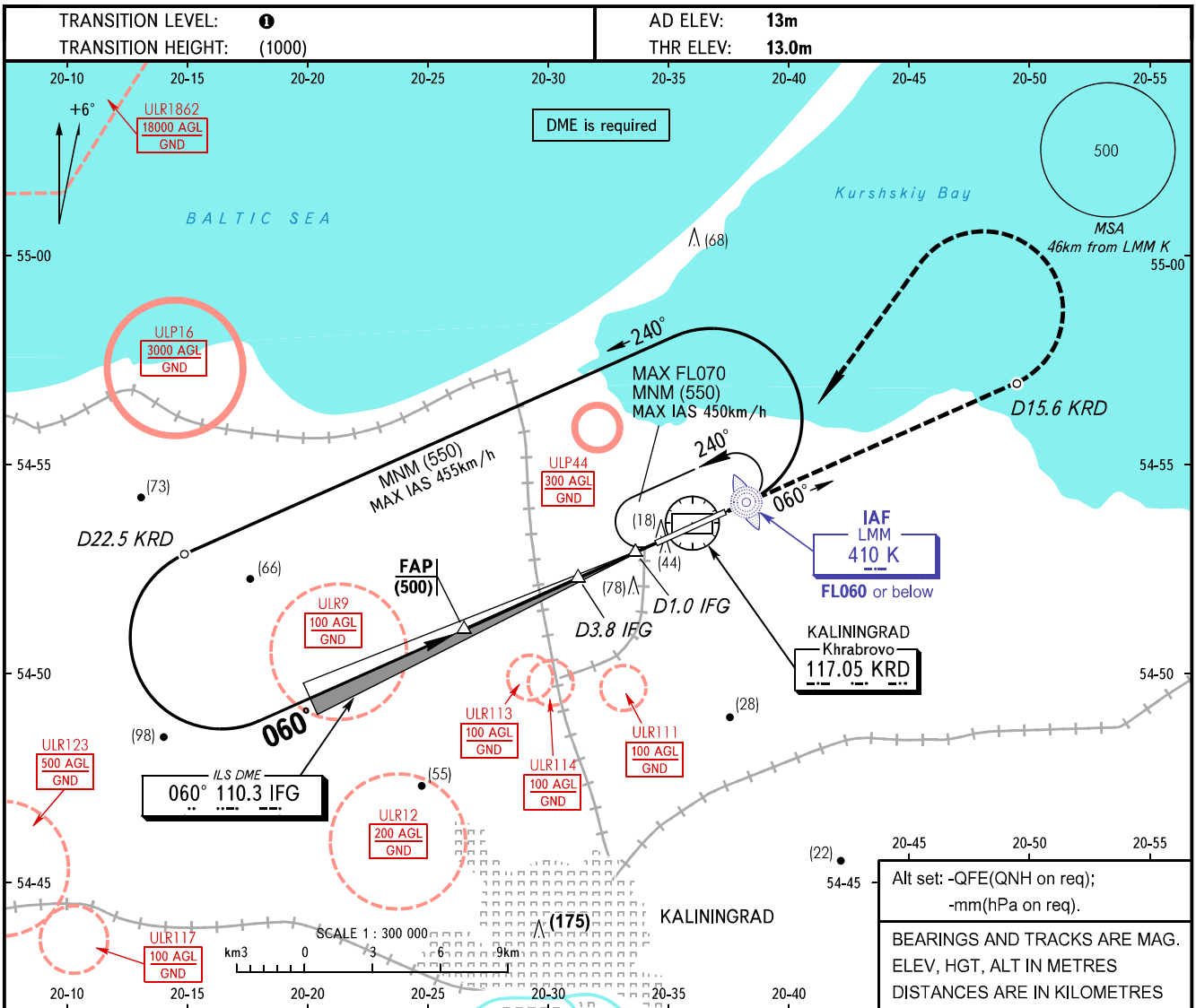


**INSTRUMENT  
APPROACH  
CHART - ICAO**

TOWER	127.200
-------	---------

**KALININGRAD, RUSSIA  
KHRABROVO  
ILS Z RWY 06 CAT I**



OCA(H)		A	B	C	D	<b>1</b> TRANSITION LEVEL: - FL050 when QFE is 742mm mercury column or above; - FL060 when QFE is 741-715mm mercury column; - FL070 when QFE is less than 715mm mercury column.  <b>WARNING:</b> 1. Zero range of IFG DME is indicated at RWY 06 THR. 2. The procedure is AVBL if the flight crew is cleared to cross ULP16 and ULR6 (during its activity) or by coordination with ATS unit.				
Straight-in Approach	CAT I	57(44)	60(47)	64(51)	68(55)					
Circling		185(170)	185(170)	260(250)	260(250)	<b>2</b>				
	Visual manoeuvring to the south of the AD is PROHIBITED									
GROUND SPEED	km/h	150	180	210	240	270	300	330	360	390
RATE OF DESCENT	m/s	2.2	2.6	3.0	3.5	3.9	4.3	4.8	5.2	5.6

CHANGE: ULR116 withdrawn, ULP44