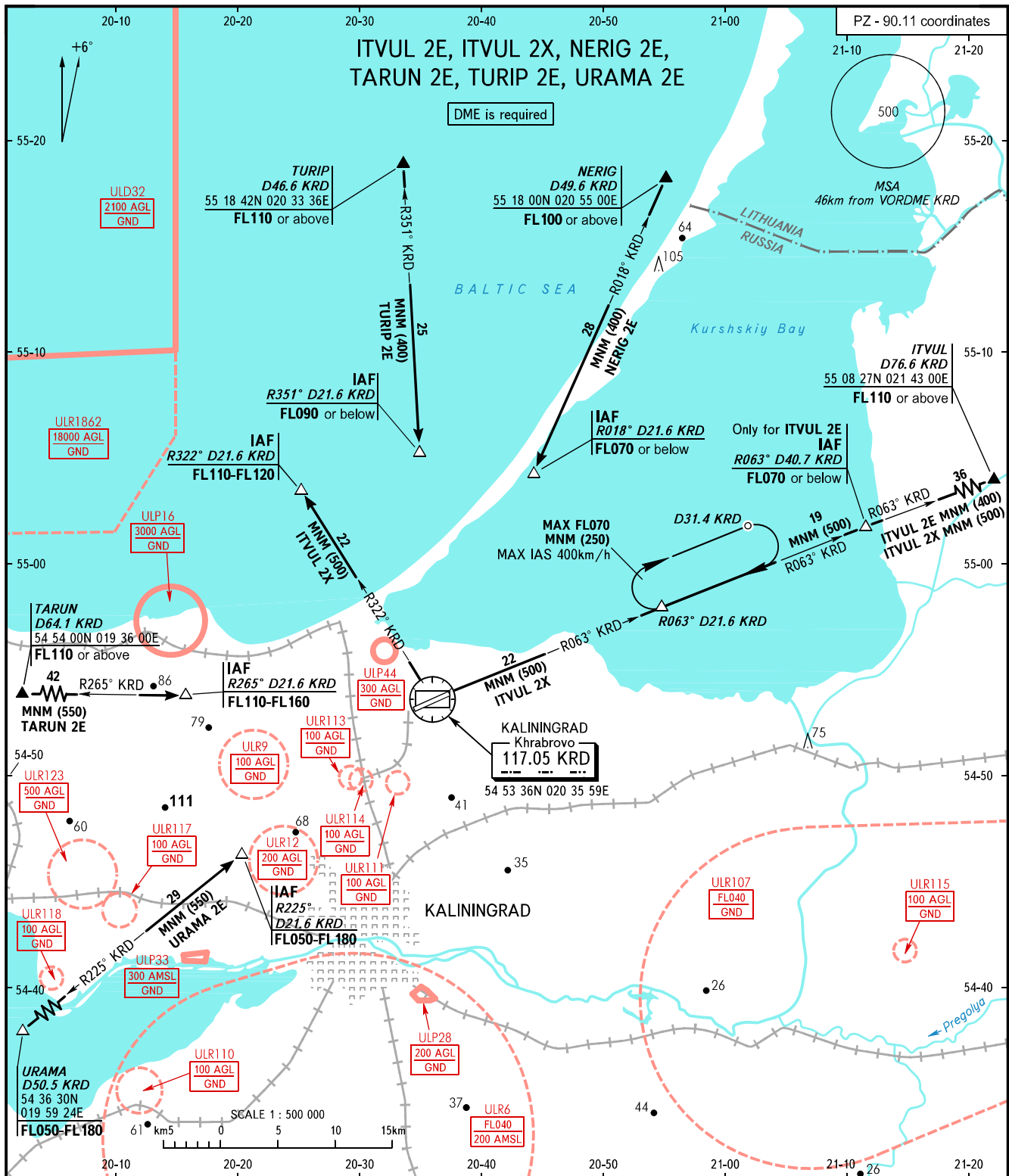


STANDARD ARRIVAL CHART
INSTRUMENT (STAR) - ICAO

KALININGRAD, RUSSIA
KHRABROVO
RWY 24

TRANSITION
LEVEL : 1



APPROACH 126.000
TOWER 127.200

- 1 TRANSITION LEVEL:
- FL050 when QFE is 742mm mercury column or above;
 - FL060 when QFE is 741-715mm mercury column;
 - FL070 when QFE is less than 715mm mercury column.

NOTE
STAR ITVUL 2X is used for ILS approach.

BEARINGS AND TRACKS ARE MAGNETIC
ALTITUDES, HEIGHTS AND ELEVATIONS ARE IN METRES
DISTANCES ARE IN KILOMETRES