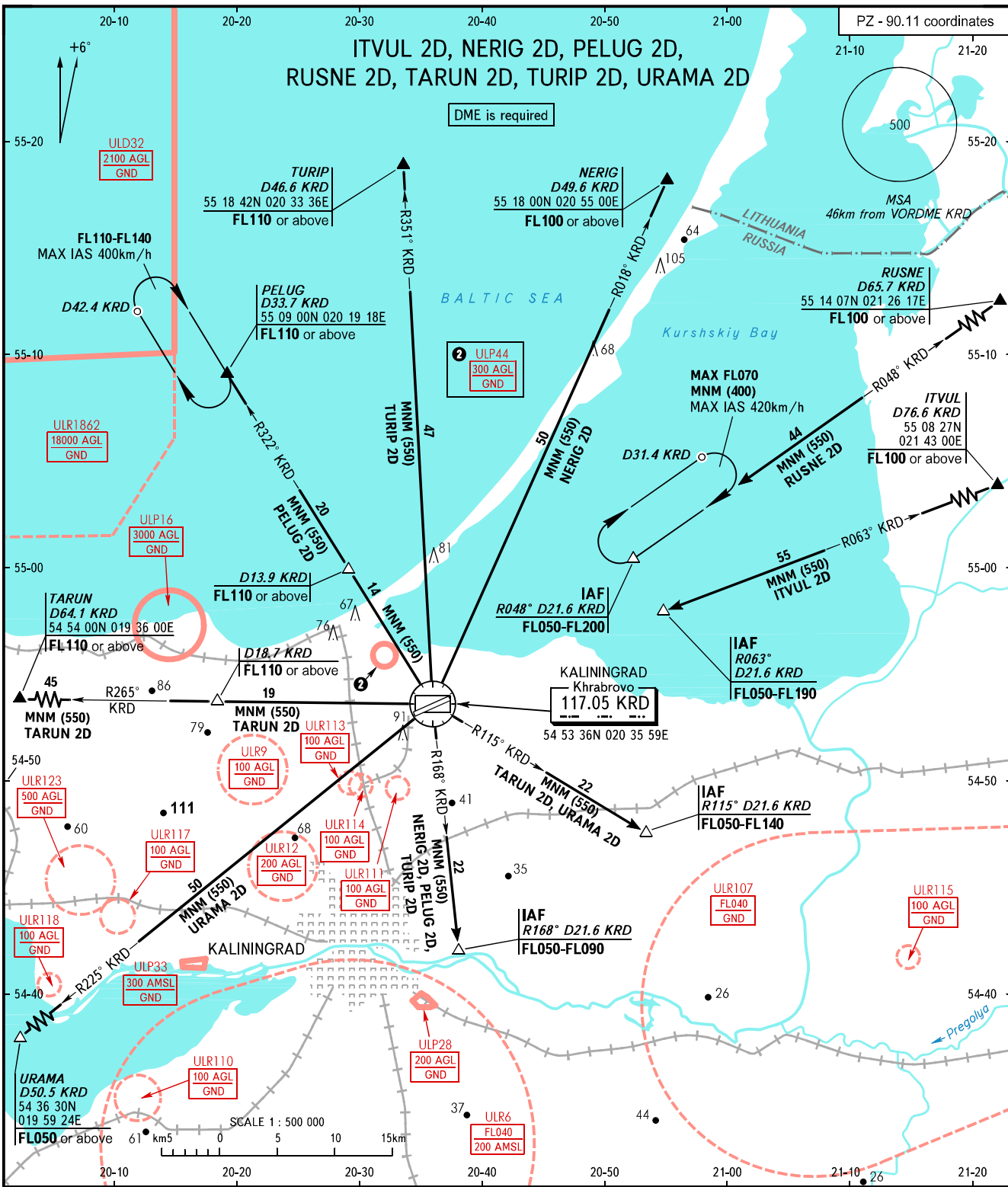


STANDARD ARRIVAL CHART
INSTRUMENT (STAR) - ICAO

KALININGRAD, RUSSIA
KHRABROVO
RWY 06

TRANSITION
LEVEL : 1



APPROACH TOWER	126.000
TOWER	127.200

1 TRANSITION LEVEL:

- FL050 when QFE is 742mm mercury column or above;
- FL060 when QFE is 741-715mm mercury column;
- FL070 when QFE is less than 715mm mercury column.

BEARINGS AND TRACKS ARE MAGNETIC
ALTITUDES, HEIGHTS AND ELEVATIONS ARE IN METRES
DISTANCES ARE IN KILOMETRES

CHANGE: ULR116 withdrawn, ULP44