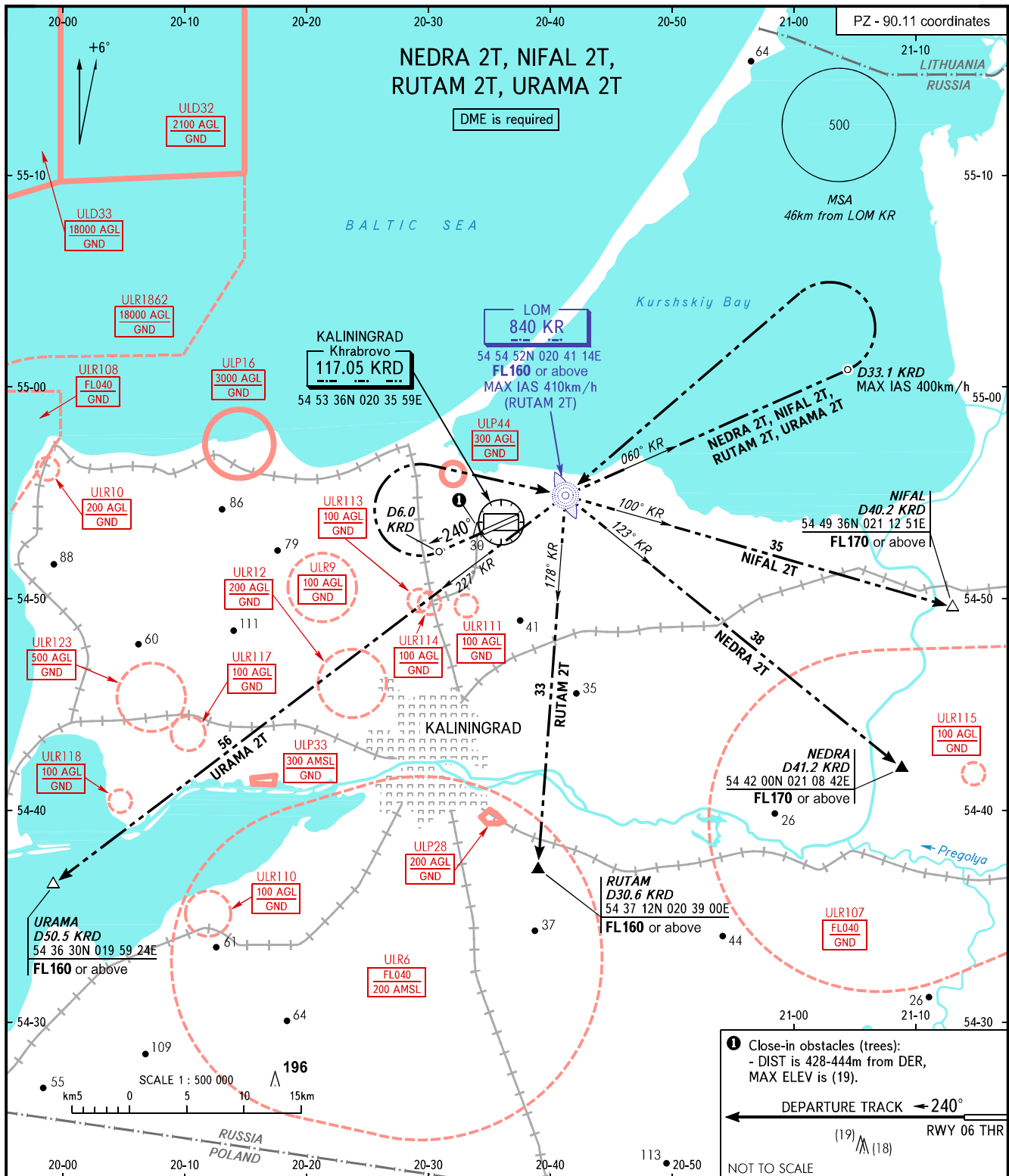


STANDARD DEPARTURE CHART  
INSTRUMENT (SID) - ICAO

TRANSITION  
HEIGHT : (1000)

KALININGRAD, RUSSIA  
KHRABROVO  
RWY 24



TOWER APPROACH 127.200  
126.000

**WARNING:**  
1. The minimum climb gradient is 7.0% up to FL160 (required due to airspace limitation).  
2. There are close-in obstacles.

BEARINGS AND TRACKS ARE MAGNETIC  
ALTITUDES, HEIGHTS AND ELEVATIONS ARE IN METRES  
DISTANCES ARE IN KILOMETRES