

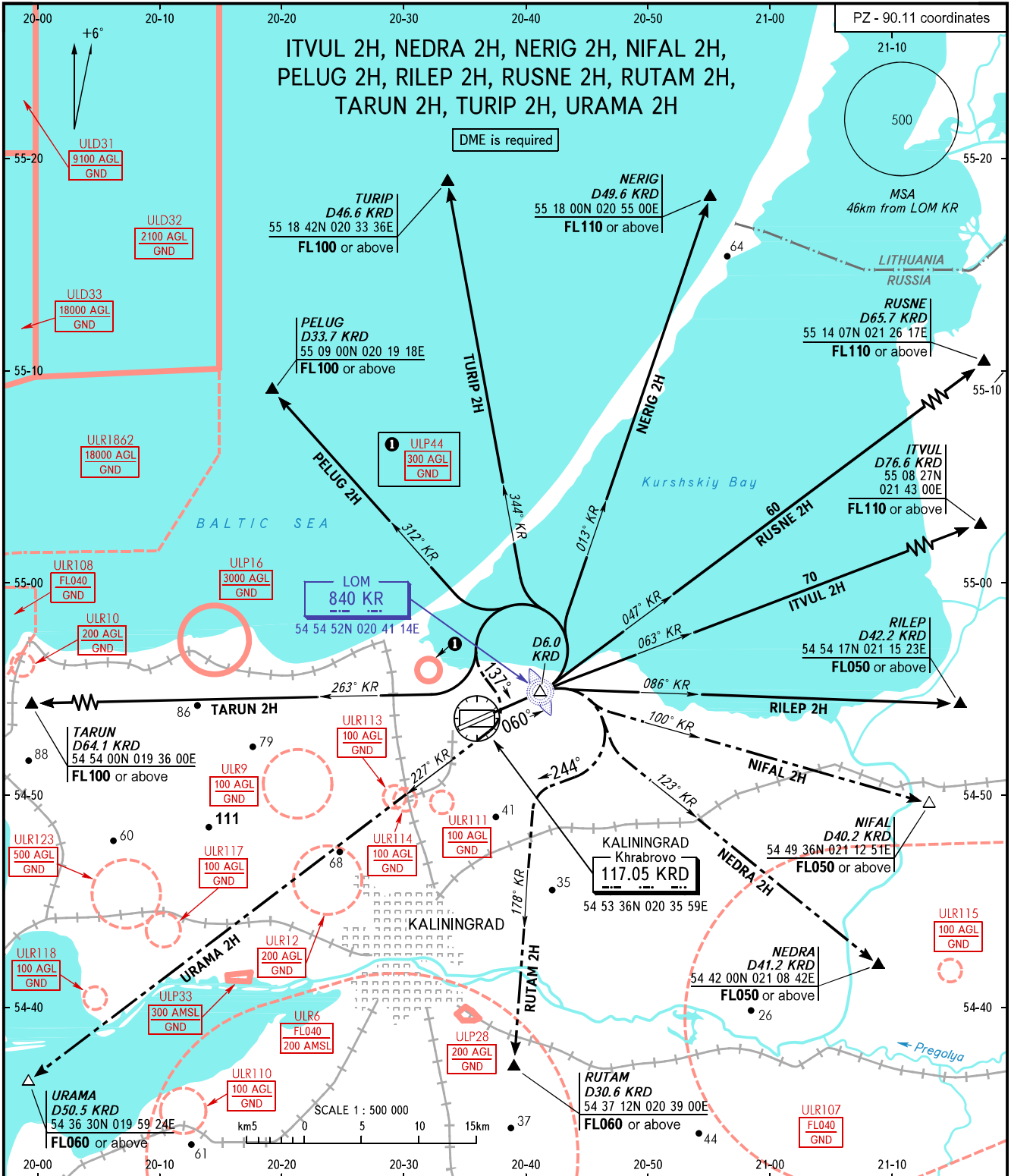
STANDARD DEPARTURE CHART
INSTRUMENT (SID) - ICAO

TRANSITION
HEIGHT : (1000)

KALININGRAD, RUSSIA

KHRABROVO

RWY 06



TOWER 127.200
APPROACH 126.000

- WARNING:**
- The minimum climb gradients are as follows (required due to airspace limitation):
 - **ITVUL 2H** - 4.5% up to FL110;
 - **NEDRA 2H** - 3.5% up to FL050;
 - **NERIG 2H** - 6.7% up to FL110;
 - **NIFAL 2H** - 3.8% up to FL050;
 - **PELUG 2H** - 6.9% up to FL100;
 - **RILEP 2H** - 3.7% up to FL050;
 - **RUSNE 2H** - 5.3% up to FL110;
 - **RUTAM 2H** - 4.3% up to FL060;
 - **TARUN 2H** - 3.6% up to FL100;
 - **TURIP 2H** - 6.0% up to FL100.
 - SID TARUN 2H requires permission to overfly ULP16 and ULR1862 (during activity) or ATS unit coordination.

BEARINGS AND TRACKS ARE MAGNETIC
ALTITUDES, HEIGHTS AND ELEVATIONS ARE IN METRES
DISTANCES ARE IN KILOMETRES

CHANGE: ULR116 withdrawn, ULP44