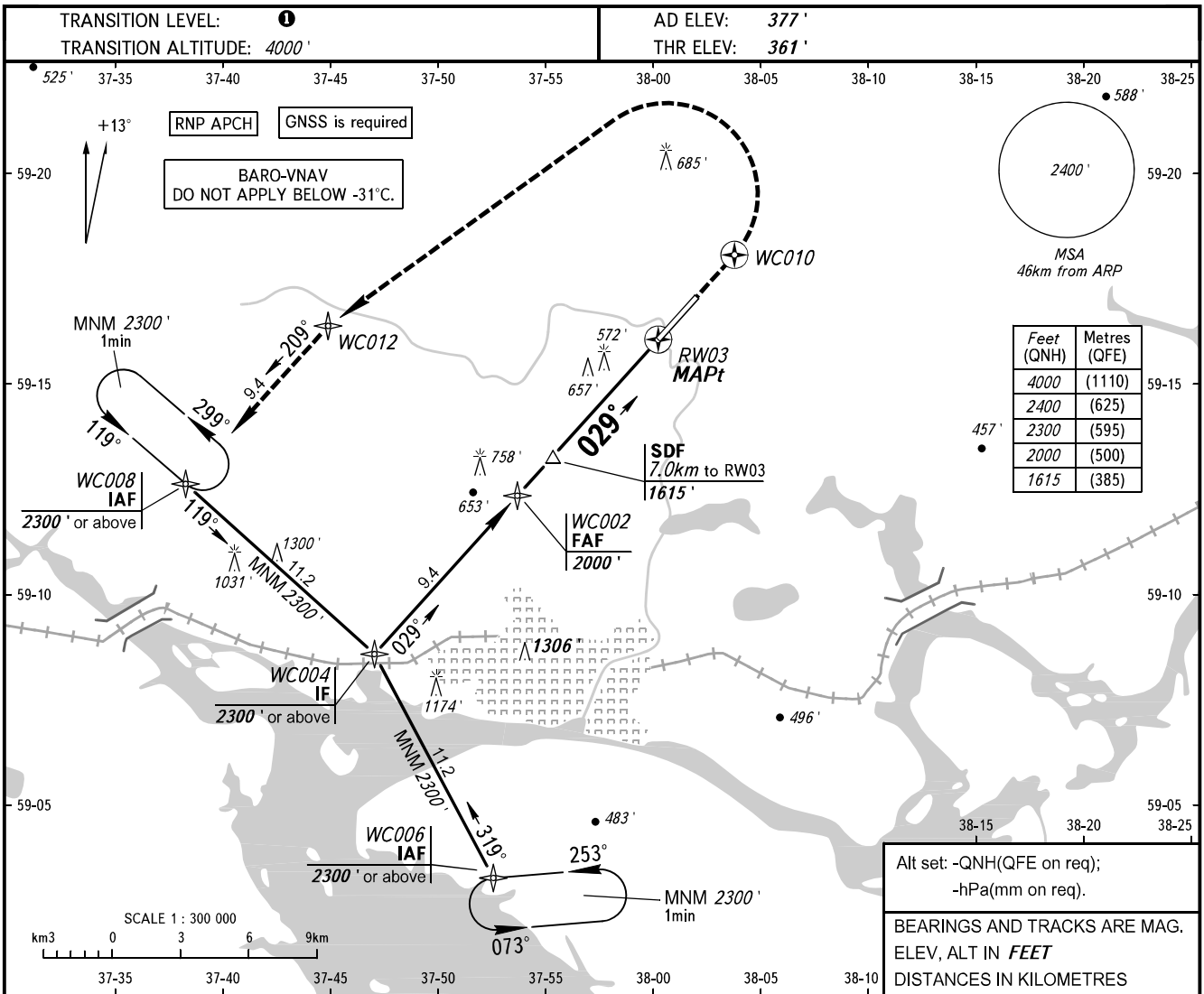


**INSTRUMENT  
APPROACH  
CHART - ICAO**

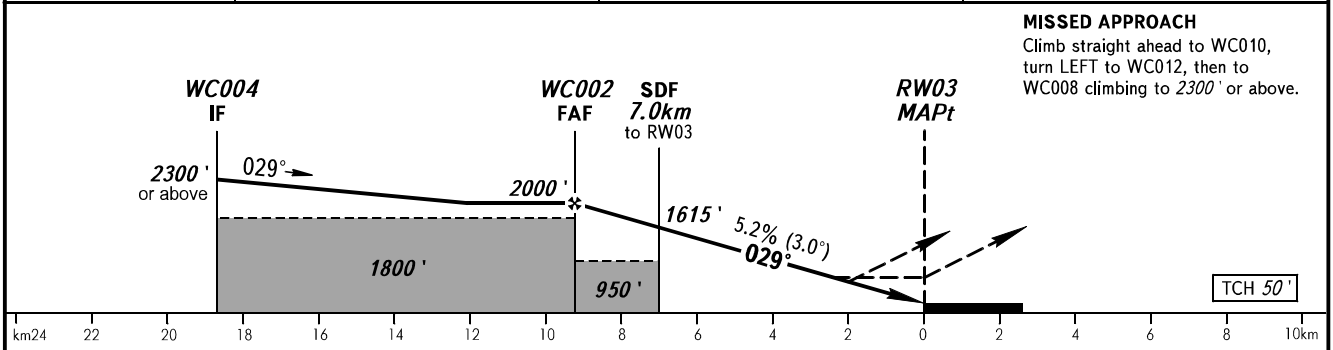
TOWER **119.200**

**CHEREPOVETS, RUSSIA**  
CHEREPOVETS  
RNP RWY 03



Feet (QNH)	Metres (QFE)
4000	(1110)
2400	(625)
2300	(595)
2000	(500)
1615	(385)

DIST to RW03	8.0	6.0	4.0
ALTITUDE	1787'	1443'	1099'



OCA(H)		A	B	C	D	① TRANSITION LEVEL:					
Straight-in Approach	LNAV	820' (460')	820' (460')	820' (460')	820' (460')	- FL050 when QNH is 1013 hPa (760mm mercury column) or above;					
	LNAV/VNAV	710' (350')	720' (360')	730' (370')	740' (380')	- FL060 when QNH is 977 hPa (733mm mercury column) or above, but less than 1013 hPa (760mm mercury column);					
Circling		870' (490')	960' (580')	1080' (710')	1080' (710')	- FL070 when QNH is less than 977 hPa (733mm mercury column).					
GROUND SPEED		km/h	150	180	210	240	270	300	330	360	390
RATE OF DESCENT		m/s	2.2	2.6	3.0	3.5	3.9	4.3	4.8	5.2	5.6
		ft/min	427	512	597	682	768	853	938	1024	1109

CHANGE: New chart