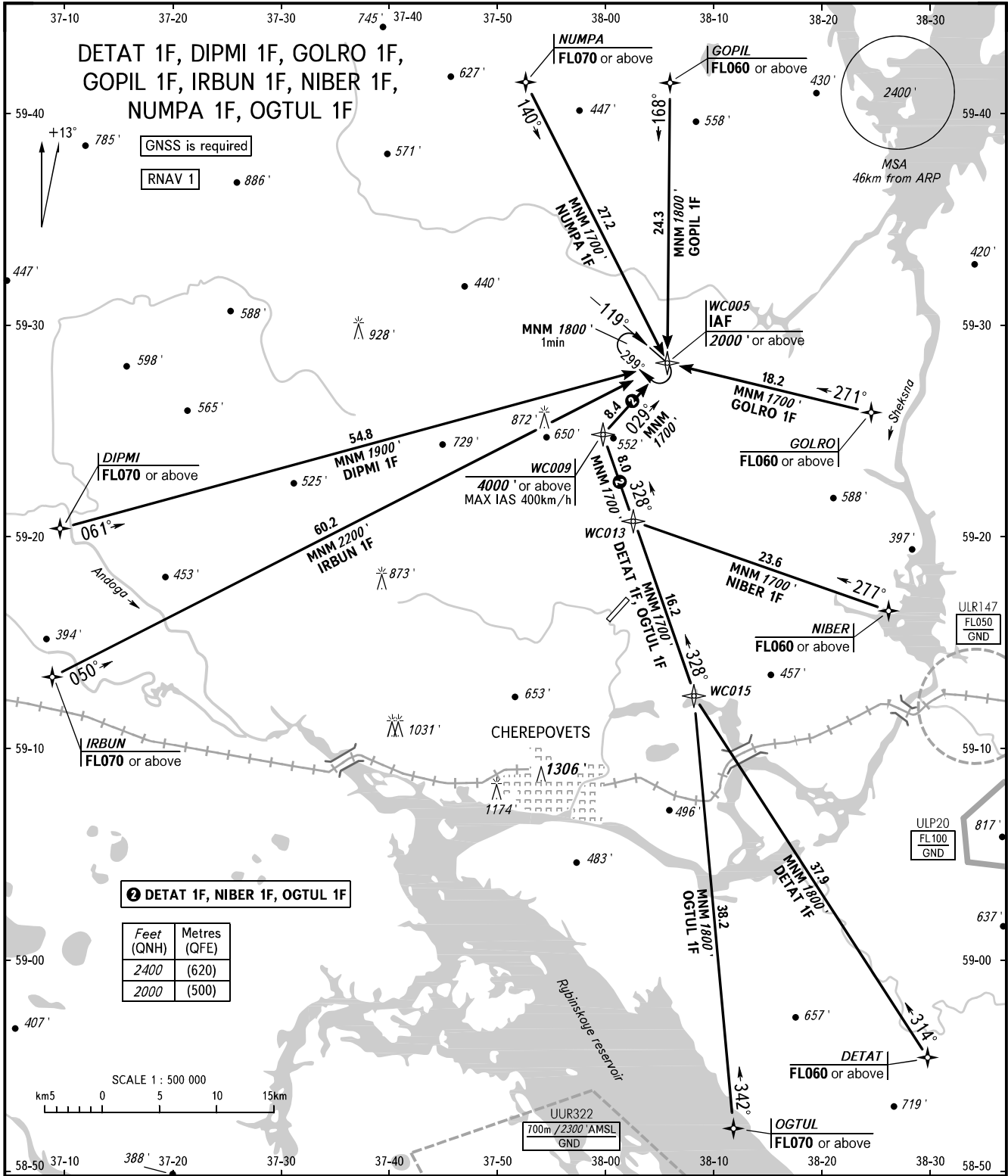


STANDARD ARRIVAL CHART
INSTRUMENT (STAR) - ICAO

CHEREPOVETS, RUSSIA
CHEREPOVETS
RNAV RWY 21

TRANSITION
LEVEL: **1**



2 DETTAT 1F, NIBER 1F, OGTUL 1F

Feet (QNH)	Metres (QFE)
2400	(620)
2000	(500)

TOWER **119.200**

- 1** TRANSITION LEVEL:
- FL050 when QNH is 1013 hPa (760mm mercury column) or above;
 - FL060 when QNH is 977 hPa (733mm mercury column) or above, but less than 1013 hPa (760mm mercury column);
 - FL070 when QNH is less than 977 hPa (733mm mercury column).

BEARINGS AND TRACKS MAGNETIC
ALTITUDES AND ELEVATIONS IN FEET
DISTANCES IN KILOMETRES