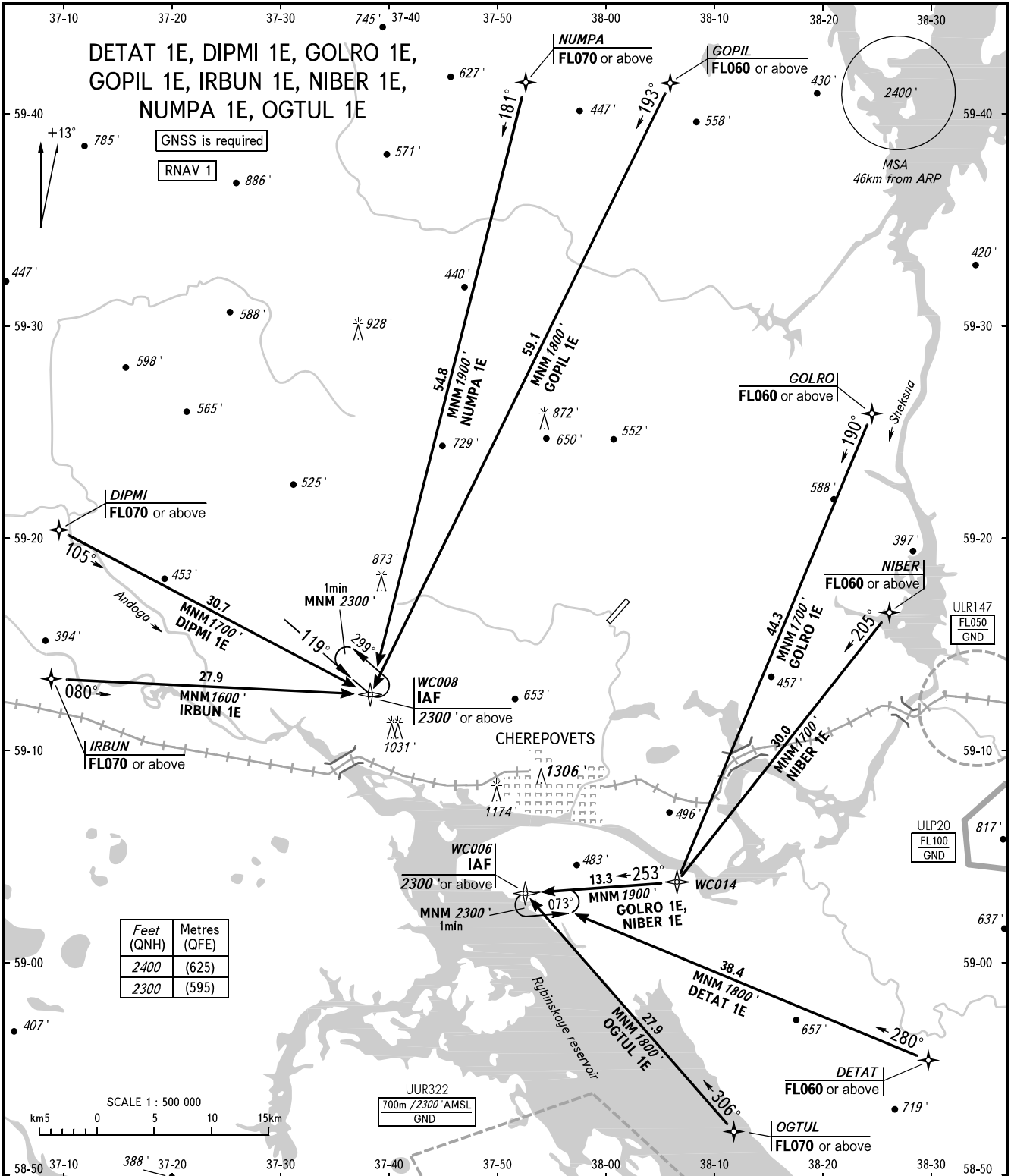


STANDARD ARRIVAL CHART  
INSTRUMENT (STAR) - ICAO

CHEREPOVETS, RUSSIA  
CHEREPOVETS  
RNAV RWY 03

TRANSITION  
LEVEL: **1**



TOWER 119.200

- 1** TRANSITION LEVEL:
- FL050 when QNH is 1013 hPa (760mm mercury column) or above;
  - FL060 when QNH is 977 hPa (733mm mercury column) or above, but less than 1013 hPa (760mm mercury column);
  - FL070 when QNH is less than 977 hPa (733mm mercury column).

BEARINGS AND TRACKS MAGNETIC  
ALTITUDES AND ELEVATIONS IN FEET  
DISTANCES IN KILOMETRES