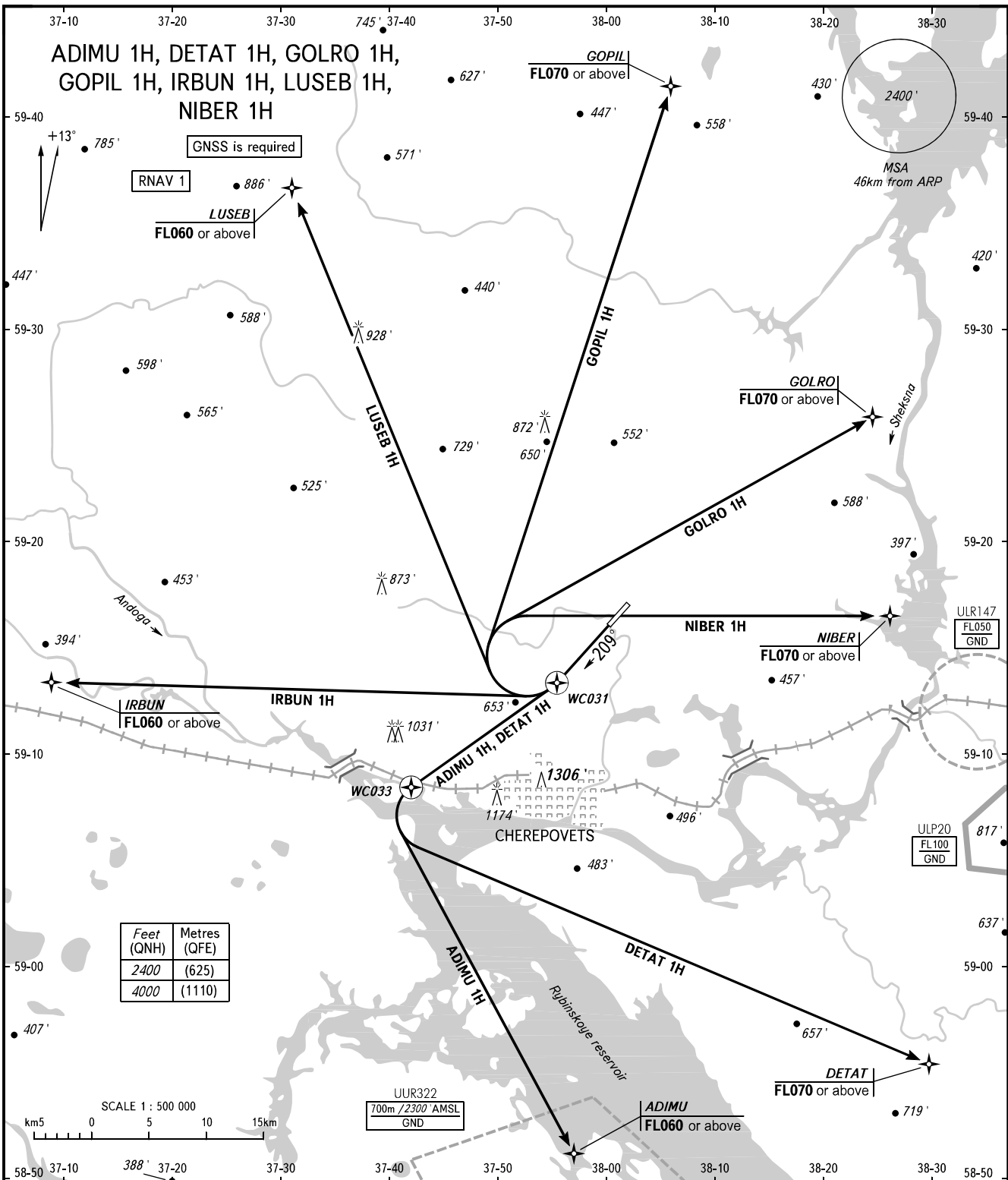


STANDARD DEPARTURE CHART  
INSTRUMENT (SID) - ICAO

TRANSITION  
ALTITUDE : 4000'

CHEREPOVETS, RUSSIA  
CHEREPOVETS  
RNAV RWY 21



**WARNING**  
The minimum climb gradients are as follows  
(required due to the airspace structure):  
- 3.5% up to FL070 for SID GOLRO 1H;  
- 3.8% up to FL070 for SID NIBER 1H,  
or by ATC unit instruction.

BEARINGS AND TRACKS MAGNETIC  
ALTITUDES AND ELEVATIONS IN FEET  
DISTANCES IN KILOMETRES