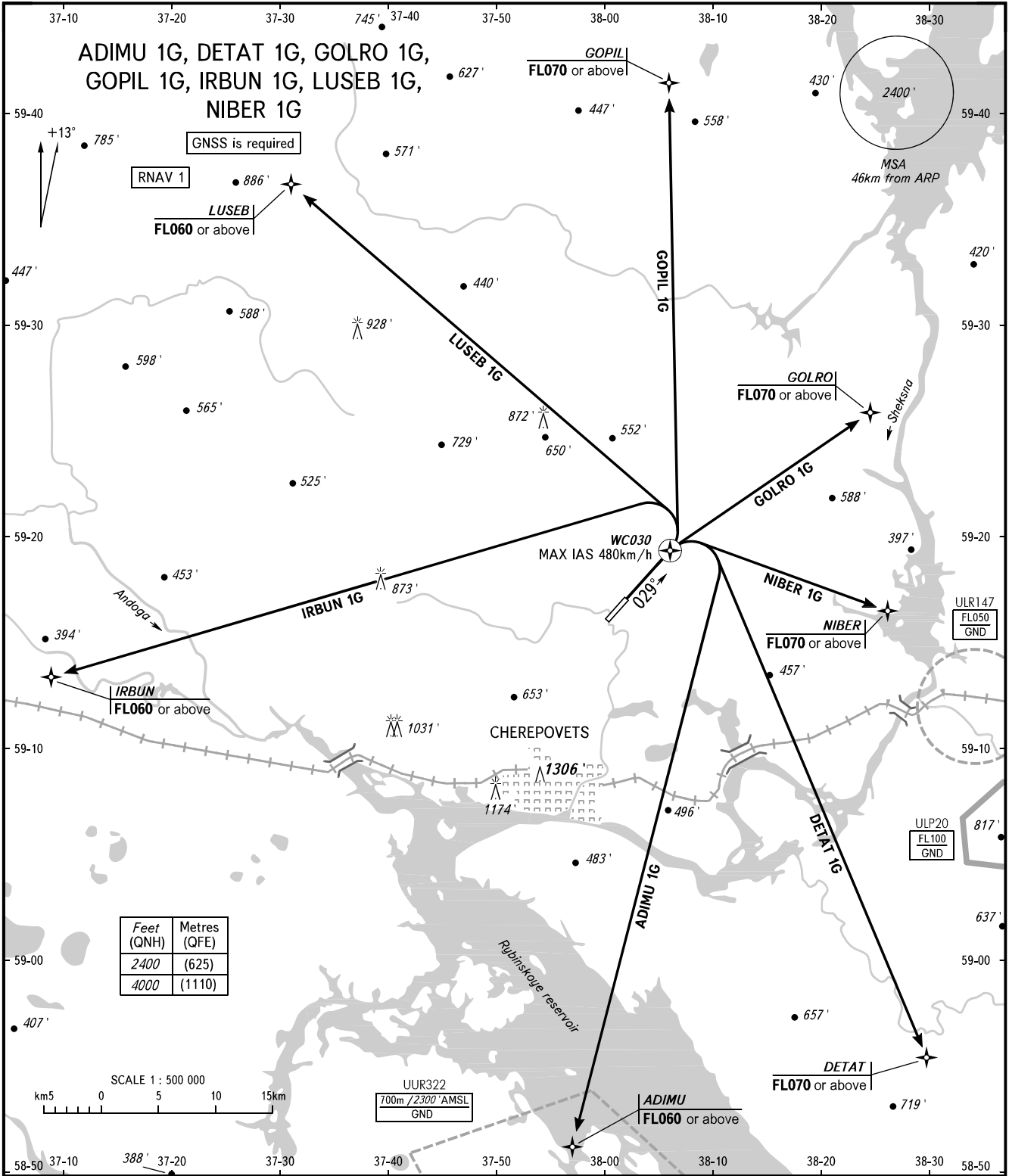


STANDARD DEPARTURE CHART
INSTRUMENT (SID) - ICAO

TRANSITION
ALTITUDE : 4000'

CHEREPOVETS, RUSSIA
CHEREPOVETS
RNAV RWY 03



TOWER 119.200

WARNING

The minimum climb gradients are as follows (required due to the airspace structure):
- 4.4% up to FL070 for SID GOPIL 1G;
- 7.6% up to FL070 for SID GOLRO 1G;
- 7.8% up to FL070 for SID NIBER 1G, or by ATC unit instruction.

BEARINGS AND TRACKS MAGNETIC
ALTITUDES AND ELEVATIONS IN FEET
DISTANCES IN KILOMETRES

CHANGE: New chart