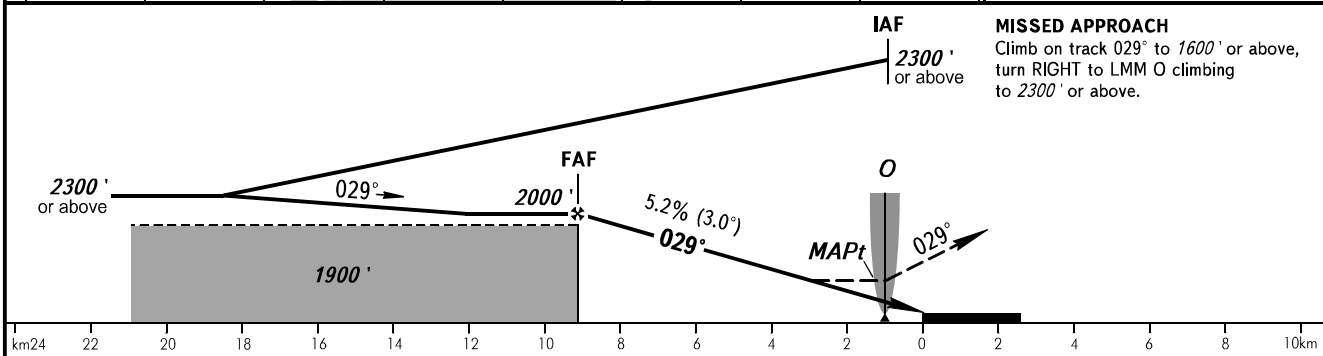
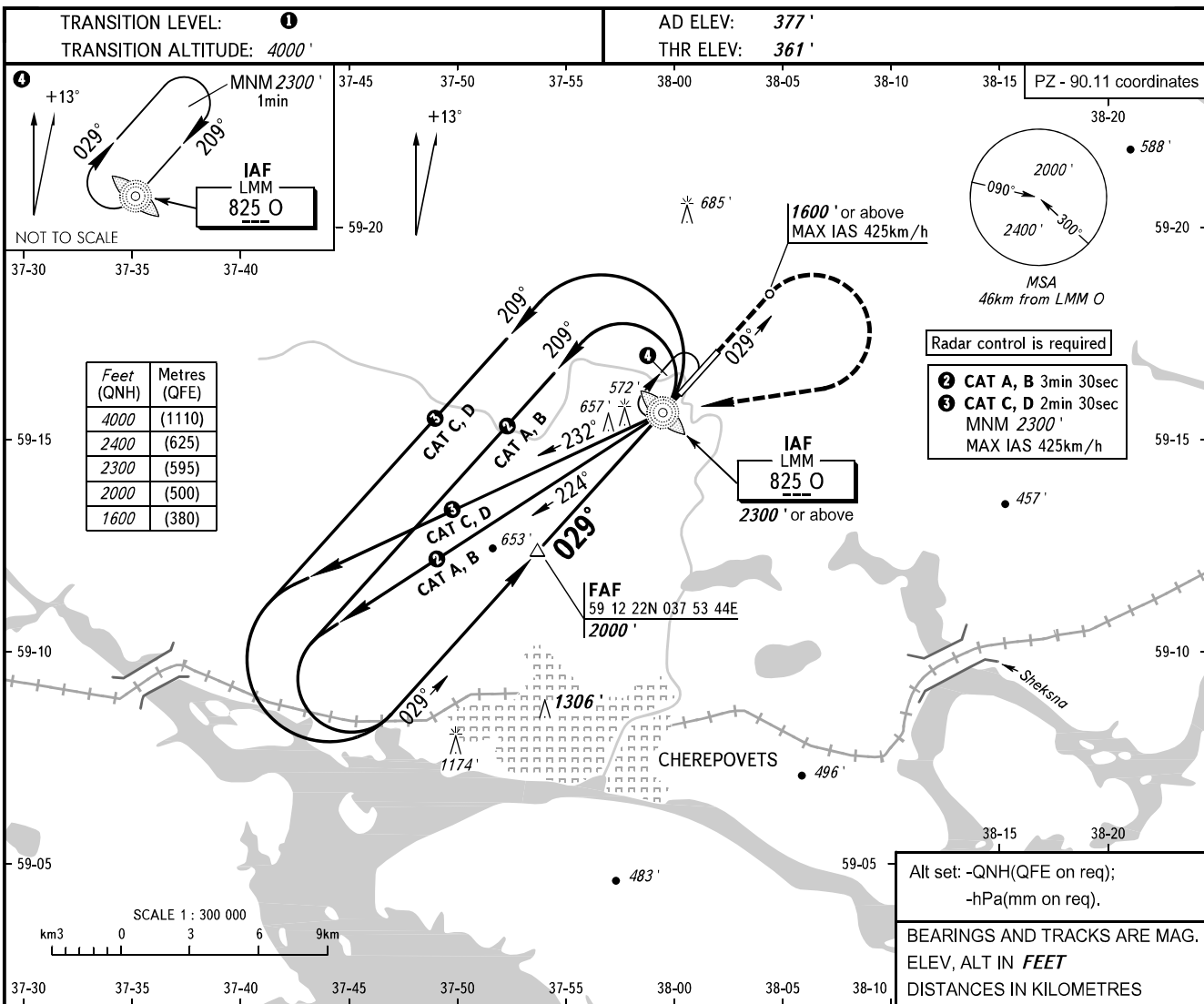


**INSTRUMENT  
APPROACH  
CHART - ICAO**

TOWER **119.200**

**CHEREPOVETS, RUSSIA**  
CHEREPOVETS  
NDB Y RWY 03



| OCA(H)               | A           | B           | C            | D            |     |     |     |     |      |      |
|----------------------|-------------|-------------|--------------|--------------|-----|-----|-----|-----|------|------|
| Straight-in Approach | 910' (550') | 910' (550') | 910' (550')  | 910' (550')  |     |     |     |     |      |      |
| Circling             | 910' (550') | 960' (580') | 1080' (710') | 1080' (710') |     |     |     |     |      |      |
| GROUND SPEED         | km/h        | 150         | 180          | 210          | 240 | 270 | 300 | 330 | 360  | 390  |
| RATE OF DESCENT      | m/s         | 2.2         | 2.6          | 3.0          | 3.5 | 3.9 | 4.3 | 4.8 | 5.2  | 5.6  |
|                      | ft/min      | 427         | 512          | 597          | 682 | 768 | 853 | 938 | 1024 | 1109 |

**1** TRANSITION LEVEL:  
 - FL050 when QNH is 1013 hPa (760mm mercury column) or above;  
 - FL060 when QNH is 977 hPa (733mm mercury column) or above, but less than 1013 hPa (760mm mercury column);  
 - FL070 when QNH is less than 977 hPa (733mm mercury column);

**WARNING:**  
 1. MAPt at LMM O.  
 2. Turn before MAPt is PROHIBITED.  
 3. Timing for defining MAPt is not authorized.

CHANGE: New chart