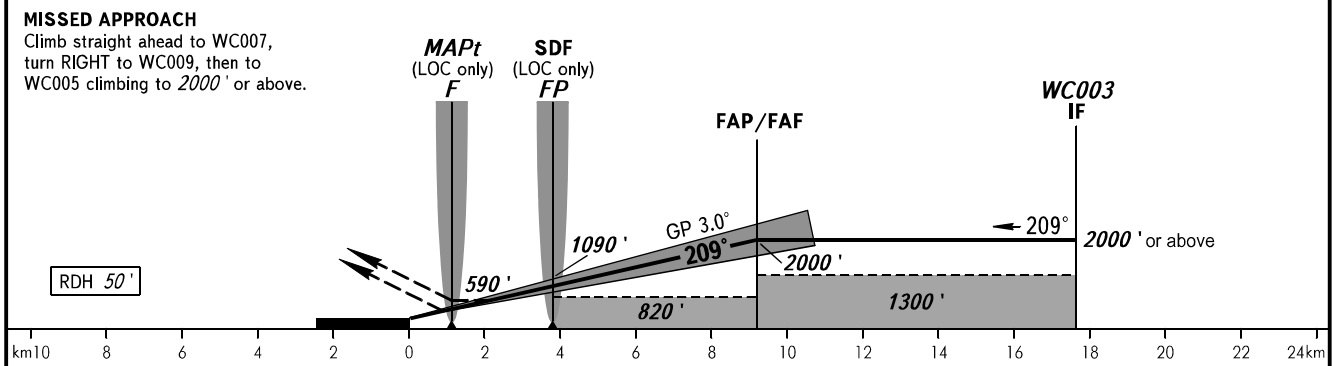
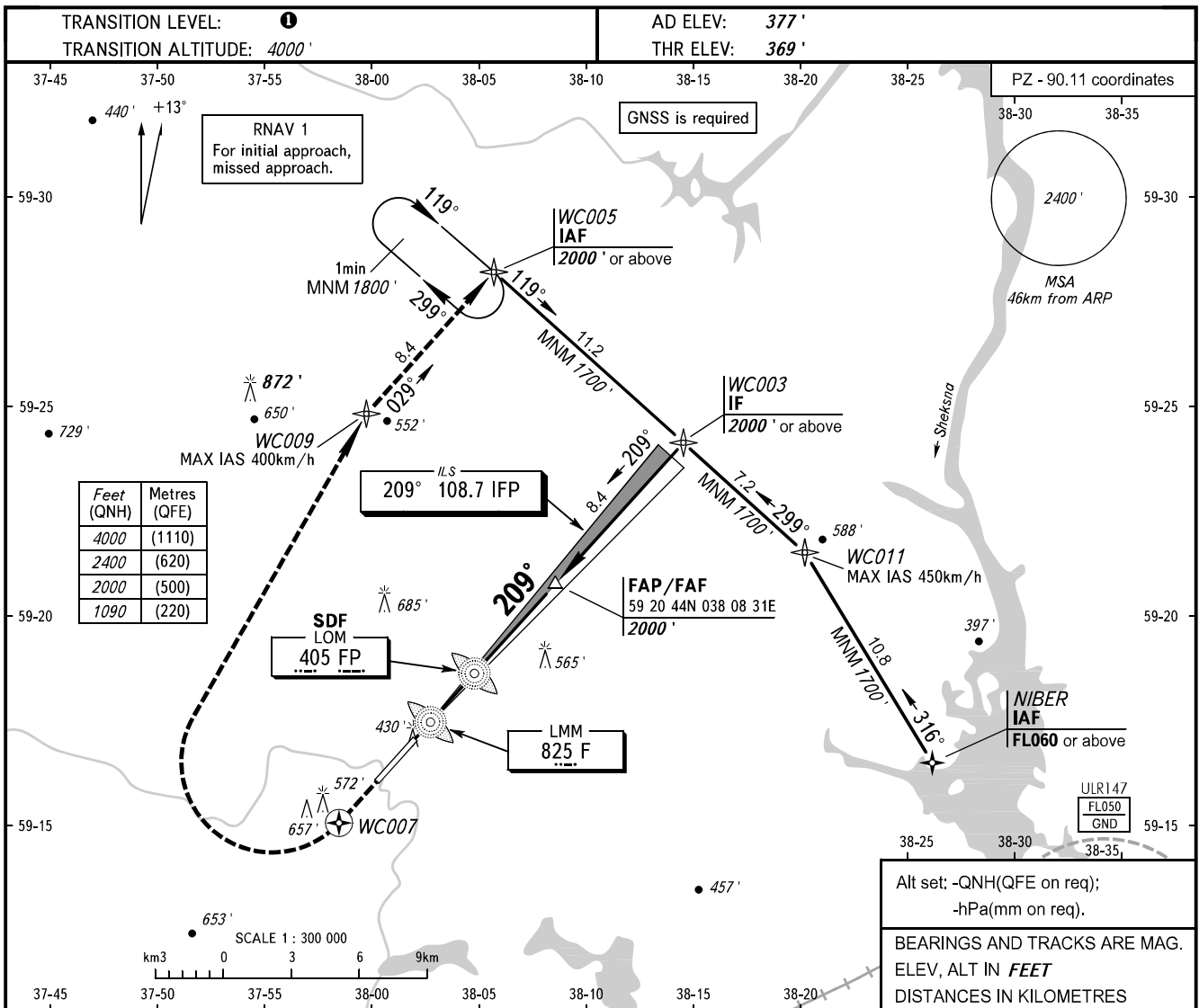


INSTRUMENT
APPROACH
CHART - ICAO

TOWER 119.200

CHEREPOVETS, RUSSIA
CHEREPOVETS
ILS Z CAT I, LOC Z RWY 21



OCA(H)		A	B	C	D						
Straight-in Approach	CAT I	536' (167')	548' (179')	556' (187')	567' (198')						
	LOC	With SDF	780' (400')	780' (400')	780' (400')	780' (400')					
		WO SDF	820' (440')	820' (440')	820' (440')	820' (440')					
Circling		870' (490')	960' (580')	1080' (710')	1080' (710')						
GROUND SPEED		km/h	150	180	210	240	270	300	330	360	390
RATE OF DESCENT		m/s	2.2	2.6	3.0	3.5	3.9	4.3	4.8	5.2	5.6
		ft/min	427	512	597	682	768	853	938	1024	1109

1 TRANSITION LEVEL:
 - FL050 when QNH is 1013 hPa (760mm mercury column) or above;
 - FL060 when QNH is 977 hPa (733mm mercury column) or above, but less than 1013 hPa (760mm mercury column);
 - FL070 when QNH is less than 977 hPa (733mm mercury column).

WARNING:
 1. MAPt at LMM F (LOC).
 2. Timing for defining MAPt is not authorized.

CHANGE: New chart