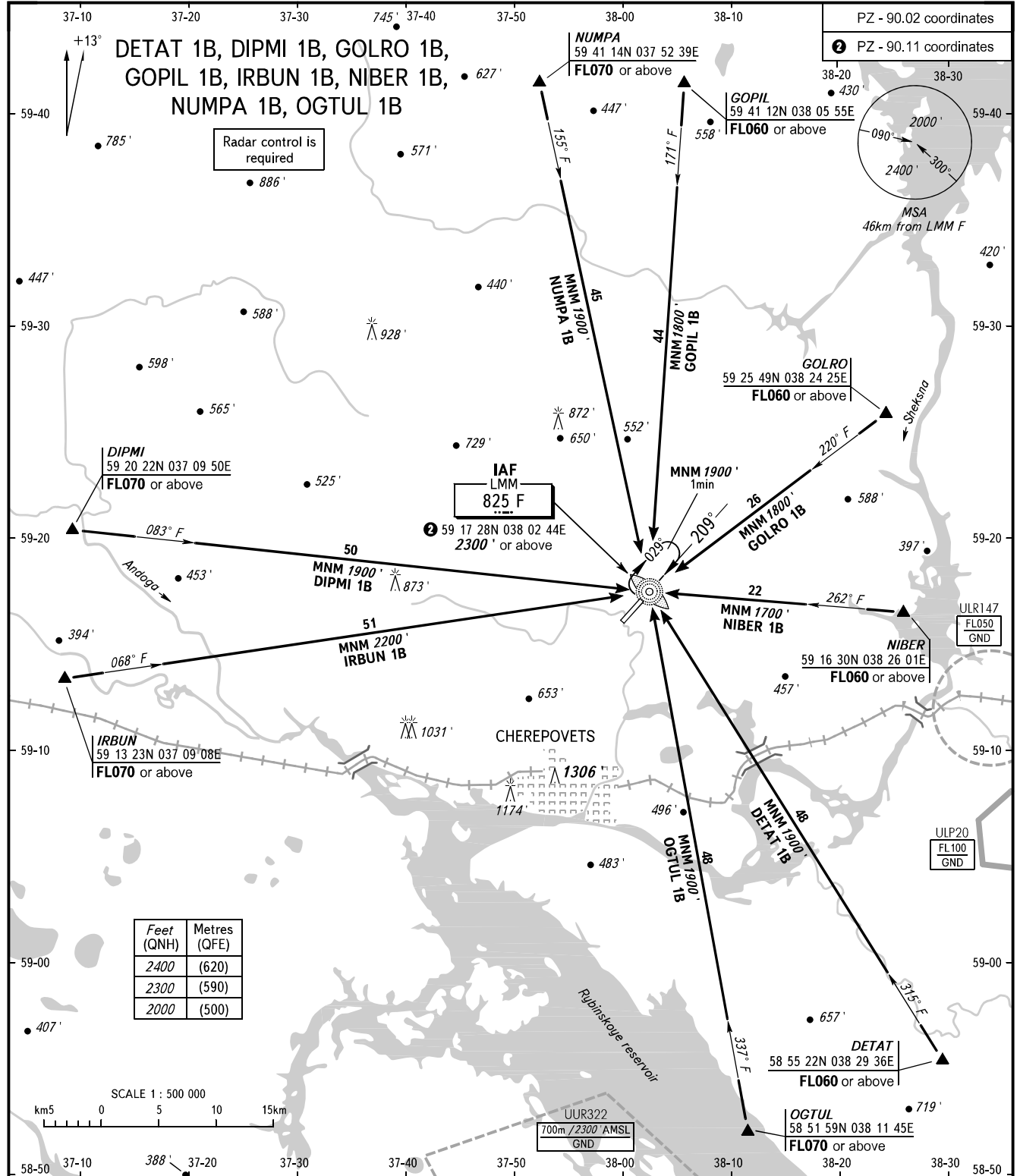


STANDARD ARRIVAL CHART
INSTRUMENT (STAR) - ICAO

CHEREPOVETS, RUSSIA
CHEREPOVETS
RWY 21

TRANSITION
LEVEL: **1**



TOWER 119.200

1 TRANSITION LEVEL:

- FL050 when QNH is 1013 hPa (760mm mercury column) or above;
- FL060 when QNH is 977 hPa (733mm mercury column) or above, but less than 1013 hPa (760mm mercury column);
- FL070 when QNH is less than 977 hPa (733mm mercury column).

BEARINGS AND TRACKS MAGNETIC
ALTITUDES AND ELEVATIONS IN FEET
DISTANCES IN KILOMETRES