

STANDARD ARRIVAL CHART
INSTRUMENT (STAR) - ICAO

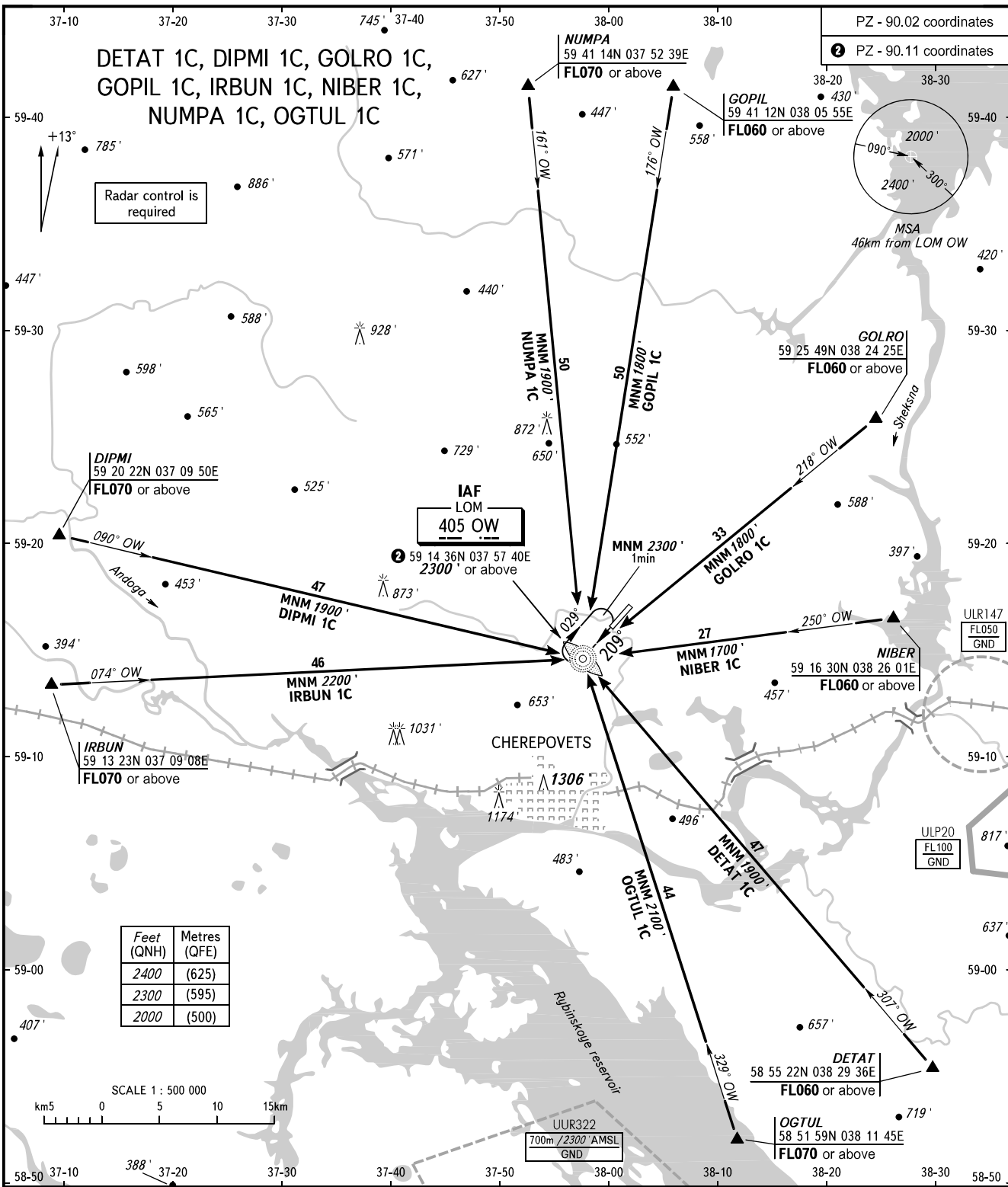
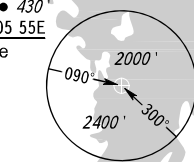
CHEREPOVETS, RUSSIA
CHEREPOVETS
RWY 03

TRANSITION
LEVEL: **1**

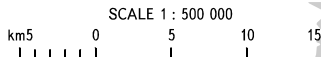
PZ - 90.02 coordinates
2 PZ - 90.11 coordinates

DETAT 1C, DIPMI 1C, GOLRO 1C,
GOPIL 1C, IRBUN 1C, NIBER 1C,
NUMPA 1C, OGTUL 1C

Radar control is
required



Feet (QNH)	Metres (QFE)
2400	(625)
2300	(595)
2000	(500)



TOWER **119.200**

- 1** TRANSITION LEVEL:
- FL050 when QNH is 1013 hPa (760mm mercury column) or above;
 - FL060 when QNH is 977 hPa (733mm mercury column) or above, but less than 1013 hPa (760mm mercury column);
 - FL070 when QNH is less than 977 hPa (733mm mercury column).

BEARINGS AND TRACKS MAGNETIC
ALTITUDES AND ELEVATIONS IN FEET
DISTANCES IN KILOMETRES

CHANGE: New chart